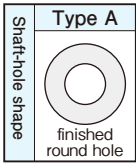


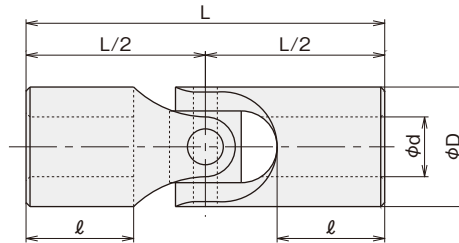
Anti-corrosive Type MS, MSS

Stainless Steel
SUS304, SUS316

Max. joint angle	Additional machining	Product with shaft
up to 30°	possible	refer to page 35



- ① in water or in water and air alternately
- ② in acidic liquid
- ③ in alkaline liquid
- ④ for anti-corrosive and heat-resistant use



■ Type MS, MSS Dimension Table

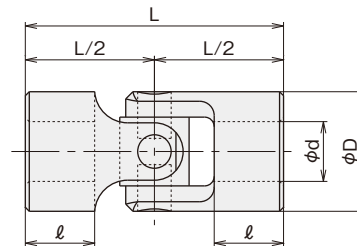
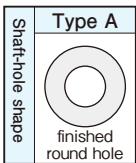
Size		Symbol	ϕd^{H7}	ϕD	L	l	Swing of the center	Mass g	Max. revolution min^{-1}	Max. transmission torque capacity N·m
SUS304	SUS316									
MS-2.0	MSS-2.0		2	6	15	4	0.10	2.5	600	0.3
MS-2.5	MSS-2.5		2.5	6	15	4	0.10	2.5	600	0.3
MS-3.0	MSS-3.0		3	6	18	5.5	0.10	2.5	600	0.3
MS-3.5	MSS-3.5		3.5	6	18	5.5	0.10	2.5	600	0.3
MS-4.0	MSS-4.0		4	8	24	7.2	0.15	6.5	400	0.7
MS-4.5	MSS-4.5		4.5	8	24	7.2	0.15	5.5	400	0.7
MS-5.0	MSS-5.0		5	10	30	9	0.15	12.5	300	1.6
MS-5.5	MSS-5.5		5.5	10	30	9	0.15	11.5	300	1.6

Non-magnetic, Anti-corrosive Type BR

Bronze BC6

Max. joint angle	Additional machining
up to 30°	possible

- It has excellent non-magnetic and anti-corrosive characteristics.



■ Type BR Dimension Table

Symbol	ϕd^{H7}	ϕD	L	l	Swing of the center	Mass kg	Max. transmission torque capacity N·m
Size							
BR- 6	6	16	40	11	0.10	0.05	4
BR- 8	8	16	40	11	0.10	0.05	4
BR-10	10	25	50	13	0.14	0.16	15
BR-12	12	25	50	13	0.14	0.15	15
BR-14	14	32	65	18	0.14	0.34	29
BR-16	16	32	65	18	0.14	0.32	29
BR-20	20	40	82	23	0.20	0.63	59
BR-22	22	50	108	29	0.25	1.34	108
BR-25	25	50	108	29	0.25	1.30	108