

# Anti-corrosive Type HS, BS, HSS

Stainless Steel  
SUS304, SUS316

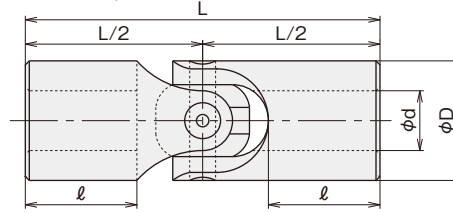
● Please read "request and advice for order" in page 6 before placing an order.

Max. joint angle	Additional machining	Product with shaft
up to 30°	possible	refer to page 33

Shaft-hole shape	Type A	Type B	Type T	Type F	Type Q
	finished round hole	hole with key way	hole with key way and tap	solid	can be disassembled

- Dry lubrication treatment is carried out in order to increase the anti-wear characteristics. (over HS-16)
- A hole for a spring-pin and a taper-pin attached should be machined together with a shaft at a location of  $l/2$ .
- Designate new JIS or old JIS for key, when the type of shaft-hole shape is B or T.
- A spring-pin is not attached for a joint with a key way.

- ① in water or in water and air alternately ② in acidic liquid  
③ in alkaline liquid ④ for anti-corrosive and heat-resistant use



Attachment ● spring-pin 2 pieces (SUS420J2)

● taper-pin 2 pieces for sizes larger than BS-40 (SUS303)

■ Type HS, BS, HSS Dimension Table

Size	Symbol	$\phi d^{H7}$	$\phi D$	L	$l$	New JIS key		Old JIS key		TAP M	Dimension of spring-pin for fixing	Swing of the center	Mass kg	Max. revolution $\text{min}^{-1}$	Max. transmission torque capacity $\text{N}\cdot\text{m}$
						$a^{js9}$	b	$a^{js9}$	b						
HS- 6	HSS- 6	6	12.5	40	13	2	1.0	2	1.0	M 3	2 × 12	0.10	0.03	800	3
HS- 8	HSS- 8	8	16	50	16.5	3	1.4	3	1.5	M 3	2.5 × 16	0.10	0.05	720	9
HS-10	HSS-10	10	20	56	17	3	1.4	4	1.5	M 4	3 × 20	0.10	0.09	580	15
HS-12	HSS-12	12	25	71	22	4	1.8	4	1.5	M 4	4 × 25	0.10	0.19	480	26
HS-14		14	25	71	22	5	2.3	5	2.0	M 5	4 × 25	0.10	0.17	480	26
HS-16		16	32	80	23	5	2.3	5	2.0	M 5	5 × 32	0.10	0.35	360	62
HS-20		20	40	100	28	6	2.8	5	2.0	M 6	6 × 40	0.10	0.69	290	118
HS-25		25	50	126	36	8	3.3	7	3.0	M 8	8 × 50	0.10	1.37	230	226
BS-30		30	60	178	56	8	3.3	7	3.0	M 8	10 × 60	0.25	2.82	190	353
BS-40		40	80	228	70	12	3.3	10	3.5	M10	10 × 80	0.25	6.50	140	843
BS-50		50	100	270	80	14	3.8	12	3.5	M12	12 × 100	0.25	11.70	110	1667
BS-60		60	120	300	84	18	4.4	15	5.0	M12	13 × 120	0.25	19.10	90	2844

# Anti-corrosive Type HSD, BSD

Stainless Steel  
SUS304

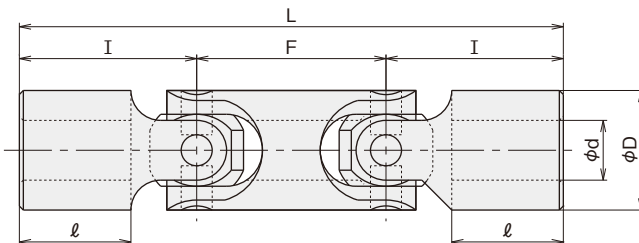
● Please read "request and advice for order" in page 6 before placing an order.

Max. joint angle	Additional machining
up to 60°	possible

Shaft-hole shape	Type A	Type B	Type T	Type F	Type Q
	finished round hole	hole with key way	hole with key way and tap	solid	can be disassembled

- Dry lubrication treatment is carried out to improve the anti-wear characteristics. (over HSD-16)
- A hole for a spring-pin and a taper-pin attached should be machined together with a shaft at a location of  $l/2$ .
- Designate new JIS or old JIS for key, when the type of shaft-hole shape is B or T.
- A spring-pin is not attached for a joint with a key way.

- ① in water or in water and air alternately ② in acidic liquid  
③ in alkaline liquid ④ for anti-corrosive and heat-resistant use



■ Type HSD, BSD Dimension Table

Attachment ● spring-pin 2 pieces (SUS420J2)

Size	Symbol	$\phi d^{H7}$	$\phi D$	L	$l$	I	F	New JIS key		Old JIS key		TAP M	Dimension of spring-pin for fixing	Swing of the center	Mass kg	Max. revolution $\text{min}^{-1}$	Max. transmission torque capacity $\text{N}\cdot\text{m}$
								$a^{js9}$	b	$a^{js9}$	b						
HSD- 6		6	12.5	65	13	20	25	2	1.0	2	1.0	M3	2 × 12	0.10	0.04	640	2
HSD- 8		8	16	80	16.5	25	30	3	1.4	3	1.5	M3	2.5 × 16	0.10	0.08	570	7
HSD-10		10	20	90	17	28	34	3	1.4	4	1.5	M4	3 × 20	0.14	0.15	460	12
HSD-12		12	25	112	22	35.5	41	4	1.8	4	1.5	M4	4 × 25	0.14	0.31	380	20
HSD-14		14	25	112	22	35.5	41	5	2.3	5	2.0	M5	4 × 25	0.14	0.29	380	20
HSD-16		16	32	134	23	40	54	5	2.3	5	2.0	M5	5 × 32	0.14	0.58	280	49
HSD-20		20	40	164	28	50	64	6	2.8	5	2.0	M6	6 × 40	0.20	1.11	230	93
HSD-25		25	50	206	36	63	80	8	3.3	7	3.0	M8	8 × 50	0.20	2.20	180	180
BSD-30		30	60	275	56	89	97	8	3.3	7	3.0	M8	10 × 60	0.25	4.12	150	282