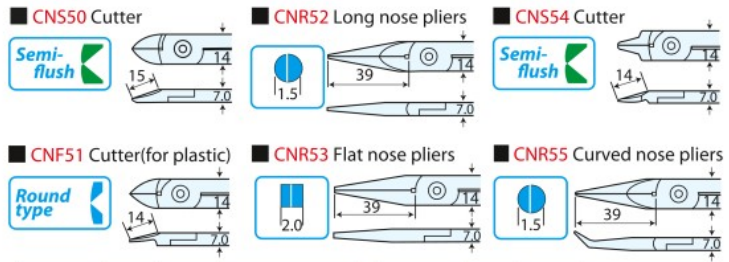


OTHERS

CASSETTE PLIERS

Blades can be easily replaced.
Blade opening is adjustable.

Setting precise & small parts
Cutting fine wires
Assembling plastic hobby models
Repairing appliances



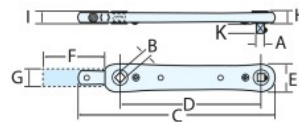
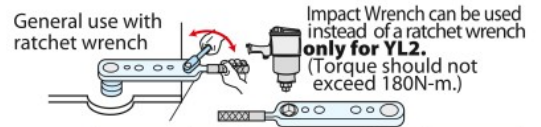
Model	Weight (g)	Blade	Cutting capacity (φmm)	Model	Weight (g)	Blade	Cutting capacity (φmm)
CNS-50	105	CNS50	copper 1.0 steel 0.5	CNS-53	110	CNR53	—
CNS-51	105	CNF51	plastic(only) 2.0	CNS-54	105	CNS54	copper 1.0 steel 0.5
CNS-52	110	CNR52	—	CNS-55	110	CNR55	—

BARRIER WRENCHES

The unique "MERRY" Barrier Wrenches have solved the problem of difficult bolt/nut fastening and loosening jobs in narrow and hard-to-reach places.

AN EXAMPLE OF APPLICATION

Barrier Wrenches offer safe and smooth service for replacement or adjustment of the cultivator blades in narrow space.



Model	Square size A×B	Weight (g)	Max. allowable torque(N·m)
YL1A	□ 9.5□ × □ 9.5□	820	94
YL2	□ 12.7□ × □ 12.7□	1,330	196

Model	Dimensions(mm)							
	C	D	E	F	G	H	I	K
YL1A	300	217	39	150	φ20	18	22	10
YL2	327	228	49	210	φ26	20	25	14

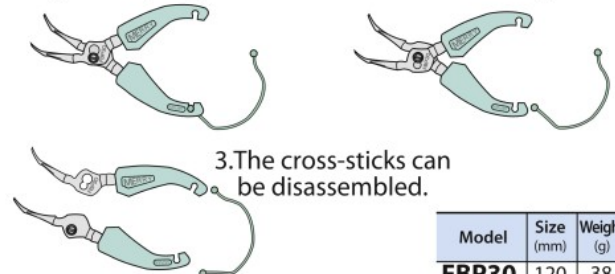
FBP30

Fish boning pliers



HOW TO DISASSEMBLE THE CROSS-STICKS

1. Disconnect either end of the plastic spring.
2. Shift the joint-Screw from small hole to large one.



Model	Size (mm)	Weight (g)
FBP30	120	38

HN22

Precision palm pliers



〈Stainless steel〉 Needle-nose pliers with a curved palm grip

Perfect for removing bones in fish processing factories.

Model	Size (mm)	Weight (g)
HN22	105	41

SPRINGS FOR MERRY NIPPERS AND CUTTERS

Model	Order Quantity	Adaptable Type
MBN-01	10P	55S-120, 160S-125, 02, 09, M11, M12, M14, etc
MBN-02	10P	55S-150, 160S-150, 66S, CT55-150, etc
MBN-03	10P	99-175/200, 206S-175/200, etc
MBN-04	10P	01, 03, 04, 05, 06, 07, 08
MBN-05	10P	L30, L40, HT160, 170S, etc
MBN-06	10P	105-150, 23EF, 25EF, 26EF

Model	Order Quantity	Adaptable Type
MBN-07	10P	99-150, 206S-150, HT120, HT130, HT140
MBN-08	10P	HT180
MBN-09	10P	HT200
MBN-10	5P	PIP19
MBN-11	5P	SX5
MBN-12	5P	SX10, SX15