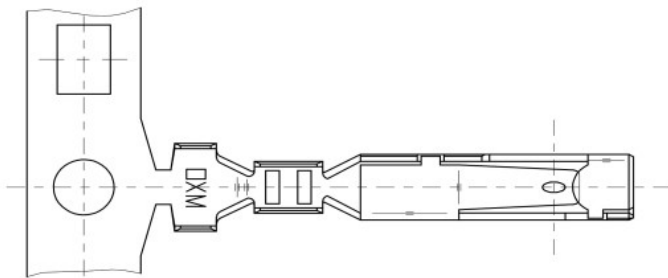
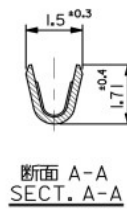
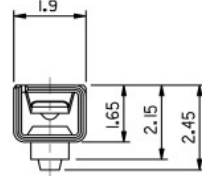
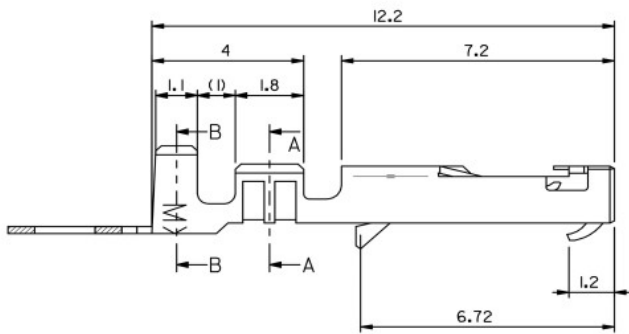


10 9 8 7 6 5 4 3 2 1

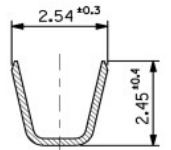


注記
NOTES

- 適合ハウジング : 51111 シリーズ
APPLICABLE HOUSING : 51111 SERIES
- 材料 MATERIAL
りん青銅 (± 0.2)
PHOSPHOR BRONZE
錫メッキ 0.9 μm 以上 リフロー処理 (前めっき)
TIN 0.9 μm MIN. REFLOW TREATMENT (PRE-PLATED)
- 適用電線サイズAWG #22-28
被覆外径 : 1.15~1.8mm
- ELV及びRoHS適合品
ELV AND RoHS COMPLIANT



断面 A-A
SECT. A-A



断面 B-B
SECT. B-B

PLASTIC BAG	50397-8100	バラ状 LOOSE
REEL	50397-8000	連鎖状 CHAIN
PACKAGING SPEC.	オーダー番号 ORDER NO.	形態 FORM

CONNECTOR SERIES NO. 50397-8400

RELEASED EC NO. J2010-1818 DRAWN NYOSHIKAWA 2010/03/10 CHECKED BY CHIKAKASAWA 2010/03/10 APPROVED BY NUKITA 2010/03/11	GENERAL TOLERANCES (UNLESS SPECIFIED)	DIMENSION STYLE MM ONLY	SCALE ---	DESIGN UNITS METRIC	THIRD ANGLE PROJECTION
	10 UNDER ± 0.2	DRAWN BY NYOSHIKAWA DATE 2010/03/10	TITLE 2.5 WIRE TO WIRE CONN. CRIMP RECEPTACLE		
	10 OVER 30 UNDER ± 0.25	CHECKED BY KASAKAWA DATE 2010/03/10	MOLEX INCORPORATED		
	30 OVER ± 0.3	APPROVED BY NUKITA DATE 2010/03/10	DOCUMENT NO. SD-50397-001		
ANGULAR $\pm 3^\circ$	DRAFT WHERE APPLICABLE MUST REMAIN WITHIN DIMENSIONS	MATERIAL NO. SEE TABLE	SHEET NO. 1 OF 1		
THIS DRAWING CONTAINS INFORMATION THAT IS PROPRIETARY TO MOLEX INCORPORATED AND SHOULD NOT BE USED WITHOUT WRITTEN PERMISSION					