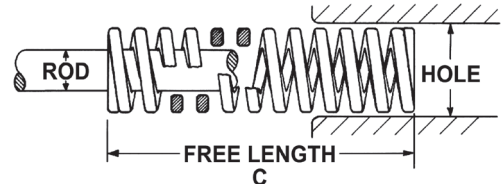
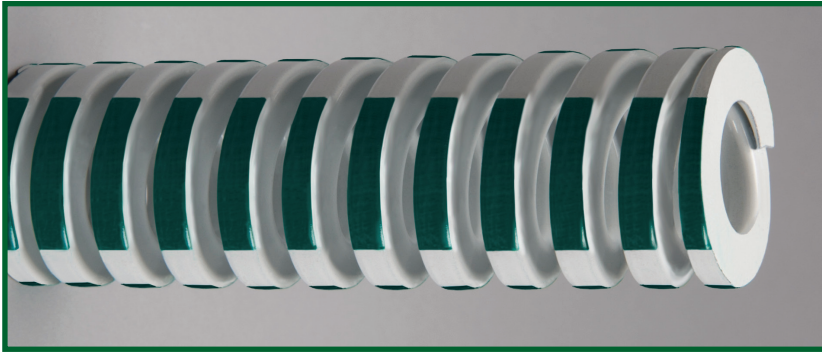


# EXTRA HEAVY DUTY DIE SPRINGS

COLOR CODED GREEN STRIPE



Hole Diam. (in)	Rod Diam. (in)	Free Length (in)	Wire Size (in)	CATALOG NUMBER	Pounds @ 1/10 inch defl.	Total Deflection Recommended for Long Life (15% of C)		Total Deflection Recommended for Avg. Life (17% of C)		Maximum Operating Deflection (25% of C)		* Max. Comp. Length (in)
						Load lbs.	Defl. in.	Load lbs.	Defl. in.	Load lbs.	Defl. in.	
3/8	3/16	1.00	0.063 X 0.073	9-0604-4	20.5	30.8	0.15	34.9	0.17	51.3	0.25	0.67
		1.25		9-0605-4	16.0	30.0	0.19	34.0	0.21	50.0	0.31	0.86
		1.50		9-0606-4	12.5	28.1	0.23	31.9	0.26	46.9	0.38	1.03
		1.75		9-0607-4	11.1	29.1	0.26	33.0	0.30	48.6	0.44	1.22
		2.00		9-0608-4	9.0	27.0	0.30	30.6	0.34	45.0	0.50	1.38
		2.50		9-0610-4	7.0	26.3	0.38	29.8	0.43	43.8	0.63	1.71
		3.00		9-0612-4	6.3	28.4	0.45	32.1	0.51	47.3	0.75	2.05
		12.00		9-0648-4	1.5	27.0	1.80	30.6	2.04	45.0	3.00	7.98
1/2	9/32	1.00	0.088 X 0.090	9-0804-4	32.0	48.0	0.15	54.4	0.17	80.0	0.25	0.69
		1.25		9-0805-4	24.2	45.4	0.19	51.4	0.21	75.6	0.31	0.86
		1.50		9-0806-4	20.0	45.0	0.23	51.0	0.26	75.0	0.38	1.03
		1.75		9-0807-4	17.0	44.6	0.26	50.6	0.30	74.4	0.44	1.20
		2.00		9-0808-4	14.5	43.5	0.30	49.3	0.34	72.5	0.50	1.36
		2.50		9-0810-4	11.5	43.1	0.38	48.9	0.43	71.9	0.63	1.65
		3.00		9-0812-4	9.4	42.3	0.45	47.9	0.51	70.5	0.75	1.99
		12.00		9-0814-4	8.0	42.0	0.53	47.6	0.60	70.0	0.88	2.30
5/8	11/32	1.00	0.115 X 0.120	9-1004-4	63.0	94.5	0.15	107.1	0.17	157.5	0.25	0.68
		1.25		9-1005-4	47.0	88.1	0.19	99.9	0.21	146.9	0.31	0.85
		1.50		9-1006-4	38.0	85.5	0.23	96.9	0.26	142.5	0.38	1.03
		1.75		9-1007-4	32.0	84.0	0.26	95.2	0.30	140.0	0.44	1.20
		2.00		9-1008-4	29.0	87.0	0.30	98.6	0.34	145.0	0.50	1.38
		2.50		9-1010-4	22.0	82.5	0.38	93.5	0.43	137.5	0.63	1.81
		3.00		9-1012-4	19.0	85.5	0.45	96.9	0.51	142.5	0.75	2.06
		12.00		9-1014-4	16.0	84.0	0.53	95.2	0.60	140.0	0.88	2.39
3/4	3/8	1.00	0.140 X 0.155	9-1016-4	13.5	81.0	0.60	91.8	0.68	135.0	1.00	2.78
		4.00		9-1048-4	4.5	81.0	1.80	91.8	2.04	135.0	3.00	7.87
		1.00		9-1204-4	140.0	210.0	0.15	238.0	0.17	350.0	0.25	0.71
		1.25		9-1205-4	110.0	206.3	0.19	233.8	0.21	343.8	0.31	0.89
		1.50		9-1206-4	89.0	200.3	0.23	227.0	0.26	333.8	0.38	1.06
		1.75		9-1207-4	75.0	196.9	0.26	223.1	0.30	328.1	0.44	1.24
		2.00		9-1208-4	68.0	204.0	0.30	231.2	0.34	340.0	0.50	1.42
		2.50		9-1210-4	50.0	187.5	0.38	212.5	0.43	312.5	0.63	1.76
		3.00		9-1212-4	40.5	182.3	0.45	206.6	0.51	303.8	0.75	2.07
		3.50		9-1214-4	34.5	181.1	0.53	205.3	0.60	301.9	0.88	2.41
		4.00		9-1216-4	30.0	180.0	0.60	204.0	0.68	300.0	1.00	2.76
		4.50		9-1218-4	26.5	178.9	0.68	202.7	0.77	298.1	1.13	3.10
5.00	9-1220-4	23.5	176.3	0.75	199.8	0.85	293.8	1.25	3.42			
5.50	9-1222-4	21.5	177.4	0.83	201.0	0.94	295.6	1.38	3.78			
6.00	9-1224-4	19.5	175.5	0.90	198.9	1.02	292.5	1.50	4.10			
12.00	9-1248-4	9.5	171.0	1.80	193.8	2.04	285.0	3.00	8.10			

\* NOTE: For design purposes only. We do not recommend deflecting a spring to maximum deflection.