

● **Order No. Example**
3012H Body
(2 MB sprockets + 1 chain)
3012C Case

1 Set



Order Method

Coupling No. and Quantity

Dedicated Chain No. Dedicated Case No.

Combinations and Quantity



Postage

Same-day shipping



Guide

MB3012
 MB3012) = 3012H
 3012L) 1 Set
 3012C

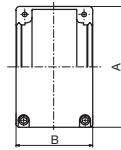
- The body (H) consists of 2 sprockets (MB) and 1 chain (L).
- The body (H) and case (C) make up 1 set.



* Content of the Body

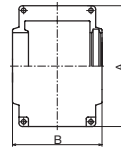
Method 1

KC-3012 to KC-8022 Dedicated Cases
 (Method with O-ring seals on both sides)



Method 2

KC-10020 to KC-12022 Dedicated Cases
 (method where one side is fixed and the other is a Z-type oil seal)



3012L

Coupling No.

* You may order just the chain if required.

◇ Dedicated Case

Dedicated Case No.	A	B	Weight (kg)	¥
3012C	69	63	0.3	
4012C	77	72	0.3	
4014C	84	75	0.4	
4016C	92	75	0.4	
5014C	101	85	0.5	
5016C	111	85	0.6	
5018C	122	85	0.8	
6018C	142	106	1.2	
6020C	158	105	1.6	
6022C	168	117	1.8	
8018C	190	129	2.5	
8020C	210	137	2.9	
8022C	226	137	3.6	
10020C	281	153	4.6	
12018C	307	181	6.2	
12022C	357	181	8.0	

◇ Dedicated Chain

Dedicated Chain No.	Weight (kg)	¥
3012L	0.1	
4012L	0.2	
4014L	0.2	
4016L	0.3	
5014L	0.4	
5016L	0.5	
5018L	0.6	
6018L	1.0	
6020L	1.2	
6022L	1.3	
8018L	2.3	
8020L	2.5	
8022L	2.7	
10020L	4.8	
12018L	7.6	
12022L	9.3	

A1 Multi-EP Grease No.2

For the lubricant agent, please use the dedicated KANA standard coupling grease.

MBSG04
 Internal Capacity 400g



MBSG05
 Internal Capacity 500g



MBSG25
 Internal Capacity 2.5kg/16kg



▶▶ See P345

● **Order No. Example**
MB 4012

Type Model No.

Chain Coupling No.

* An MB sprocket is on one side of the body (only 1 sprocket).

Body Dimensions		Chain Coupling No.		Prepared Holes	Shaft Hole Machining Limits		Weight kg	¥	Semi-F ¥
BL	BD	Type	Model No.		Minimum	Maximum			
29.8	26.5	MB	3012	12	14	16	0.2		
36.0	36.0		4012	12	14	22	0.3		
36.0	45.0		4014	12	14	30	0.5		
40.0	51.0		4016	14.5	16	32	0.6		
45.0	56.0		5014	14	16	35	0.9		
45.0	63.0		5016	16	18	40	1.1		
45.0	73.0		5018	16	18	45	1.6		
56.0	88.0		6018	20	22	55	2.6		
56.0	102.5		6020	20	22	60	3.6		
56.0	115.0		6022	20	22	70	4.6		
63.0	115.0		8018	20	22	80	5.2		
65.0	125.0		8020	20	22	85	7.0		
71.0	143.0		8022	20	22	100	8.8		
80.0	162.0		10020	25	27	110	14.1		
90.0	170.0		12018	35	37	125	19.7		
100.0	210.0		12022	35	37	140	31.4		

* Please refer to P24 to P33 for the Semi-F Series <Complete Product> order method.

Semi-F Series & FITLINK
 Roller Chains
 Chain Accessories
 Idlers & Tensioners
 Sprockets
 Oilless Bushings
 Transmission Accessories
 Conveyor Chains/Sprockets
 Chain Couplings
 Resin Rails
 Triple Speed/Center
 Tipping Bars/Pulleys/Hangers
 Shaft Collars
 Pinions/Racks/Miter Gears
 Imperfect Products