

HMF Series Wide Opening Parallel Hand

Low Height Wide Opening Crab-Shaped Parallel Hand for Use in Multi-Purpose Application

Key Features

■ Small and light-weight

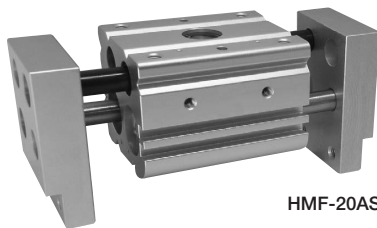
Low profile body design for use in confined spaces
Simple and compact body design

■ Powerful grip force

High grip force by using 2 pistons

■ Long stroke for handling multiple workpieces in different sizes

Long motion stroke for multi-purpose use



HMF-20AS

How To Order

Standard ----- HMF-12AS

Option ----- **HMF - 16AS - L1 - ET3S2 - MY** ----- HMF-16AS-L1 with base jaws mounted by 90-degree and 2 of ET3 non-contact reed switches

Model		Size	Stroke		Sensor, Quantity		Option			
Symbol	Name	Symbol	Symbol	Name	Symbol	Name	Symbol	Name		
HMF	Normal	12AS	No Symbol	Normal	ET3	Non-Contact 3-Lead	E25	Contact 2-Lead	MY	External Finger Direction Change
HMF-□□-L1	Long Stroke Type	16AS	L1	Long Stroke Type	ET3L	Non-Contact 3-Lead	E25L	Contact 2-Lead		
HMF-□□-L2	Long Stroke Type	20AS	L2	Long Stroke Type	ET2	Non-Contact 2-Lead	S1	1 Sensor		
HMF-□□-B1	Linear Guide Type	25AS	B1	Linear Guide Type	ET2L	Non-Contact 2-Lead	S2	2 Sensors		
HMF-□□-B2	Linear Guide Type	32AS	B2	Linear Guide Type	E24	Contact 2-Lead				
		40AS			E24L	Contact 2-Lead				

* Except 12AS

For sensor detail ▶277P For option detail ▶36P

Specification

Model	HMF-12AS	HMF-16AS		HMF-20AS		HMF-25AS HMF-25AS-B			HMF-32AS HMF-32AS-B			HMF-40AS HMF-40AS-B										
	For Layout Drawing ▶99P	For Layout Drawing ▶100P		For Layout Drawing ▶101P		For Layout Drawing ▶102P			For Layout Drawing ▶103P			For Layout Drawing ▶104P										
		Standard	L1	L2	Standard	L1	L2	Standard	L1	L2	Standard	L1	L2	Standard	L1	L2						
Working Pressure	Pneumatic: 0.3 to 0.7MPa																					
Lubrication	Not Required or Turbine Oil Class 1 (ISOVG32)																					
Ambient Temperature (°C)	5 to 60																					
Total Jaw Stroke (mm)	20	30	60	80	40	80	100	50	100	120	70	120	160	100	160	200						
Cylinder Diameter (mm)	dia.12×2	dia.16×2		dia.20×2		dia.25×2			dia.32×2			dia.40×2										
Rod Diameter (mm)	dia.6	dia.8		dia.10		dia.12			dia.16			dia.20										
Internal Volume [Reciprocation] (cm ³ /time)	3.39	9.05	18.1	24.1	18.8	37.6	47	37.7	75.4	90.5	84.4	145	193	226	301	377						
Repeatability (mm)	±0.1																					
Weight (kg)	0.31	0.54	0.95	1.12	0.9	1.58	1.77	1.7	L1/2.16	L2/2.3	B1/4.06	B2/4.13	2.8	L1/3.8	L2/4.8	B1/5.97	B2/7.2	5.7	L1/7.8	L2/8.8	B1/10.1	B2/11.8