

Type ED Electric Actuators / Class 10K Bronze or Stainless Steel Ball Valves

■ DC 12V or 24V for handy, on-the-spot automated valve operation

12 V / 24 V DC

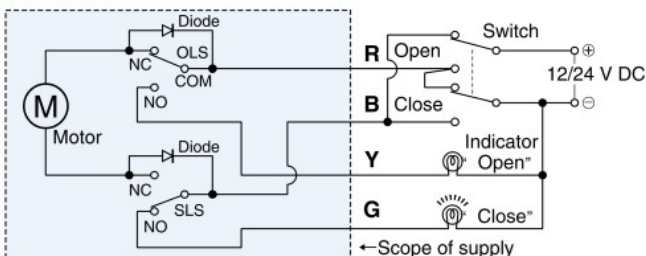
Type ED actuator design specifications

Specification \ Type	ED12-1	ED24-1	ED12-2	ED24-2
Power source 50Hz / 60Hz	12 V DC	24 V DC	12 V DC	24 V DC
Rated current	360 mA	140 mA	520 mA	260 mA
Max. power consumption	5 W	4 W	9 W	10 W
Valve closing time 90° 50 Hz	Approx. 5 sec			
Max. output torque	1.4 N·m		7.3 N·m	
Rated time	5 min			
Insulation class	JIS Class E			
Position limit switch	1 unit each for opening / closing (Using the same power source as that of the actuator)			
Insulation strength	250 V AC (1 min. interval)		500 V AC (1 min. interval)	
Insulation resistance	Minimum 10 MΩ (500 V DC)			
Standard protection	All weather type (for outdoor use)			
Ambient temperature	-20°C to +50°C			
Mounting position	Vertical to horizontal			
Wiring	Vinyl cabtyre cord with 4 cores 0.3 mm ²		UL approved noninflammable cord with 4 cores 0.5 mm ²	
Lubrication	Grease			
Overload protection	Impedance protection		Thermal protection	
Coating color	Housing: black		Cover: light blue	

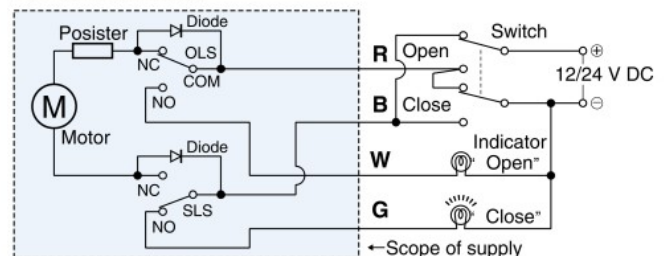
Note: Type ED12-2 and ED24-2 are optionally available for mobile application.
Don't spray high pressure water directly to Type ED actuator during car wash.

Type ED actuator circuit diagrams (with the valve fully closed)

ED 12 / 24 Size 1



ED 12 / 24 Size 2



- Wire color: **R** red **W** white **B** black **Y** yellow **G** green
- Actuator rotates:
 - R**⊕ - **B**⊖: Counter-clockwise to fully open the valve
 - R**⊖ - **B**⊕: Clockwise to fully close the valve
- Limit switches activate:
 - OLS: on fully opening the valve (R-B: off R-Y(W): on)
 - SLS: on fully closing the valve (R-B: off B-G: on)