



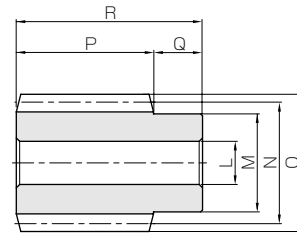
# SUW Stainless Steel Worms



Module 2, 2.5, 3



Specifications			
Precision grade	KHK W 001 grade 4 *		
Reference section of gear	Normal plane		
Gear teeth	Standard full depth		
Material	SUS303		
Heat treatment	—		
Tooth hardness	(less than 187HB)		
Module	<b>m2</b>	<b>m2.5</b>	<b>m3</b>
Normal pressure angle	14° 30'	20°	14° 30'
Screw offset (S)	7	9	10



W1

\* The precision grade of J Series products is equivalent to the value shown in the table.  
\* The pressure angle is at 20 degrees for module 2.5.

Catalog No.	Normal module	Number of starts	Lead angle	Hand thread	Shape	Bore	Hub dia.	Pitch dia.	Outside dia.	Face width	Hub width	Total length	Weight
						LH7	M	N	O	P	Q	R	(kg)
SUW2-R1	<b>m2</b>	1	3°42'	R	W1	12	25	31	35	32	14	46	0.20
SUW2-R2		2	7°25'			12	25	31	35	32	14	46	0.20
SUW2.5-R1	<b>m2.5</b>	1	3°52'			15	30	37	42	45	18	63	0.39
SUW2.5-R2		2	7°46'			15	30	37	42	45	18	63	0.39
SUW3-R1	<b>m3</b>	1	3°55'			16	35	44	50	50	20	70	0.63
SUW3-R2		2	7°50'			16	35	44	50	50	20	70	0.63

[Caution on Product Characteristics] ① These worms produce axial thrust forces. See Page 344 for more details.



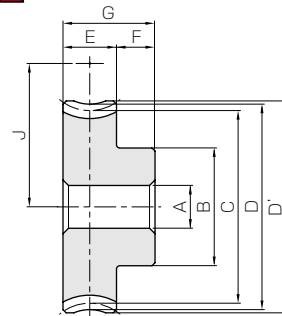
# PG Plastic Worm Wheels



Module 2, 2.5, 3



Specifications			
Precision grade	KHK W 002 grade 5 *		
Reference section of gear	Normal plane		
Gear teeth	Standard full depth		
Material	MC901 Nylon		
Heat treatment	—		
Tooth hardness	—		
Module	<b>m2</b>	<b>m2.5</b>	<b>m3</b>
Normal pressure angle	14° 30'	20°	14° 30'
Face width (E)	22	22	28
Hub width (F)	13	14	15
Total length (G)	35	36	43
Screw offset (L)	6.5	7	7.5



H1

\* The precision grade of this product is equivalent to the value shown in the table.

Catalog No.	Reduction ratio	No. of teeth	Number of starts	Helix angle	Hand thread	Shape	Bore	Hub dia.	Pitch dia.	Throat dia.	Outside dia.	Mounting distance	Allowable torque (N·m)	Allowable torque (kgf·m)	Backlash	Weight
							A	B	C	D	D'	J	Bending strength	Bending strength	(mm)	(kg)
PG2-20R1	20	20	1	3°42'	R	H1	10	33	40.08	44	46	35.5	4.78	0.49	0~0.33	0.046
PG2-20R2	10		2	7°25'			10	33	40.34	44	46	35.5	4.82	0.49	0~0.33	0.046
PG2.5-20R1	20		1	3°52'			12	35	50.11	55	57.5	43.5	(8.46)	0.86	0~0.36	0.066
PG2.5-20R2	10		2	7°46'			12	35	50.46	55	57.5	43.5	(8.54)	0.87	0~0.36	0.066
PG3-20R1	20		1	3°55'			15	50	60.14	66	69	52	(13.7)	1.40	0~0.38	0.13
PG3-20R2	10		2	7°50'			15	50	60.57	66	69	52	(13.8)	1.41	0~0.38	0.13

- [Caution on Product Characteristics]
- ① Worm Wheels are profile shifted to create the proper center distance.
  - ② Significant variations in temperature or humidity can cause dimensional changes in plastic gears (MC Nylon gears), for bore size (H8 when produced), teeth diameter, and backlash. Please see the section "Design of Plastic Gears" in separate technical reference book (Page 101).
  - ③ The allowable torques shown in the table are the calculated values according to the assumed usage conditions. Usage above the value in brackets will exceed the maximum allowable sliding speed, if no lubrication is applied. So, lubrication is required. Please see Page 342 for more details.