



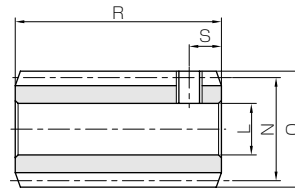
SW Steel Worms



Module 1, 1.25



Specifications	
Precision grade	KHK W 001 grade 4
Reference section of gear	Normal plane
Gear teeth	Standard full depth
Normal pressure angle	20°
Material	S45C
Heat treatment	—
Tooth hardness	(less than 194HB)



W2

Catalog No.	Normal module	Number of starts	Lead angle	Hand thread	Shape	Bore	Hub dia.	Pitch dia.	Outside dia.	Face width	Hub width (R)	Hub width (L)
						LH7	M	N	O	P	Q	Q'
SW1-R1	m1	1	3°35'	R	W2	6	—	16	18	—	—	—
SW1-R2		2	7°11'	R	W2	6	—	16	18	—	—	—
SW1.25-R1	m1.25	1	3°25'	R	W2	8	—	21	23.5	—	—	—
SW1.25-R2		2	6°50'	R	W2	8	—	21	23.5	—	—	—

[Caution on Product Characteristics]

- For W2-shaped products, a set screw is included. When setting up the mating wheel, make sure no friction occurs within the set screw.
- These worms produce axial thrust forces. See Page 344 for more details.
- If bore size is less than $\phi 4$, the diameter tolerance is H8. If bore size is $\phi 5$ or $\phi 6$, and the hole length exceeds 3 times the diameter, the tolerance is also H8.

* For products not categorized in our KHK Stock Gear series, custom gear production services with **short lead times** is available. For details see Page 8.



BG · CG

Bronze Worm Wheels & Gray Iron Worm Wheels

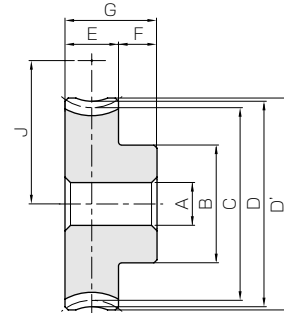


Module 1, 1.25



Specifications			
Catalog No.	BG	CG	
Precision grade	KHK W 002 grade 4 *		
Reference section of gear	Normal plane		
Gear teeth	Standard full depth		
Normal pressure angle	20°		
Material	CAC502 (formerly JIS PBC2)	FC200	
Heat treatment	—		
Tooth hardness	—		
Module	m1	m1.25	m1
Face width (E)	10	11	10
Hub width (F)	10	9	10
Total length (G)	20	20	20
Screw offset (L)	5	4.5	5

AH7	Bore
B	Hub dia.
C	Pitch dia.
D	Throat dia.
D'	Outside dia.
(H)	Web thickness
(I)	Web O.D.
J	Mounting distance



H1

* The precision grade of J Series products is equivalent to the value shown in the table.

NOTE 1 : Allowable torque for worm revolution (rpm)

Catalog No.	Reduction ratio	No. of teeth	Number of starts	Helix angle	Hand thread	Shape	AH7	B	C	D	D'	J	Allowable torque (N·m) NOTE 1					Backlash (mm)	Weight (kg)																																																																																																														
													30 rpm	100 rpm	300 rpm	600 rpm	900 rpm			1200 rpm																																																																																																													
													R							H1																																																																																																													
BG1-20R1	20	20	1	3°35'		R	6	16	20.05	22	23	18	1.89	1.58	1.26	1.04	0.92	0.85	0.06~0.24	0.043																																																																																																													
BG1-20R2	10	20	2	7°11'																	6	16	20.16	22	23	18	1.90	1.54	1.18	0.97	0.85	0.78	0.043																																																																																																
BG1-30R1	30	30	1	3°35'																														6	20	30.07	32	33	23	4.00	3.38	2.74	2.29	2.05	1.87	0.089																																																																																			
BG1-30R2	15	30	2	7°11'																																											6	20	30.24	32	33	23	4.03	3.35	2.62	2.14	1.91	1.74	0.089																																																																						
BG1-40R1	40	40	1	3°35'																																																								8	26	40.08	42	43	28	6.85	5.79	4.76	4.03	3.61	3.31	0.15																																																									
BG1-50R1	50	50	1	3°35'																																																																					8	30	50.1	52	53	33	10.3	8.76	7.27	6.18	5.58	5.14	0.23																																												
BG1.25-20R1	20	20	1	3°25'																																																																																		6	20	25.04	27.5	28.75	23	3.19	2.65	2.10	1.72	1.53	1.40	0.070																															
BG1.25-20R2	10	20	2	6°50'																																																																																															6	20	25.18	27.5	28.75	23	3.19	2.58	1.96	1.60	1.40	1.27	0.070																		
BG1.25-30R1	30	30	1	3°25'																																																																																																												6	25	37.57	40	41.25	29.25	6.75	5.67	4.56	3.81	3.40	3.09	0.15					
BG1.25-30R2	15	30	2	6°50'																																																																																																																									6	25	37.77	40	41.25
BG1.25-40R1	40	40	1	3°25'		8	30	50.09	52.5	53.75	35.5	11.5	9.71	7.92	6.70	5.98	5.47	0.24																																																																																																															
BG1.25-50R1	50	50	1	3°25'															8	40	62.61	65	66.25	41.75	17.4	14.7	12.1	10.3	9.25	8.49	0.40																																																																																																		
CG1-60R1	60	60	1	3°35'																												10	30	60.12	62	63	38	8.69	7.39	6.14	5.24	4.78	4.39	0.06~0.24	0.25																																																																																				
CG1-80R1	80	80																																												100	100	100	40	100.2	102	103	58	21.9	19.0	16.0	13.9	12.7	11.9																																																																						
CG1-100R1	100	100																																																										120	120	120	40	120.24	122	123	68	30.5	26.7	22.5	19.6	18.0																																																									
CG1-120R1	120	120																																																																																																																															

[Caution on Product Characteristics]

- Worm Wheels are profile shifted to create the proper center distance.
- The allowable torques shown in the table are the calculated values according to the assumed usage conditions. Please see Page 342 for more details.
- If bore size is less than $\phi 4$, the diameter tolerance is H8. If bore size is $\phi 5$ or $\phi 6$, and the hole length exceeds 3 times the diameter, the tolerance is also H8.

[Caution on Secondary Operations]

- Please read "Caution on Performing Secondary Operations" (Page 344) when performing modifications and/or secondary operations for safety concerns. KHK Quick-Mod Gears, the KHK's system for quick modification of KHK stock gears is also available.