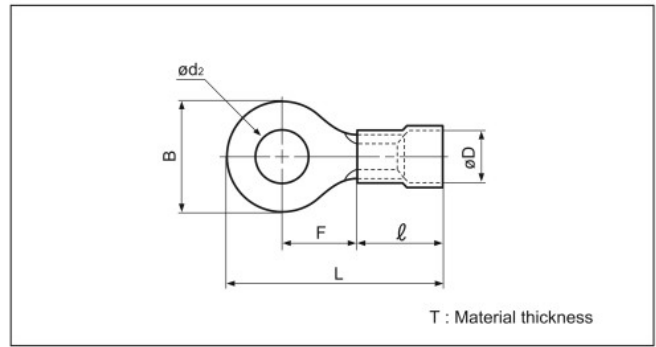


Solderless terminals

# RING TONGUE (R type) Vinyl-insulated (flared)



Certificate No.: E42024 LR20812 JQ0608019  
JIS C 2805

Applicable Wire AWG#(mm <sup>2</sup> )	Stud size		Part No.		Standard	Dimensions mm (in.)						Color	Tool No.	Qty/box								
	American	Metric	JST	JIS		$\phi d_2$	B	L	F	$\ell$	$\phi D$				T							
26 to 22 (0.2 to 0.5)	1-2	2	FV0.5-2			2.2 (.087)	5.2 (.205)	16.4 (.646)	5.8 (.228)	8.0 (.315)	2.9 (.114)	0.5 (.020)	Yellow	YNT-2622 YA-1 YA-2 BCT-0514L	1,000							
	3-4	3	FV0.5-3			3.2 (.126)	5.2 (.205)	16.4 (.646)	5.8 (.228)													
	5-6	3.5	FV0.5-3.7			3.7 (.146)	6.6 (.260)	19.0 (.748)	7.7 (.303)													
	8	4	FV0.5-4			4.3 (.169)	6.6 (.260)	19.0 (.748)	7.7 (.303)													
	10	5	FV0.5-5			5.3 (.209)	8.0 (.315)	19.0 (.748)	7.0 (.276)													
22 to 16 *(0.25 to 1.65)	1/4	6	FV0.5-6			6.4 (.252)	9.4 (.370)	20.7 (.815)	8.0 (.315)	9.0 (.354)	4.0 (.157)	0.8 (.031)	Red	YNT-2216 YA-1 YA-2 YA-4 BCT-0514L	1,000							
	1-2	2	FV1.25-2			2.2 (.087)	5.5 (.217)	15.7 (.618)	4.0 (.157)													
	3-4	3	FV1.25-3	RBA1.25-3			3.2 (.126)	5.5 (.217)	15.7 (.618)							4.0 (.157)						
	3-4	3	FV1.25-MS3			3.2 (.126)	5.5 (.217)	17.4 (.685)	5.6 (.220)													
	3-4	3	FV1.25-L3				3.2 (.126)	8.0 (.315)	20.0 (.787)							7.0 (.276)						
	5-6	3.5	FV1.25-3.7			3.7 (.146)	5.5 (.217)	15.7 (.618)	4.0 (.157)													
	5-6	3.5	FV1.25-M3	RBA1.25-3.5			3.7 (.146)	6.6 (.260)	18.6 (.732)							6.3 (.248)						
	8	4	FV1.25-M4			4.3 (.169)	6.6 (.260)	18.6 (.732)	6.3 (.248)													
	8	4	FV1.25-4	RBA1.25-4			4.3 (.169)	8.0 (.315)	20.0 (.787)							7.0 (.276)						
	10	5	FV1.25-5	RBA1.25-5			5.3 (.209)	8.0 (.315)	20.0 (.787)							7.0 (.276)						
	16 to 14 (1.04 to 2.63)	1/4	6	FV1.25-6				6.4 (.252)	11.6 (.457)							25.9(1.020)	11.1 (.437)	9.0 (.354)	4.5 (.177)	0.8 (.031)	Blue	YNT-1614 YA-1 YA-2 YA-4 BCT-0514L
5/16		8	FV1.25-8		8.4 (.331)	11.6 (.457)		25.9(1.020)	11.1 (.437)													
3/8		10	FV1.25-10		10.5 (.413)	13.6 (.535)		29.7(1.169)	13.9 (.547)													
1-2		2	FV2-S2		2.2 (.087)	6.4 (.252)		16.5 (.650)	4.3 (.169)													
3-4		3	FV2-MS3		3.2 (.126)	5.5 (.217)		17.4 (.685)	5.6 (.220)													
3-4		3	FV2-S3.3		3.2 (.126)	6.4 (.252)		16.5 (.650)	4.3 (.169)													
3-4		3	FV2-3		3.2 (.126)	8.5 (.335)		21.0 (.827)	7.8 (.307)													
5-6		3.5	FV2-S3		3.7 (.146)	6.4 (.252)		16.5 (.650)	4.3 (.169)													
5-6		3.5	FV2-M3	RBA2-3.5		3.7 (.146)		6.6 (.260)	18.6 (.732)	6.3 (.248)												
5-6		3.5	FV2-P3.5		3.7 (.146)	7.0 (.276)		20.2 (.780)	7.7 (.303)													
8		4	FV2-M4		4.3 (.169)	6.6 (.260)		18.6 (.732)	6.3 (.248)													
8		4	FV2-P4		4.3 (.169)	7.0 (.276)		20.2 (.800)	7.7 (.303)													
8		4	FV2-4	RBA2-4		4.3 (.169)		8.5 (.335)	21.0 (.827)	7.8 (.307)												
10		5	FV2-M5		5.3 (.209)	8.5 (.335)		21.0 (.827)	7.8 (.307)													
10		5	FV2-5	RBA2-5		5.3 (.209)		9.5 (.374)	21.0 (.827)	7.3 (.287)												
1/4		6	FV2-6	RBA2-6		6.4 (.252)		12.0 (.472)	26.0(1.024)	11.0 (.433)												
5/16		8	FV2-8	RBA2-8		8.4 (.331)		12.0 (.472)	26.0(1.024)	11.0 (.433)												
12 to 10 (2.63 to 6.64)	3/8	10	FV2-10			10.5 (.413)	13.6 (.535)	29.7(1.169)	13.9 (.547)	13.5 (.531)	6.8 (.268)	1.0 (.039)	Yellow	YNT-1210S YA-4 BCT-0514L	500							
	1/2	12	FV2-12			13.0 (.512)	19.0 (.748)	35.2(1.386)	16.7 (.657)													
	1/2	14	FV2-14			15.0 (.591)	27.0(1.063)	43.7(1.720)	21.2 (.835)													
	5/8	16	FV2-16			17.0 (.669)	27.0(1.063)	43.7(1.720)	21.2 (.835)													
	3/4	20	FV2-20			21.0 (.827)	27.0(1.063)	43.7(1.720)	21.2 (.835)													
	3-4	3	FV5.5-S3.3				3.2 (.126)	7.2 (.283)	23.0 (.906)							5.9 (.232)	13.5 (.531)	6.8 (.268)	1.0 (.039)	Yellow	YNT-1210S YA-4 BCT-0514L	500
	3-4	3	FV5.5-3				3.2 (.126)	9.5 (.374)	26.5(1.043)							8.3 (.327)						
5-6	3.5	FV5.5-S3		3.7 (.146)	7.2 (.283)		23.0 (.906)	5.9 (.232)														
5-6	3.5	FV5.5-3.7NS		3.7 (.146)	7.2 (.283)		29.2(1.149)	11.0 (.433)														
8	4	FV5.5-S4		4.3 (.169)	7.2 (.283)		23.0 (.906)	5.9 (.232)														
8	4	FV5.5-4	RBA5.5-4		4.3 (.169)		9.5 (.374)	26.5(1.043)	8.3 (.327)													
10	5	FV5.5-5	RBA5.5-5		5.3 (.209)		9.5 (.374)	26.5(1.043)	8.3 (.327)													
10	5	FV5.5-S5		5.3 (.209)	13.2 (.520)		29.1(1.146)	9.0 (.354)														
1/4	6	FV5.5-6	RBA5.5-6		6.4 (.252)		12.0 (.472)	32.5(1.280)	13.0 (.512)													
1/4	6	FV5.5-S6		6.4 (.252)	13.2 (.520)		29.1(1.146)	9.0 (.354)														
5/16	8	FV5.5-S8		8.4 (.331)	13.2 (.520)		29.1(1.146)	9.0 (.354)														
5/16	8	FV5.5-8	RBA5.5-8		8.4 (.331)		15.0 (.591)	34.7(1.366)	13.7 (.539)													
3/8	10	FV5.5-10	RBA5.5-10		10.5 (.413)		15.0 (.591)	34.7(1.366)	13.7 (.539)													
1/2	12	FV5.5-12		13.0 (.512)	19.2 (.756)		39.1(1.539)	16.0 (.630)														
1/2	14	FV5.5-14		15.0 (.591)	32.0(1.260)		54.8(2.157)	25.3 (.996)														
5/8	16	FV5.5-16		17.0 (.669)	32.0(1.260)		54.8(2.157)	25.3 (.996)														
11/16	18	FV5.5-18		19.0 (.748)	32.0(1.260)		54.8(2.157)	25.3 (.996)														
3/4	20	FV5.5-20		21.0 (.827)	32.0(1.260)	54.8(2.157)	25.3 (.996)															

Note: 1) Products with the JIS mark conform to JIS C2805.

2) \*The crimping will be more secure if the total cross-sectional area of the wire is at least 0.5 mm<sup>2</sup>.

Examples: If the cross-sectional area of the wire is 0.3 mm<sup>2</sup>, fold the wire in two when crimping the terminal.

If the cross-sectional area of the wire is 0.5 mm<sup>2</sup>, crimp the terminal onto the wire as it is.

3) The part numbers indicated in the above table are for products with a brazed seam.

When ordering products with a butted seam, add the prefix "WS" to the part number (ex. FV2-4 → **FVWS2-4**).

4) Delivery lead times may vary depending on the product. Contact JST for details.