

IB Type/IB-S Type

- STEEL
- STAINLESS
- UPWARD

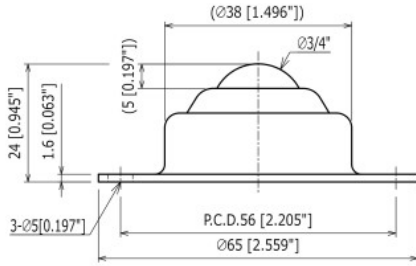
Load Capacity
 20 ~ 30kgf
 196 ~ 294N
 44 ~ 66lbf



Available in steel and stainless for light-loads, used in applications such as logistic truck floors, air cargos, work stations table, load/unload floors, etc.

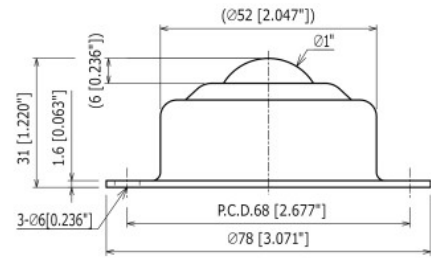
STEEL

IB-19



Ball Size	: ϕ 3/4" (19.05 mm)	Cap	: SPC
Product Weight	: 0.11 kg/ 0.24 lbs	Main Ball	: SUJ2
Load Capacity	: 20 kgf/ 196 N/ 44 lbf	Small Balls	: SUJ2
		Body	: SPC

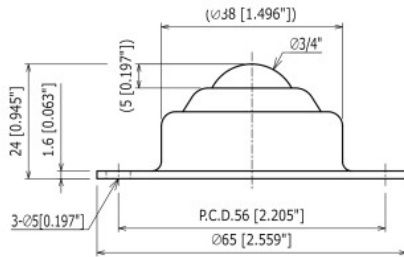
IB-25



Ball Size	: ϕ 1" (25.4 mm)	Cap	: SPC
Product Weight	: 0.25 kg/ 0.55 lbs	Main Ball	: SUJ2
Load Capacity	: 30 kgf/ 294 N/ 66 lbf	Small Balls	: SUJ2
		Body	: SPC

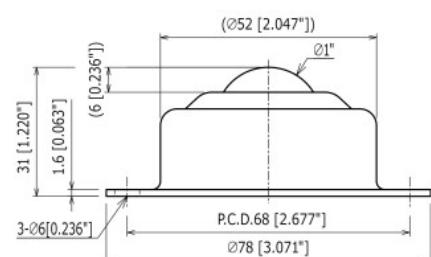
STAINLESS

IB-19S



Ball Size	: ϕ 3/4" (19.05 mm)	Cap	: SUS304
Product Weight	: 0.11 kg/ 0.24 lbs	Main Ball	: SUS440C
Load Capacity	: 20 kgf/ 196 N/ 44 lbf	Small Balls	: SUS440C
		Body	: SUS304

IB-25S



Ball Size	: ϕ 1" (25.4 mm)	Cap	: SUS304
Product Weight	: 0.25 kg/ 0.55 lbs	Main Ball	: SUS440C
Load Capacity	: 30 kgf/ 294 N/ 66 lbf	Small Balls	: SUS440C
		Body	: SUS304