

IS-N Type/IS-SN Type/IS-SNM Type

STEEL

STAINLESS

UPWARD

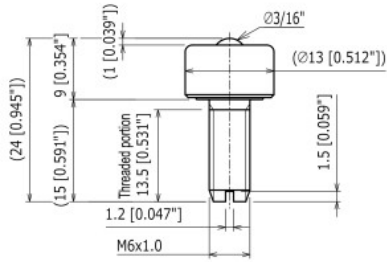
Load Capacity
5 ~ 250kgf
49 ~ 2450N
11 ~ 551lbf



Precision-machined stud mount ball transfer, easy installation with sturdy bolt.

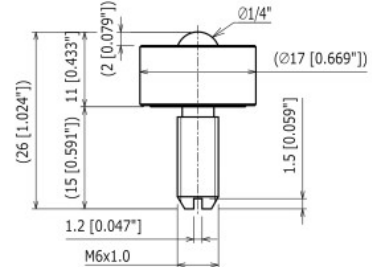
STEEL

IS-05N



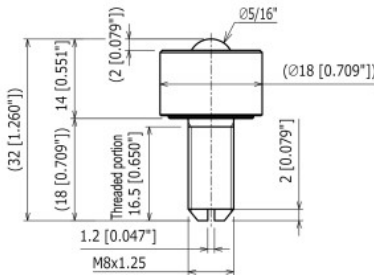
Ball Size	: ϕ 3/16" (4.76 mm)	Body	: SUS420J2
Product Weight	: 0.01 kg/ 0.02 lbs	Main Ball	: SUJ2
Load Capacity	: 10 kgf/ 98 N/ 22 lbf	Small Balls	: SUJ2
		Cap	: S45C

IS-06N



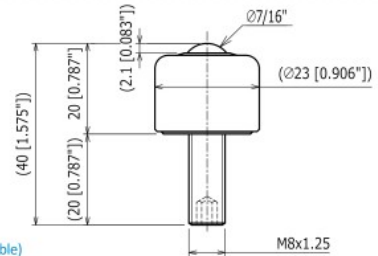
Ball Size	: ϕ 1/4" (6.35 mm)	Body	: SUS420J2
Product Weight	: 0.02 kg/ 0.04 lbs	Main Ball	: SUJ2
Load Capacity	: 20 kgf/ 196 N/ 44 lbf	Small Balls	: SUJ2
		Cap	: S45C

IS-08N



Ball Size	: ϕ 5/16" (7.94 mm)	Body	: SUS420J2
Product Weight	: 0.03 kg/ 0.07 lbs	Main Ball	: SUJ2
Load Capacity	: 30 kgf/ 294 N/ 66 lbf	Small Balls	: SUJ2
		Cap	: SUM

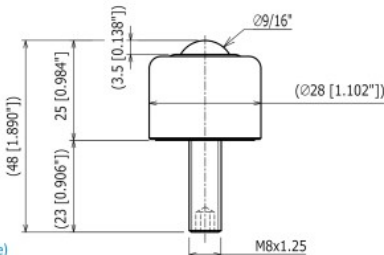
IS-10N



Hexagon socket head screw (Removable)

Ball Size	: ϕ 7/16" (11.11 mm)	Body	: SCM415
Product Weight	: 0.06 kg/ 0.13 lbs	Main Ball	: SUJ2
Load Capacity	: 40 kgf/ 392 N/ 88 lbf	Small Balls	: SUJ2
		Cap	: SPC
		Bolt	: SCM435

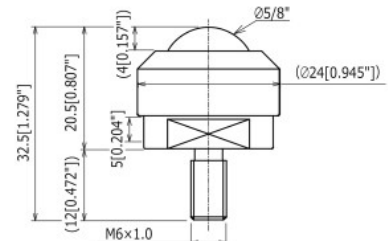
IS-13N



Hexagon socket head screw (Removable)

Ball Size	: ϕ 9/16" (14.29 mm)	Body	: SCM415
Product Weight	: 0.1 kg/ 0.22 lbs	Main Ball	: SUJ2
Load Capacity	: 50 kgf/ 490 N/ 110 lbf	Small Balls	: SUJ2
		Cap	: SPC
		Bolt	: SCM435

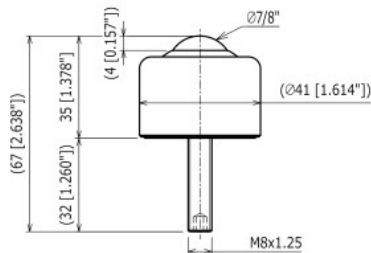
IS-16N



Width : 17 [0.669"]

Ball Size	: ϕ 5/8" (15.88 mm)	Body	: SCM415
Product Weight	: 0.05 kg/ 0.11 lbs	Main Ball	: SUJ2
Load Capacity	: 70 kgf/ 686 N/ 154 lbf	Small Balls	: SUJ2
		Cap	: SUM

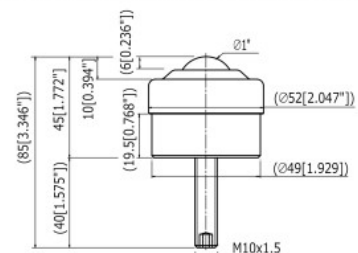
IS-19N



Hexagon socket head screw (Removable)

Ball Size	: ϕ 7/8" (22.23 mm)	Body	: SCM415
Product Weight	: 0.29 kg/ 0.64 lbs	Main Ball	: SUJ2
Load Capacity	: 100 kgf/ 980 N/ 221 lbf	Small Balls	: SUJ2
		Cap	: SPC
		Bolt	: SCM435

IS-25N



With Felt Seal
Hexagon socket head screw (Removable)

Ball Size	: ϕ 7/8" (22.23 mm)	Body	: SCM415
Product Weight	: 0.29 kg/ 0.64 lbs	Main Ball	: SUJ2
Load Capacity	: 100 kgf/ 980 N/ 221 lbf	Small Balls	: SUJ2
		Cap	: SUS304
		Bolt	: SCM435