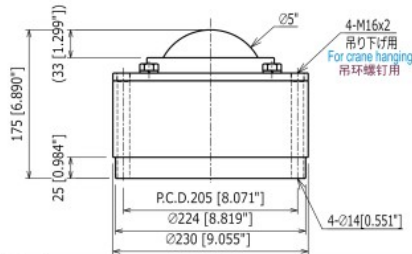


## IS-127

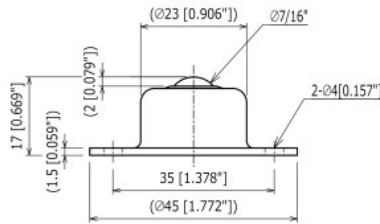


With Felt Seal

Ball Size	: $\phi$ 5" (127 mm)	Body	: SCM415
Product Weight	: 39.6 kg/ 87 lbs	Main Ball	: SUJ2
Load Capacity	: 1500 kgf/ 14700 N/ 3307 lbf	Small Balls	: SUJ2
		Cap	: S45C

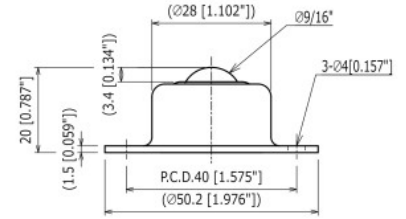
STAINLESS

## IS-10S



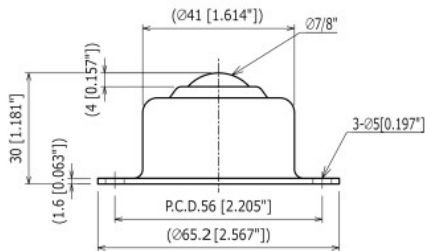
Ball Size	: $\phi$ 7/16" (11.11 mm)	Body	: SUS420J2
Product Weight	: 0.06 kg/ 0.13 lbs	Main Ball	: SUS440C
Load Capacity	: 40 kgf/ 392 N/ 88 lbf	Small Balls	: SUS440C
		Cap	: SUS304

## IS-13S



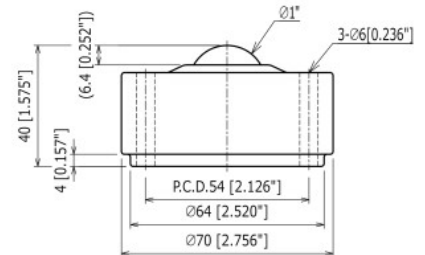
Ball Size	: $\phi$ 9/16" (14.29 mm)	Body	: SUS420J2
Product Weight	: 0.09 kg/ 0.2 lbs	Main Ball	: SUS440C
Load Capacity	: 50 kgf/ 490 N/ 110 lbf	Small Balls	: SUS440C
		Cap	: SUS304

## IS-19S



Ball Size	: $\phi$ 7/8" (22.23 mm)	Body	: SUS420J2
Product Weight	: 0.25 kg/ 0.55 lbs	Main Ball	: SUS440C
Load Capacity	: 100 kgf/ 980 N/ 221 lbf	Small Balls	: SUS440C
		Cap	: SUS304

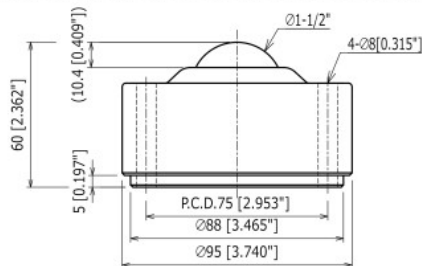
## IS-25S



With Felt Seal

Ball Size	: $\phi$ 1" (25.4 mm)	Body	: SUS420J2
Product Weight	: 0.9 kg/ 2 lbs	Main Ball	: SUS440C
Load Capacity	: 150 kgf/ 1470 N/ 331 lbf	Small Balls	: SUS440C
		Cap	: SUS304

## IS-38S



With Felt Seal

Ball Size	: $\phi$ 1-1/2" (38.1 mm)	Body	: SUS420J2
Product Weight	: 2.3 kg/ 5.1 lbs	Main Ball	: SUS440C
Load Capacity	: 250 kgf/ 2450 N/ 551 lbf	Small Balls	: SUS440C
		Cap	: SUS304