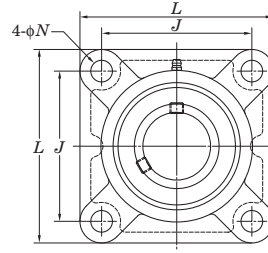
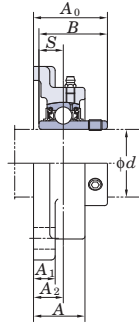


4-Bolt Flange Units

UCF

Cylindrical bore (with set screws)

d 12 ~ (45) mm



Shaft Dia. mm inch	Dimensions										Bolt Size inch mm	Standard		
	inch mm											Unit No.	Housing No.	Bearing No.
d	L	A	J	N	A_1	A_2	A_0	B	S					
12												UCF201		UC201
	1/2											UCF201-8		UC201-8
15	5/8	3 3/8	1	2 33/64	15/32	7/16	19/32	1 5/16	1.220	0.500	3/8	UCF202	F204	UC202
		86	25.5	64	12	11	15	33.3	31	12.7	M10	UCF202-10		UC202-10
17	3/4											UCF203		UC203
20												UCF204-12		UC204-12
												UCF204		UC204
	7/8											UCF205-14		UC205-14
	15/16	3 3/4	1 1/16	2 3/4	15/32	1/2	5/8	1 13/32	1.343	0.563	3/8	UCF205-15	F205	UC205-15
		95	27	70	12	13	16	35.8	34.1	14.3	M10	UCF205		UC205
25	1											UCF205-16		UC205-16
		4 1/4	1 3/16	3 17/64	15/32	1/2	45/64	1 19/32	1.500	0.626	3/8	UCFX05	FX05	UCX05
		108	30	83	12	13	18	40.2	38.1	15.9	M10	UCFX05-16		UCX05-16
		4 11/32	1 5/32	3 5/32	5/8	1/2	5/8	1 17/32	1.496	0.591	1/2	UCF305	F305	UC305
		110	29	80	16	13	16	39	38	15	M14	UCF305-16		UC305-16
	1 1/8											UCF206-18		UC206-18
	1 3/16	4 1/4	1 7/32	3 17/64	15/32	1/2	45/64	1 19/32	1.500	0.626	3/8	UCF206	F206	UC206
	1 1/4	108	31	83	12	13	18	40.2	38.1	15.9	M10	UCF206-19		UC206-19
30												UCF206-20		UC206-20
	1 3/16	4 19/32	1 11/32	3 5/8	5/8	9/16	3/4	1 3/4	1.689	0.689	1/2	UCFX06	FX06	UCX06
	1 1/4	117	34	92	16	14	19	44.4	42.9	17.5	M14	UCFX06-19		UCX06-19
		4 29/32	1 1/4	3 47/64	5/8	19/32	45/64	1 23/32	1.693	0.669	1/2	UCFX06-20		UCX06-20
	–	125	32	95	16	15	18	44	43	17	M14	UCF306	F306	UC306
	1 1/4											UCF207-20		UC207-20
	1 5/16	4 19/32	1 11/32	3 5/8	35/64	19/32	3/4	1 3/4	1.689	0.689	7/16	UCF207-21	F207	UC207-21
	1 3/8	117	34	92	14	15	19	44.4	42.9	17.5	M12	UCF207-22		UC207-22
35												UCF207		UC207
	1 7/16											UCF207-23		UC207-23
	1 3/8	5 1/8	1 1/2	4 1/64	5/8	9/16	53/64	2 1/32	1.937	0.748	1/2	UCFX07-22	FX07	UCX07-22
		130	38	102	16	14	21	51.2	49.2	19	M14	UCFX07		UCX07
	1 7/16	5 5/16	1 13/32	3 15/16	3/4	5/8	25/32	1 15/16	1.890	0.748	5/8	UCFX07-23		UCX07-23
	–	135	36	100	19	16	20	49	48	19	M16	UCF307	F307	UC307
	1 1/2	5 1/8	1 13/32	4 1/64	5/8	19/32	53/64	2 1/32	1.937	0.748	1/2	UCF208-24	F208	UC208-24
	1 9/16	130	36	102	16	15	21	51.2	49.2	19	M14	UCF208-25		UC208-25
40												UCF208		UC208
	1 1/2	5 13/32	1 9/16	4 9/64	3/4	9/16	55/64	2 1/16	1.937	0.748	5/8	UCFX08-24	FX08	UCX08-24
		137	40	105	19	14	22	52.2	49.2	19	M16	UCFX08		UCX08
	1 1/2	5 29/32	1 9/16	4 13/32	3/4	21/32	29/32	2 7/32	2.047	0.748	5/8	UCF308-24	F308	UC308-24
		150	40	112	19	17	23	56	52	19	M16	UCF308		UC308
	1 5/8											UCF209-26		UC209-26
	1 11/16	5 13/32	1 1/2	4 9/64	5/8	5/8	55/64	2 1/16	1.937	0.748	1/2	UCF209-27	F209	UC209-27
	1 3/4	137	38	105	16	16	22	52.2	49.2	19	M14	UCF209-28		UC209-28
45												UCF209		UC209
	1 11/16	5 5/8	1 9/16	4 3/8	3/4	9/16	29/32	2 3/16	2.031	0.748	5/8	UCFX09-27	FX09	UCX09-27
	1 3/4	143	40	111	19	14	23	55.6	51.6	19	M16	UCFX09-28		UCX09-28
												UCFX09		UCX09

- Remarks 1. In Part No. of unit and units with covers, fitting codes follow bore diameter numbers. (See Table 10.5 in P.62.)
 2. Part No. of applicable grease fittings are shown below.
 A-1/4-28UNF 201~210, X05~X09, 305~308
 A-R1/8..... 211~218, X10~X20, 309~328