

S-type

Press-molded products

RoHS

CAD

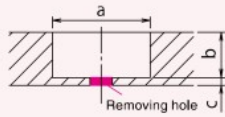
3D

Built-in spring type press-molded products adopting our proprietary technology.

The load becomes uniform by means of the built-in spring, preventing uneven load caused by the shape of the conveyance object.

Mounting hole diagram

When using with the freebear unfixed (Embedding)



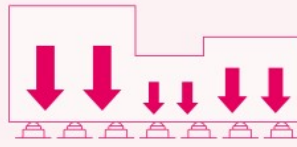
There may be foreign matter trapped in the gap between the freebear and the mounting hole, please cut a hole for removal.

Recommended mounting hole size

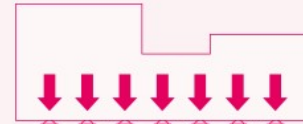
(Please adjust the hole depth according to the ball exit)

Model	a	b	c
□-3S	∅ 20.5 $\begin{smallmatrix} +0.1 \\ 0 \end{smallmatrix}$	8.6 ~ 15.4	2 or above
□-5S	∅ 26 $\begin{smallmatrix} +0.1 \\ 0 \end{smallmatrix}$	12 ~ 21.6	2 or above

The conveyance objects with special shapes as shown on the right may cause uneven load, which can be dispersed by using a product with built-in spring.



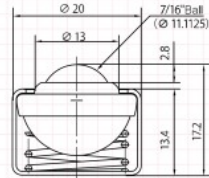
Normal freebear



Load dispersed by the built-in spring

C-3S

▲ Upward Steel



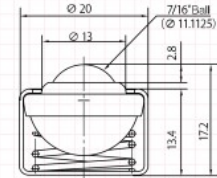
Spring sinking allowance 1.8mm

(Unit : mm)

Allowable load	49N(5kgf)	Main ball	SWRM	Spring	SWP
Mounting strength	49N(5kgf)	Small ball	SWRM	Outer cover	SPC
Max. strength	68N(7kgf)	Body (cover)	SPC		
Weight	18g	Ball seat	SPC		

S-3S

▲ Upward Stainless steel



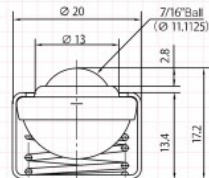
Spring sinking allowance 1.8mm

(Unit : mm)

Allowable load	49N(5kgf)	Main ball	SUS440C	Spring	SUS304
Mounting strength	49N(5kgf)	Small ball	SUS440C	Outer cover	SUS304
Max. strength	68N(7kgf)	Body (cover)	SUS304		
Weight	17g	Ball seat	SUS304		

P-3S

▲ Upward Resin



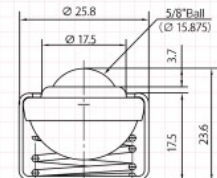
Spring sinking allowance 1.8mm

(Unit : mm)

Allowable load	9.8N(1kgf)	Main ball	Nylon	Spring	SWP
Mounting strength	9.8N(1kgf)	Small ball	SUS304	Outer cover	SPC
Max. strength	14.7N(1.5kgf)	Body (cover)	SPC		
Weight	12g	Ball seat	SPC		

C-5S

▲ Upward Steel



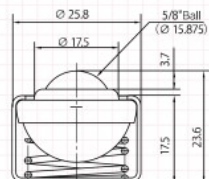
Spring sinking allowance 2mm

(Unit : mm)

Allowable load	78N(8kgf)	Main ball	SWRM	Spring	SWP
Mounting strength	78N(8kgf)	Small ball	SWRM	Outer cover	SPC
Max. strength	107N(11kgf)	Body (cover)	SPC		
Weight	37g	Ball seat	SUS304		

P-5S

▲ Upward Resin



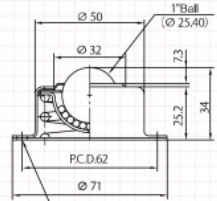
Spring sinking allowance 2mm

(Unit : mm)

Allowable load	19.6N(2kgf)	Main ball	Nylon	Spring	SWP
Mounting strength	19.6N(2kgf)	Small ball	SUS304	Outer cover	SPC
Max. strength	34.3N(3.5kgf)	Body (cover)	SPC		
Weight	21g	Ball seat	SUS304		

C-8S

▲ Upward Steel



Spring sinking allowance 2.5mm

(Unit : mm)

Allowable load	196N(20kgf)	Main ball	SWRM	Spring	SWP
Mounting strength	196N(20kgf)	Small ball	SWRM	Outer cover	SPC
Max. strength	294N(30kgf)	Body (cover)	SPC	Base plate	Steel plate
Weight	238g	Ball seat	SPC	Middle plate	Steel plate

※Product specifications are subject to change without prior notice. Please contact us for details. ※For materials not contained herein, please contact us.

※The main ball of the stainless steel products contained herein is made of SUS440C. Please consult us for rust prevention purposes.

※The weight of single conveyance object shall not exceed 1,000 kg. It may change depending on conditions. Please consult us for details.