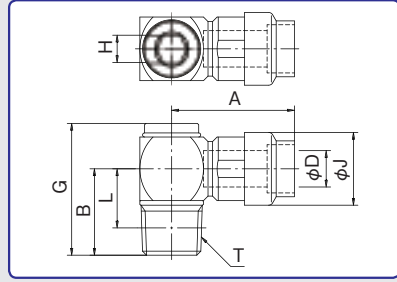


タッチコネクタファイブ Hタイプ

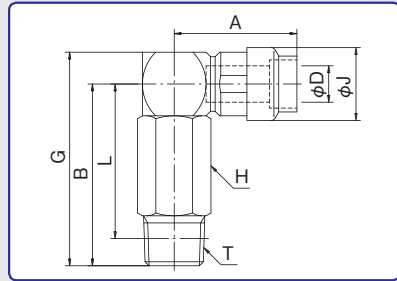
TOUCH CONNECTOR FIVE H TYPE

シングルバンジョー SINGLE BANJO



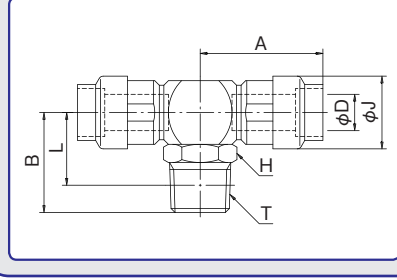
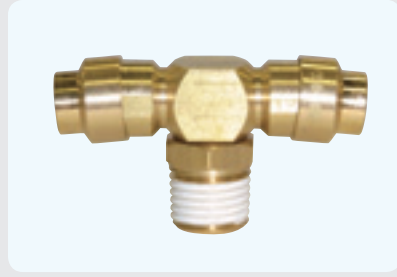
型式 Model	A	B	適用 チューブ 外径 Tube O. D. φD	G	二面幅 Spanner Flats H	φJ	L	チューブ 挿入寸法 Tube Insertion Depth	剥離寸法	ねじサイズ Thread T (おねじ)	重量 Weight (g)
HB-6-01S1	25.0	15.0	6	23.5	5.0	14.0	11.0	18.7	12.7	R1/8	23.7
HB-6-02S1	25.0	18.0	6	26.5	5.0	14.0	12.0	18.7	12.7	R1/4	27.7
HB-8-01S1	27.0	16.0	8	26.0	6.0	16.0	12.0	19.9	13.9	R1/8	32.3
HB-8-02S1	27.0	19.0	8	29.0	6.0	16.0	13.0	19.9	13.9	R1/4	35.3
HB-8-03S1	27.0	20.0	8	30.0	6.0	16.0	13.6	19.9	13.9	R3/8	41.4
HB-10-01S1	31.5	17.5	10	30.0	8.0	19.0	13.5	21.8	14.8	R1/8	52.9
HB-10-02S1	31.5	20.5	10	33.0	8.0	19.0	14.5	21.8	14.8	R1/4	54.7
HB-10-03S1	31.5	21.5	10	34.0	8.0	19.0	15.1	21.8	14.8	R3/8	59.8
HB-10-04S1	31.5	24.5	10	37.0	8.0	19.0	16.5	21.8	14.8	R1/2	71.8
HB-12-02S1	33.5	21.5	12	36.0	10.0	21.5	15.5	22.6	15.6	R1/4	69.8
HB-12-03S1	33.5	22.5	12	37.0	10.0	21.5	16.1	22.6	15.6	R3/8	72.6
HB-12-04S1	33.5	25.5	12	40.0	10.0	21.5	17.5	22.6	15.6	R1/2	83.6

ロングメイルエルボ LONG MALE ELBOW



型式 Model	A	B	適用 チューブ 外径 Tube O. D. φD	G	二面幅 Spanner Flats H	φJ	L	チューブ 挿入寸法 Tube Insertion Depth	剥離寸法	ねじサイズ Thread T (おねじ)	重量 Weight (g)
HB-6-01M2L	25.0	34.0	6	40.0	12.0	14.0	30.0	18.7	12.7	R1/8	39.2
HB-6-02M2L	25.0	37.0	6	43.0	14.0	14.0	31.0	18.7	12.7	R1/4	47.1
HB-8-01M2L	27.0	37.0	8	44.0	14.0	16.0	33.0	19.9	13.9	R1/8	57.3
HB-8-02M2L	27.0	40.0	8	47.0	14.0	16.0	34.0	19.9	13.9	R1/4	55.8
HB-8-03M2L	27.0	41.0	8	48.0	17.0	16.0	34.6	19.9	13.9	R3/8	70.8
HB-10-02M2L	31.5	45.5	10	54.0	17.0	19.0	39.5	21.8	14.8	R1/4	95.4
HB-10-03M2L	31.5	46.5	10	55.0	17.0	19.0	40.1	21.8	14.8	R3/8	93.7
HB-10-04M2L	31.5	49.5	10	58.0	21.0	19.0	41.5	21.8	14.8	R1/2	121.6
HB-12-02M2L	33.5	49.0	12	58.5	19.0	21.5	43.0	22.6	15.6	R1/4	129.3
HB-12-03M2L	33.5	50.0	12	59.5	19.0	21.5	43.6	22.6	15.6	R3/8	125.3
HB-12-04M2L	33.5	53.0	12	62.5	21.0	21.5	45.0	22.6	15.6	R1/2	140.7

メイルブランチティ MALE BRANCH TEE



型式 Model	A	B	適用 チューブ 外径 Tube O. D. φD	二面幅 Spanner Flats H	φJ	L	チューブ 挿入寸法 Tube Insertion Depth	剥離寸法	ねじサイズ Thread T (おねじ)	重量 Weight (g)
HB-6-M5MT	25.0	13.5	6	12.0	14.0	10.5	18.7	12.7	M5x0.8	30.9
HB-6-01MT	25.0	18.0	6	12.0	14.0	14.0	18.7	12.7	R1/8	33.1
HB-6-02MT	25.0	21.0	6	14.0	14.0	15.0	18.7	12.7	R1/4	37.9
HB-6-03MT	25.0	23.0	6	17.0	14.0	16.6	18.7	12.7	R3/8	46.7
HB-8-01MT	27.0	19.0	8	14.0	16.0	15.0	19.9	13.9	R1/8	44.4
HB-8-02MT	27.0	22.0	8	14.0	16.0	16.0	19.9	13.9	R1/4	46.9
HB-8-03MT	27.0	24.0	8	17.0	16.0	17.6	19.9	13.9	R3/8	55.4
HB-10-01MT	31.5	21.5	10	17.0	19.0	17.5	21.8	14.8	R1/8	73.0
HB-10-02MT	31.5	24.5	10	17.0	19.0	18.5	21.8	14.8	R1/4	73.5
HB-10-03MT	31.5	25.5	10	17.0	19.0	19.1	21.8	14.8	R3/8	78.7
HB-10-04MT	31.5	28.5	10	21.0	19.0	20.5	21.8	14.8	R1/2	92.6
HB-12-02MT	33.5	25.5	12	19.0	21.5	19.5	22.6	15.6	R1/4	93.4
HB-12-03MT	33.5	26.5	12	19.0	21.5	20.1	22.6	15.6	R3/8	97.4
HB-12-04MT	33.5	29.5	12	21.0	21.5	21.5	22.6	15.6	R1/2	108.1