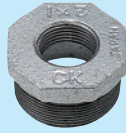
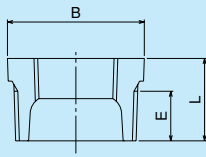


CKe galvanized iron pipe fitting

Bushings (Bu)

Unit : mm



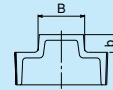
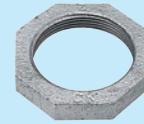
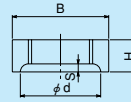
Fitting sizes	L	E (informative)	Widths across flats, B		Fitting sizes	L	E (informative)	Widths across flats, B	
			Hexagon	Octagon				Hexagon	Octagon
1/4 x 1/8	17	12	17	—	2 x 3/4	36	25	—	63
3/8 x 1/8	18	13	21	—	2 x 1	36	25	—	63
3/8 x 1/4	18	13	21	—	2 x 1 1/4	36	25	—	63
1/2 x 1/8	21	16	26	—	2 x 1 1/2	36	25	—	63
1/2 x 1/4	21	16	26	—	* 2 1/2 x 1/2	39	28	—	80
1/2 x 3/8	21	16	26	—	* 2 1/2 x 3/4	39	28	—	80
3/4 x 1/4	24	18	32	—	2 1/2 x 1	39	28	—	80
3/4 x 3/8	24	18	32	—	2 1/2 x 1 1/4	39	28	—	80
3/4 x 1/2	24	18	32	—	2 1/2 x 1 1/2	39	28	—	80
1 x 1/4	27	20	38	—	2 1/2 x 2	39	28	—	80
1 x 3/8	27	20	38	—	3 x 1	44	32	—	95
1 x 1/2	27	20	38	—	3 x 1 1/4	44	32	—	95
1 x 3/4	27	20	38	—	3 x 1 1/2	44	32	—	95
1 1/4 x 3/8	30	22	46	—	3 x 2	44	32	—	95
1 1/4 x 1/2	30	22	46	—	3 x 2 1/2	44	32	—	95
1 1/4 x 3/4	30	22	46	—	* 4 x 3/4	51	37	—	120
1 1/4 x 1	30	22	46	—	4 x 1 1/2	51	37	—	120
1 1/2 x 1/2	32	23	54	—	4 x 2	51	37	—	120
1 1/2 x 3/4	32	23	54	—	4 x 2 1/2	51	37	—	120
1 1/2 x 1	32	23	54	—	4 x 3	51	37	—	120
1 1/2 x 1 1/4	32	23	54	—	5 x 4	57	42	—	145
2 x 1/2	36	25	—	63					

Fittings marked * are not defined in the JIS standard.

CKe galvanized iron pipe fitting

Backnut (Lock nut) (LN) Plugs (P)

Unit : mm



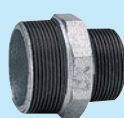
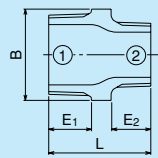
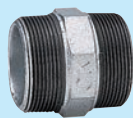
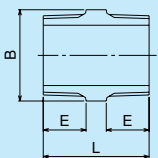
Fitting sizes	Height H	Diam. d	Depths S	Widths across flats, B		Fitting sizes	Heads (four sided)	
				Hexagon	Octagon		Widths across flats, B	Heights, b
3/8	9	22	1.2	26	—	1/2	14	10
1/2	9	28	1.2	32	—	3/4	17	11
3/4	10	34	1.5	38	—	1	19	12
1	11	40	1.5	46	—	1 1/4	23	13
1 1/4	12	50	1.5	54	—	1 1/2	26	14
1 1/2	13	55	2.5	—	63	2	32	15
2	15	68	2.5	—	77	2 1/2	41	18
2 1/2	17	88	2.5	—	100	3	46	19
3	18	100	2.5	—	115	4	58	22
4	22	125	2.5	—	145	5	67	25
						6	77	28

● Threads shall be in accordance with JIS B 0202. The tolerances, however, shall be twice the values required in the said standard.

CKe galvanized iron pipe fitting

Nipples (Ni) Reducing nipples (RNi)

Unit : mm

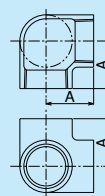


Fitting sizes	L	E (informative)	Widths across flats, B		Fitting sizes ① x ②	L	E1 (informative)	E2 (informative)	Widths across flats, B	
			Hexagon	Octagon					Hexagon	Octagon
1/8	33	11	14	—	3/8 x 1/4	38	15	13	21	—
1/4	37	12	17	—	1/2 x 3/8	39	16	13	26	—
3/8	36	13	21	—	3/4 x 1/2	45	18	16	32	—
1/2	42	16	26	—	1 x 1/2	48	20	16	38	—
3/4	50	18	32	—	1 x 3/4	50	20	18	38	—
1	52	20	38	—	1 1/4 x 1	54	22	20	46	—
1 1/4	56	22	46	—	1 1/2 x 1	57	23	20	54	—
1 1/2	60	23	54	—	1 1/2 x 1 1/4	59	23	22	54	—
2	66	25	—	63	2 x 1	61	25	20	—	63
2 1/2	73	28	—	80	2 x 1 1/2	64	25	23	—	63
3	81	32	—	95						
4	92	37	—	120						
5	104	42	—	145						
6	116	46	—	170						

CKe galvanized iron pipe fitting

Side outlet elbows (SOL)

Unit : mm



Fitting sizes	Face-to-centre dimensions
	A
1/2	26
3/4	30
1	38