



Accessory dimensions

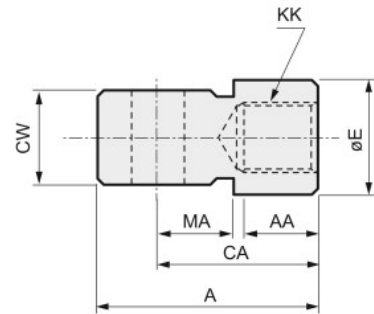
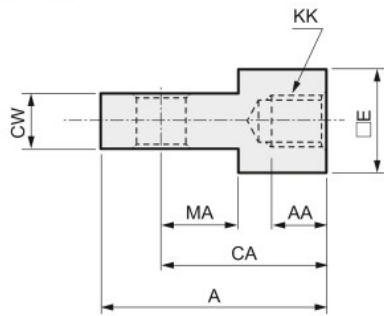
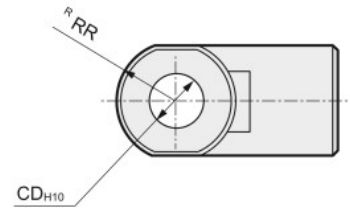
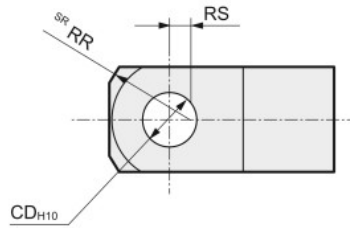
● Rod eye

● SCM-I- ϕ 20 to ϕ 32

Material: Steel
Chromate
treatment

● SCM-I- ϕ 40 to ϕ 100

Material: Cast iron
Painted



Model No.	Applicable bore size (mm)	A	AA	CA	CD	CW	E	KK	MA	RR	RS	Weight (g)
SCM-I-20	20	34	8.5	25	8	8 ^{-0.2/-0.4}	16	M8	11.5	13.4	3.1	39
SCM-I-25	25, 32	41	10.5	30	10	10 ^{-0.2/-0.4}	20	M10x1.25	14	17.1	4.5	72
SCM-I-40	40	42	14	30	10	18 ^{-0.3/-0.5}	22	M14x1.5	14	12	-	152
SCM-I-50	50, 63	56	18	40	14	22 ^{-0.3/-0.5}	28	M18x1.5	20	16	-	158
SCM-I-80	80	71	21	50	18	28 ^{-0.3/-0.5}	38	M22x1.5	27	21	-	395
SCM-I-100	100	79	21	55	22	32 ^{-0.3/-0.5}	44	M26x1.5	31	24	-	564

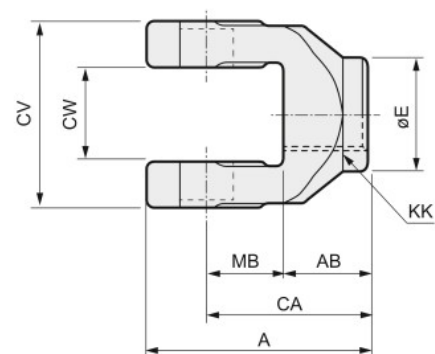
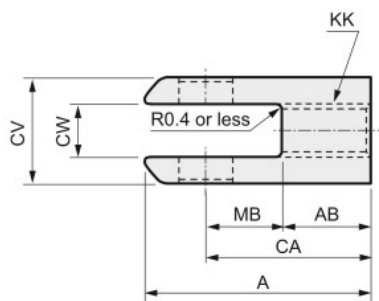
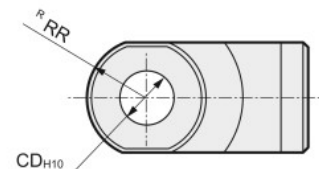
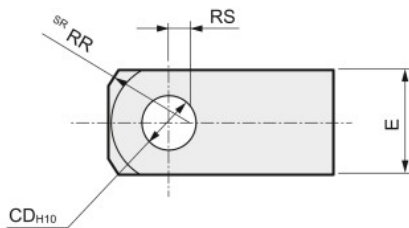
● Rod clevis

● SCM-Y- ϕ 20 to ϕ 32

Material: Steel
Chromate
treatment

● SCM-Y- ϕ 40 to ϕ 100

Material: Cast iron
Painted



Model No.	Applicable bore size (mm)	A	AB	CA	CD	CV	CW	E	KK	MB	RR	RS	Applicable pin No.	Weight (g)
SCM-Y-20	20	34	13.5	25	8	16	8 ^{+0.4/+0.2}	16	M8	11.5	13.4	3.1	SCM-P-20	46
SCM-Y-25	25, 32	41	16	30	10	20	10 ^{+0.4/+0.2}	20	M10x1.25	14	17.1	4.5	SCM-P-25	85
SCM-Y-40	40	42	16	30	10	36	18 ^{+0.5/+0.3}	22	M14x1.5	14	12	-	SCM-P-40	122
SCM-Y-50	50, 63	56	20	40	14	44	22 ^{+0.5/+0.3}	28	M18x1.5	20	16	-	SCM-P-50	258
SCM-Y-80	80	71	23	50	18	56	28 ^{+0.5/+0.3}	38	M22x1.5	27	21	-	SCM-P-80	590
SCM-Y-100	100	79	24	55	22	64	32 ^{+0.5/+0.3}	44	M26x1.5	31	24	-	SCM-P-100	909

Note: A pin and a snap ring are included.