

SCL2/SCD2 Series

How to order

● Speed controller Line type

SCL2 - 04 - H44 - ○

● In/out speed controller Inline

SCD2 - 04 - H44 - ○

Model No.

A Body size

B Compatible tube O.D.

Refer to the table at right for body size, compatible tube O.D. and flow characteristic combinations.

⚠ Precautions for model No. selection

*1 : H24 cannot be selected for SCD2. Select H42 instead.

*2 : There is no push-in fitting compatible with Item B Compatible tube O.D. $\phi 1.8$. Refer to page 894 for line types with $\phi 1.8$ diameter push-in fittings.

C Flow characteristics

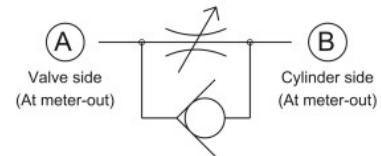
Code	Description
A Body size	
04	M5 thread equivalent
06	1/8 thread equivalent
08	1/4 thread equivalent
10	3/8 thread equivalent
B Compatible tube O.D.	
H22	$\phi 1.8$
H42	Side A: $\phi 4$ Side B: $\phi 1.8$
H24 (*1)	Side A: $\phi 1.8$ Side B: $\phi 4$
H44	$\phi 4$
H66	$\phi 6$
H88	$\phi 8$
H1010	$\phi 10$
H1212	$\phi 12$
C Flow characteristics	
Blank	Standard
F	Fine speed

Combination of body size, compatible tube O.D. and flow characteristics

		A Body size			
		04	06	08	10
B Compatible tube O.D.	H22	$\phi 1.8$	○		
	H42	$\phi 4/\phi 1.8$	○		
	H24 (*1)	$\phi 1.8/\phi 4$	○		
	H44	$\phi 4$	● ○		
	H66	$\phi 6$		● ○	●
	H88	$\phi 8$			● ●
	H1010	$\phi 10$			● ●
H1212	$\phi 12$			● ●	

- Flow characteristics "standard"
- Flow characteristics "fine speed"
- Not available

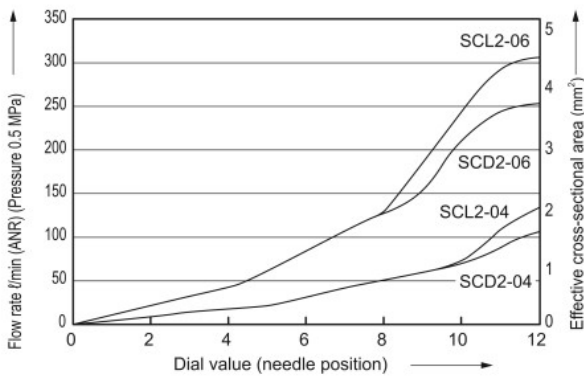
● Illustration of combination of compatible tube O.D. (H24/H42 only)



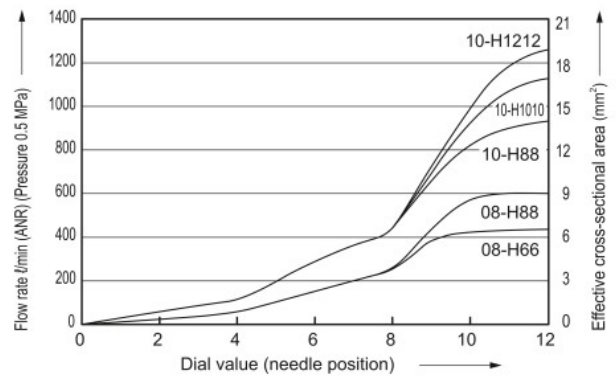
Free flow direction →
Controlled flow direction ←

Flow characteristics

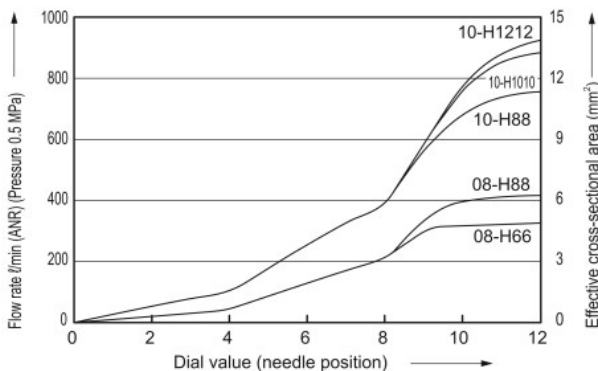
● Standard SCL2-04, SCL2-06, SCD2-04, SCD2-06



● Standard SCL2-08, SCL2-10



● Standard SCD2-08, SCD2-10



● Fine speed

