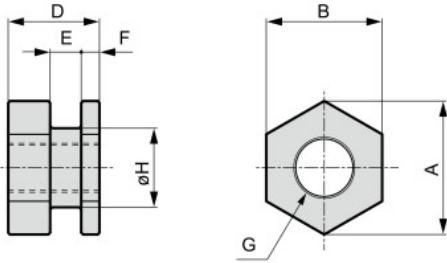


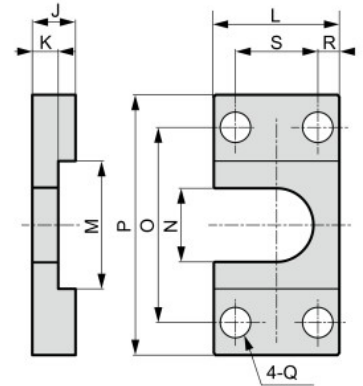
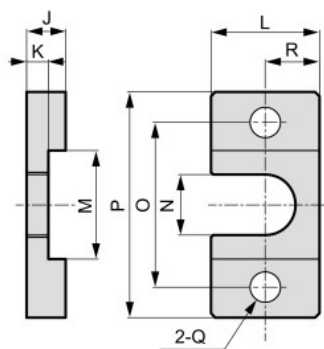


Material : Steel
Surface treatment : Nickeling

● Bracket (1)



● Bracket (2)



M3 to M18

M22 to M26

Bracket (1)

Model No.	Cylinder	A	B	D	E	F	G	H	Weight g
FK-M3	SCPD3-6, CAT-6, SMG-6	11.6	10	10	3.1 ^{+0.1} ₀	2	M3×0.5	6	4.6
FK-M4	SCPD3-10, CAT-10, SMG-10	11.6	10	10	3.1 ^{+0.1} ₀	2	M4×0.7	6	4.1
FK-M5	SCPD3-16, CAT-15, SMG-16 SSD-12-N	13.9	12	10	3.1 ^{+0.1} ₀	2	M5×0.8	8	6.2
FK-M6	SMG-20, SSD/SSD2-16-N	13.9	12	10	3.1 ^{+0.1} ₀	2	M6×1.0	8	5.7
FK-M8×1.0	CMK2-20, CMA2-20, JSK2-20, JSM2-20	21.9	19	15	5.1 ^{+0.1} ₀	3	M8×1.0	13	23
FK-M8×1.25	SMG-25, SSD/SSD2-20-N, SCM-20	21.9	19	15	5.1 ^{+0.1} ₀	3	M8×1.25	13	23.4
FK-M10	CMK2-25/32, CMA2-30, SMG-32, SSD/SSD2-25-N, SCG-32, SCM-25/32, FCD-25-N, JSK2-25/32, JSM2-30	21.9	19	15	5.1 ^{+0.1} ₀	3	M10×1.25	13	20.2
FK-M12	CMK2-40, CMA2-40, JSK2-40, JSM2-40	27.7	24	15	5.1 ^{+0.1} ₀	3	M12×1.5	18	35.7
FK-M14	SCA2-40, SSD/SSD2-32/40-N/SCG-40, SCM-40, FCD-32/40-N, JSC3-40	27.7	24	15	5.1 ^{+0.1} ₀	3	M14×1.5	18	31.2
FK-M16	CAV2-50	37	32	20	7.1 ^{+0.1} ₀	4	M16×1.5	23	81.3
FK-M18	SCA2-50/63, SSD/SSD2-50/63-N, SCM-50/63, SCG-50/63, FCD-50/63-N, JSC3-50/63	37	32	20	7.1 ^{+0.1} ₀	4	M18×1.5	23	73.1
FK-M22	SCA2-80, SSD/SSD2-80-N, JSC3-80, SCG-80, SCM-80, CAV2-75/100	53.1	46	28	12.1 ^{+0.1} ₀	7	M22×1.5	32	226
FK-M26	SCA2-100, SSD/SSD2-100-N, SCM-100, JSC3-100, SCG-100	53.1	46	28	12.1 ^{+0.1} ₀	7	M26×1.5	32	193

Bracket (2)

Model No.	Cylinder	J	K	L	M	N	O	P	Q	R	S	Weight g
FK-M3	SCPD3-6, CAT-6, SMG-6	6	3 ⁰ _{-0.1}	16	14	7	24	34	4.5	8	—	16
FK-M4	SCPD3-10, CAT-10, SMG-10	6	3 ⁰ _{-0.1}	16	14	7	24	34	4.5	8	—	16
FK-M5	SCPD3-16, CAT-15, SMG-16 SSD/SSD2-12-N	6	3 ⁰ _{-0.1}	19	16	9	26	36	4.5	9.5	—	19.6
FK-M6	SMG-20, SSD/SSD2-16-N	6	3 ⁰ _{-0.1}	19	16	9	26	36	4.5	9.5	—	19.6
FK-M8×1.0	CMK2-20, CMA2-20, JSK2-20, JSM2-20	9	5 ⁰ _{-0.1}	25	25	14	38	52	7	12.5	—	54.5
FK-M8×1.25	SMG-25, SSD/SSD2-20-N, SCM-20	9	5 ⁰ _{-0.1}	25	25	14	38	52	7	12.5	—	54.5
FK-M10	CMK2-25/32, CMA2-30, SMG-32, SSD/SSD2-25-N, SCG-32, SCM-25/32, FCD-25-N, JSK2-25/32, JSM2-30	9	5 ⁰ _{-0.1}	25	25	14	38	52	7	12.5	—	54.5
FK-M12	CMK2-40, CMA2-40	9	5 ⁰ _{-0.1}	32	32	19	50	70	9	16	—	94.5
FK-M14	SCA2-40, SSD/SSD2-32/40-N/SCG-40, SCM-40, FCD-32/40-N, JSC3-40	9	5 ⁰ _{-0.1}	32	32	19	50	70	9	16	—	94.5
FK-M16	CAV2-50	12	7 ⁰ _{-0.1}	44	42	25	62	85	11	22	—	216
FK-M18	SCA2-50/63, SSD/SSD2-50/63-N, SCM-50/63, SCG-50/63, FCD-50/63-N, JSC3-50/63	12	7 ⁰ _{-0.1}	44	42	25	62	85	11	22	—	216
FK-M22	SCA2-80, SSD/SSD2-80-N, JSC3-80, SCG-80, SCM-80, CAV2-75/100	22	12 ⁰ _{-0.1}	65	59	34	90	120	14	13.5	38	788
FK-M26	SCA2-100, SSD/SSD2-100-N, SCM-100, JSC3-100, SCG-100	22	12 ⁰ _{-0.1}	65	59	34	90	120	14	13.5	38	788