

Type A bracket series

A10655 Type A bracket



A10656 Stainless steel type A bracket



A10657 Dip-plated Type A bracket



A10658 Coated Type A bracket



A10655	Type A bracket
A10656	Stainless steel Type A bracket
A10657	Dip-plated Type A bracket
A10658	Coated Type A bracket

Pressed triangle brackets for horizontal piping

Part number A10655 Type A bracket (electrogalvanized finish)

A10656 Stainless steel Type A bracket (SUS304)

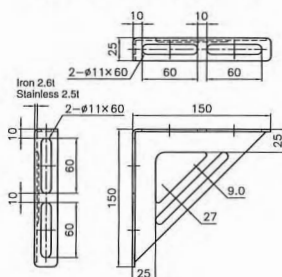
A10657 Dip-plated Type A bracket (hot-dip galvanized finish)

A10658 Coated Type A bracket (resin coated)

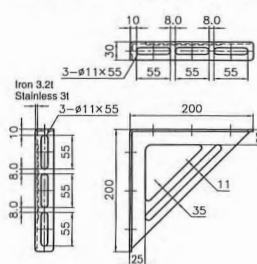
Units (mm)

Size code				Model number	Bolts used
A10655	A10656	A10657	A10658		
0010	0017	0014	0011	No. 15	$W\frac{3}{8} \cdot M10$
0024	0021	0029	0026	No. 20	$W\frac{3}{8} \cdot M10$
0039	0036	0033	0045	No. 25	$W\frac{3}{8} \cdot M10$
0043	0055	0048	0050	No. 30	$W\frac{3}{8} \cdot M10$
0058	0060	0052	0064	No. 40	$W\frac{3}{8} \cdot M10$

Type A bracket (No. 15)



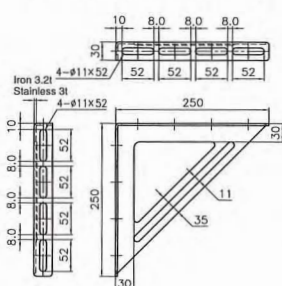
Type A bracket (No. 20)



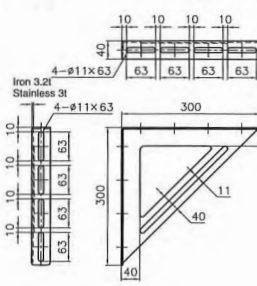
Permitted static load
(center position)

200 kg

Type A bracket (No. 25)



Type A bracket (No. 30)



Type A bracket (No. 40)

