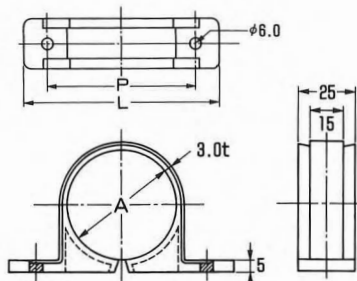


Plastic Bands

A10511 Polypropylene saddle

Polypropylene bands for raised pipes



Part number A10511 Polypropylene saddle

Units (mm)

Polypropylene saddle for SGP pipe (white)						
Size code	Size	Applicable pipe outer diameter	P	L	Applicable pedestal number	Remarks (Old size)
0575	GP10	17.3	41	62	1 to 5	G- 2
0580	GP15	21.7	41	62	1 to 5	G- 4
0594	GP20	27.2	48	67.5	6 to 7	G- 6
0607	GP25	34.0	56	79.5	8 to 9	G- 9
0611	GP32	42.7	65	90	10 to 11	G- 11
0626	GP40	48.6	75	100	12 to 13	G- 12
0645	GP50	60.5	95	119.5	14	G- 14

Polypropylene saddle for SGP pipe (ivory)						
Size code	Size	Applicable pipe outer diameter	P	L	Applicable pedestal number	Remarks (Old size)
0650	GP20	27.2	48	67.5	6 to 7	サ-6

Polypropylene saddle for copper pipe (natural)						
Size code	Size	Applicable pipe outer diameter	P	L	Applicable pedestal number	Remarks (Old size)
0664	CU15	15.88	41	62	1 to 5	T- 1
0679	CU19	19.05	41	62	1 to 5	T- 3
0683	CU20	22.22	41	62	1 to 5	T- 5
0698	CU25	28.58	48	67.5	6 to 7	T- 7
0715	CU32	34.92	56	79.5	8 to 9	T- 9
0720	CU40	41.28	65	90	10 to 11	T- 11
0734	CU50	53.98	75	100	12 to 13	T- 13

Polypropylene saddle for coated steel pipe (ivory)						
Size code	Size	Applicable pipe outer diameter	P	L	Applicable pedestal number	Remarks (Old size)
0838	PC15	25.7	48	67.5	6 to 7	PC- 6
0842	PC20	31.2	56	79.5	8 to 9	PC- 8
0857	PC25	37.6	65	90	10 to 11	PC-10
0861	PC32	46.3	75	100	12 to 13	PC-12
0556	PC40	52.2	75	100	12 to 13	PC-40

Polypropylene saddle for coated flexible pipe (white)						
Size code	Size	Applicable pipe outer diameter	P	L	Applicable pedestal number	Remarks (Old size)
0970	FT20	20	41	62	1 to 5	F-3

Polypropylene saddle for VP pipe (white)						
Size code	Size	Applicable pipe outer diameter	P	L	Applicable pedestal number	Remarks (Old size)
0819	VP20	26	48	67.5	6 to 7	C-6

Polypropylene saddle for VP pipe (beige)						
Size code	Size	Applicable pipe outer diameter	P	L	Applicable pedestal number	Remarks (Old size)
0823	VP40	48	75	100	12 to 13	A-12

Polypropylene saddle for VP pipe (gray)						
Size code	Size	Applicable pipe outer diameter	P	L	Applicable pedestal number	Remarks (Old size)
0749	VP13	18	41	62	1 to 5	V- 2
0753	VP16	22	41	62	1 to 5	V- 4
0768	VP20	26	48	67.5	6 to 7	V- 6
0772	VP25	32	56	79.5	8 to 9	V- 8
0787	VP30	38	65	90	10 to 11	V- 10
0791	VP40	48	75	100	12 to 13	V- 12
0804	VP50	60	95	119.5	14	V- 14

Polypropylene saddle for VP/drain pipe (ivory)						
Size code	Size	Applicable pipe outer diameter	P	L	Applicable pedestal number	Remarks (Old size)
1215	VP20	26	48	67.5	6 to 7	
1220	VP25	32	56	79.5	8 to 9	
1234	VP30	38	65	90	10 to 11	
1249	VP40	48	75	100	12 to 13	

