

The Relationship between Interchangeable Heads and Torque Wrenches

Tohnichi's interchangeable head wrenches have specific diameter round ends that fit into corresponding head base openings. Head and wrench model names include the diameter sizes so heads can be matched to wrenches that will accept those heads.

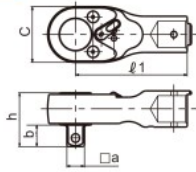
For example: SH15D×17 will fit on CL100N×15D

A variety of different head types (SH, RH, QH, RQH, FH, DH, AH and SH-N) can be used on one wrench or different types of wrenches such as CL (for tightening) and CEM3-G (for inspection) can use the same head that has the corresponding diameter size.

QH

Ratchet Head

RoHS



QH15D

As the QH type ratchet heads need only small swing for tightening, they suit for operations in narrow spaces.

Head Size	Model	Dimensions			
		Sq. Drive a [mm]	Outside Width c [mm]	h [mm]	b [mm]
8D	QH8D	6.35	23	17.5	7.5
10D	QH10D-1/4		26	18.5	
	QH10D			22	
12D	QH12D	9.53	32	25.6	11
15D	QH15D-3/8		37.5	30.5	
	QH15D			33.5	14
19D	QH19D	12.7	40	38.4	15.4
22D	QH22D-1/2	19.05	51	41.5	15.5
	QH22D			46.5	20.5
27D	QH27D		70	49.7	21.5
32D	QH32D	25.4	74	55.7	26.5

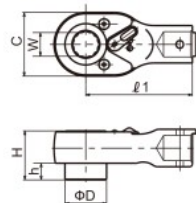
Note

- For the model having 25.4mm square drive, use a through-hole socket.
QH15D-3/8 Tmax 100N·m
QH22D-1/2 Tmax 280N·m
- Ratchet protective cover is available. Refer to page 49.

RQH

Female Ratchet Head

RoHS



RQH15D×17

As the RQH type ratchet heads need only small swing for tightening, they suit for operations in narrow and low ceiling spaces.

Head Size	Model (Body Size × Width)	Dimensions			
		D [mm]	Outside Width C [mm]	H [mm]	h [mm]
12D	RQH12D×12	20.5	32	24.1	10
	RQH12D×14				
15D	RQH15D×14	24.5	37.5	29	
	RQH15D×17				
	RQH19D×17				
19D	RQH19D×19	31	45	28	
	RQH19D×22				
22D	RQH22D×22	35.2	51	35	
	RQH22D×24				

Ratchet Protective Cover for QH/RQH

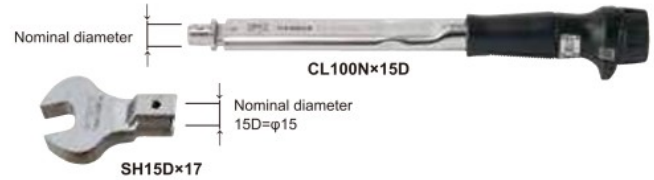
Fit on your Tohnichi Ratchet Head to protect your work



872 with QH12D

870

Part #	Applicable Interchangeable Head
870	QH8D
871	QH10D
872	QH12D/RQH12D
874	QH15D/RQH15D
875	QH19D
876	RQH19D
878	QH22D/RQH22D

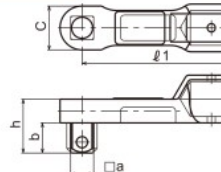


SH15D×17

DH

Square Drive Head

RoHS



DH15D

The DH square drive heads are the standard interchangeable head. They are useful when tightening a large number of matching screws with a common torque wrench. It is recommended to keep one set. They are used with sockets.

Head Size	Model	Dimensions			
		Sq. Drive a [mm]	Outside Width c [mm]	h [mm]	b [mm]
10D	DH10D	9.53	18	22.5	13
12D	DH12D			23	
15D	DH15D	12.7	22	29.5	16.5
19D	DH19D			24	
22D	DH22D	19.05	34	43.3	23.5
27D	DH27D			42	
32D	DH32D	25.4	50	58.5	30.25

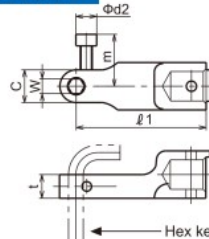
Note

DH32D is a through hole type.

HH

Hex Head

RoHS



HH10D×6

HH hex-head is for hexagon socket head bolts. A hex key can be inserted.

The HH hex-head is for hex. socket head cap screws.

Head Size	Model (Body Size × Width)	Dimensions					
		Outside Width C [mm]	t [mm]	m [mm]	φd2 b [mm]		
8D	HH8D	12	14.5	-	-		
10D	HH10D×5	11	8	19	7		
	HH10D×6	12					
	HH10D×8	15					
12D	HH12D×5	11	10			21	8.5
	HH12D×6	14					
	HH12D×8	15					
	HH12D×10	17					
15D	HH15D×8	14	13	23	10		
	HH15D×10	17					
	HH15D×12	20					
	HH15D×14	21.5					
	HH19D×10	17					
19D	HH19D×12	21.5	20	26	10		
	HH19D×14	23					
	HH19D×17	27					
	HH19D×19	29					
22D	HH22D×12	19.5	17	26	10		
	HH22D×14	27					
	HH22D×17	30					
	HH22D×19	32					
	HH22D×22	35					

Note

- To be used with hex. key inserted.
- HH8D is not used with hex. key but interchangeable bit.
- Insertion of HH10D×5 and HH10D×6 are hexagon. Others are double hexagon.



HH8D

Bits are sold separately.
Refer to page 10.