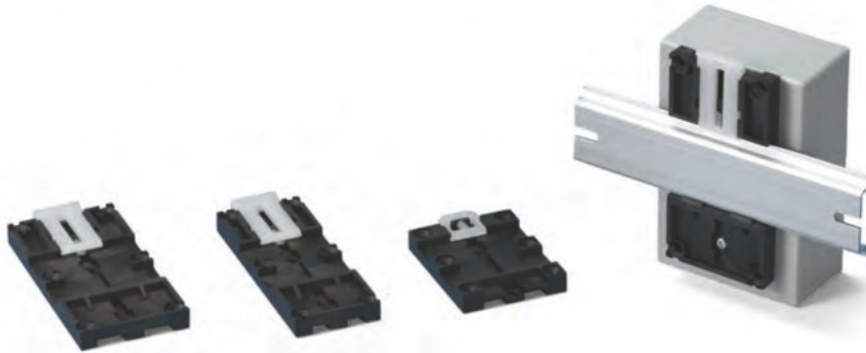


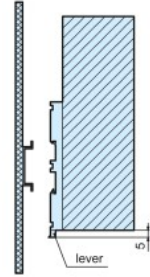
DRA series

DIN-RAIL MOUNTING BASE



■ **NOTE**

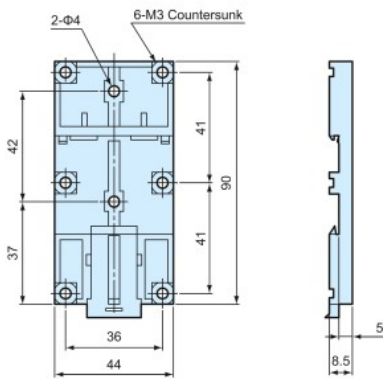
Before installation, please ensure that the lever is not fully hidden behind the enclosure



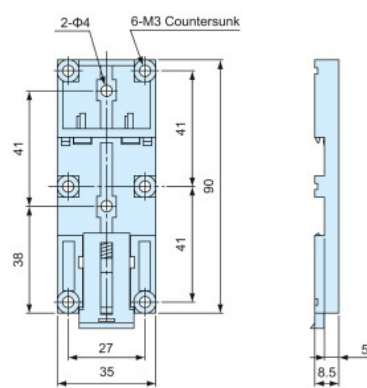
- For installation of enclosures, PCB and other parts onto a DIN rail.
- Simple installation and removal via the pull lever.

DRA dimensions

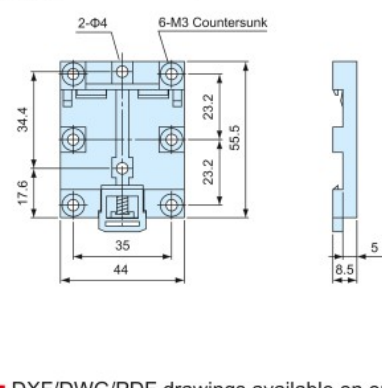
DRA-1



DRA-2



DRA-3



Technical Data

Max load : 5kg

■ DXF/DWG/PDF drawings available on our website.

Product no. / Dimensions

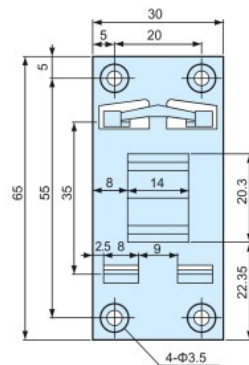
Product no.	Material (body)	Material (lever)	Color	Weight (g)
DRA-1	PPE : SB UL94V-1	Nylon 66 UL94V-2	Black : White	16.4
DRA-2	PPE : SB UL94V-1	Nylon 66 UL94V-2	Black : White	14.5
DRA-3	PPE : SB UL94V-1	Nylon 66 UL94V-2	Black : White	10.4

DRT series

DIN-RAIL MOUNTING BASE



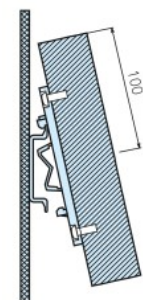
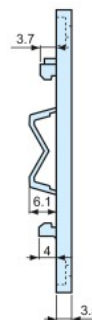
DRT dimensions



■ DXF/DWG/PDF drawings available on our website.

■ **NOTE**

Before installation, please ensure that the length (from top) of the enclosure is equal to, or less than 100mm from the center of the mounting base.



- For installation of enclosures, PCB and other parts onto a DIN rail.
- Simple installation and removal by tilting the case at an angle and sliding it in/out.

Product no. / Dimensions

Product no.	Material	Color	Weight (g)
DRT-1	PC/ABS UL94V-0	Light gray	7.3

Technical Data

Max load : 1kg
Operating temperature: -20°C ~ +70°C