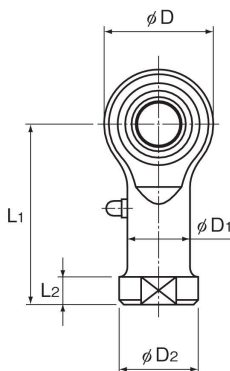


## Model PHS (Female Threading Type)



Model No.	Outer dimensions			Threaded S <sub>1</sub> JIS Class 2	Holder Dimensions			
	Length L	Diameter D	Width B <sub>1</sub> 0 -0.1		W 0 -0.2	D <sub>1</sub>	D <sub>2</sub>	B ±0.1
PHS 5	35	16	8	M5×0.8	9	9	11	6
PHS 6	39	18	9	M6×1	11	10	13	6.75
PHS 8	47	22	12	M8×1.25	14	12.5	16	9
PHS 10	56	26	14	M10×1.5	17	15	19	10.5
PHS 12	65	30	16	M12×1.75	19	17.5	22	12
PHS 14	74	34	19	M14×2	22	20	25	13.5
PHS 16	83	38	21	M16×2	22	22	27	15
PHS 18	92	42	23	M18×1.5	27	25	31	16.5
PHS 20	100	46	25	M20×1.5	30	27.5	34	18
PHS 22	109	50	28	M22×1.5	32	30	37	20
PHS 25	124	60	31	M24×2	36	33.5	42	22
PHS 30	145	70	37	M30×2	41	40	50	25

### [Material]

Holder : S35C (Chromate treatment)

Spherical inner ring : SUJ2, 58 HRC or higher

( Hard chrome plated except for the inner surface of the inner ring )

Bush : copper alloy

### [Fitting with the Shaft]

Condition	Dimensional tolerance of the shaft
Normal load	h7
Indeterminate load	p6

### Model number coding

**PHS10 L**  
 Model number |  
 Left-hand thread