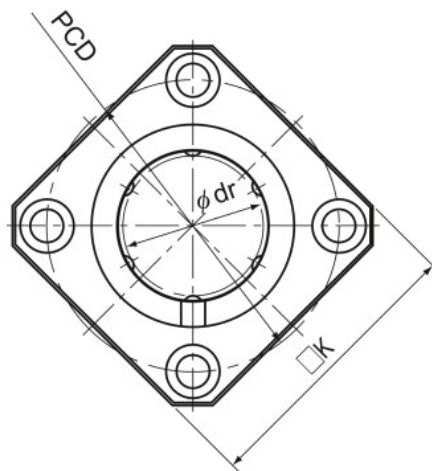


Model LMK-M (Stainless Steel Type)



Model LMK-M

| Model No. | Ball rows | Main dimensions | | | | | | | |
|-----------|-----------|-------------------------|-------------|----------------|-------------|--------|-----------|-----------------|-----------|
| | | Inscribed bore diameter | | Outer diameter | | Length | | Flange diameter | |
| | | dr | Tolerance | D | Tolerance | L | Tolerance | D ₁ | Tolerance |
| LMK 6M | 4 | 6 | 0 -0.009 | 12 | 0 -0.011 | 19 | 0 -0.2 | 28 | 0 -0.2 |
| LMK 8SM | 4 | 8 | | 15 | | 17 | | 32 | |
| LMK 8M | 4 | 8 | | 15 | | 24 | | 32 | |
| LMK 10M | 4 | 10 | | 19 | 29 | 39 | | | |
| LMK 12M | 4 | 12 | 21 | 0 -0.013 | 30 | 42 | | | |
| LMK 13M | 4 | 13 | 23 | | 32 | 43 | | | |
| LMK 16M | 5 | 16 | 28 | 37 | 48 | | | | |
| LMK 20M | 5 | 20 | 0 -0.010 | 32 | 0 -0.016 | 42 | 54 | | |
| LMK 25M | 6 | 25 | | 40 | | 59 | 62 | | |
| LMK 30M | 6 | 30 | | 45 | | 64 | 74 | | |

Note) Since this model contains a synthetic resin retainer, do not use it at temperature exceeding 80°C.
If requiring a type equipped with a seal, indicate it when placing an order.

(Example) LMK25M UU

└────────── Seal attached on both ends of the nut