

# 5.0 MPa Pilot Operated 3 Port Solenoid Valve

## VCH400 Series

For Air



### Stable responsiveness

Response time dispersion within  $\pm 2$  ms

Service life: 10 million cycles

**Non-collision construction** between the iron cores keeps equipment abrasion free.

Improved responsiveness when switching off.  
Reduced dispersion construction

Improved durability by applying a **special surface treatment** to the sliding parts.

Unnecessary volume inside the pilot chamber is reduced.

High speed response  
Reduced dispersion

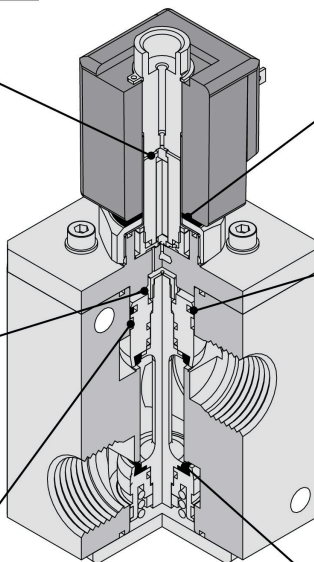
Using NSF-H1-certified grease on the guide ring (sliding part).  
Special treatment containing **fluororesin is applied** to the body side sliding face.

Use of **shock absorbing rubber**, resulting in protection of the pilot valve and electric parts.

**Special fluororesin sealant** is adopted for the sliding part.

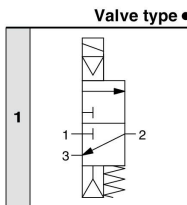
Stable responsiveness after extended disuse.  
No likely to subject to a pressure.

Improved durability under a high pressure environment with a **polyurethane elastomer** poppet



### How to Order

VCH410 - 1 D - 06 G -



#### Voltage

1	100 VAC
2	200 VAC
3	110 VAC
4	220 VAC
5	24 VDC
6	12 VDC

\* Consult with SMC for other voltages.

#### CE-compliant

NH	—
Q	CE-compliant

**Thread type**  
(Conforming to ISO1179-1 on the pneumatic/hydraulic G thread)

#### Electrical entry

D	DIN connector
DL	DIN connector with light
DO	Without DIN connector, with gasket

\* A surge voltage suppressor is integrated inside the coil as a standard feature.



#### Port size

04	1/2
06	3/4
10	1