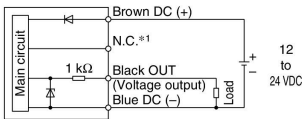


# PSE570 Series

## Internal Circuits and Wiring Examples

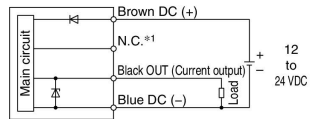
### PSE57□-□

Voltage output type  
1 to 5 V  
Output impedance  
Approx. 1 k $\Omega$



### PSE57□-□-28

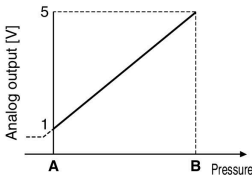
Current output type  
4 to 20 mA  
Allowable load impedance  
500  $\Omega$  or less (at 24 VDC)  
100  $\Omega$  or less (at 12 VDC)



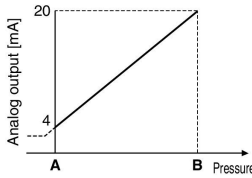
\*1 The unconnected terminals are used in SMC, so please do not connect them.

## Analog Output

### 1 to 5 VDC

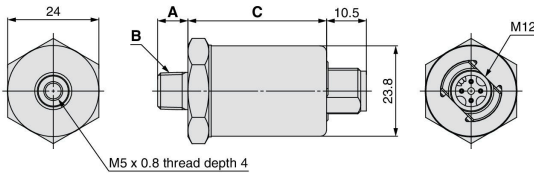


### 4 to 20 mA DC



Model	Rated pressure range	A	B
PSE570	0 to 1 MPa	0 MPa	1 MPa
PSE573	-100 to 100 kPa	-100 kPa	100 kPa
PSE574	0 to 500 kPa	0 kPa	500 kPa
PSE575	0 to 2 MPa	0 MPa	2 MPa
PSE576	0 to 5 MPa	0 MPa	5 MPa
PSE577	0 to 10 MPa	0 MPa	10 MPa

## Dimensions

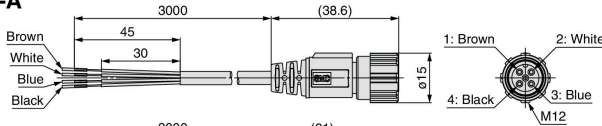


Part no.	A	B	C
PSE570/573/574-01	8	R1/8	36.5
PSE570/573/574-02	12	R1/4	36.5
PSE575/576/577-02	12	R1/4	39.7

[mm]

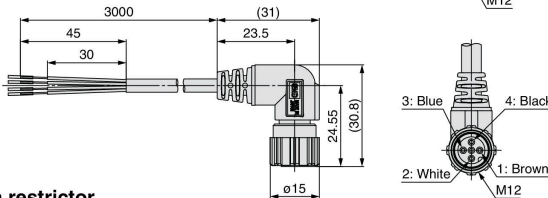
## Lead wire and M12 connector

### ZS-37-A



Pin no.	Lead wire color	Description
1	Brown	DC (+)
2	White	N.C.*1
3	Blue	DC (-)
4	Black	OUT1

### ZS-37-B

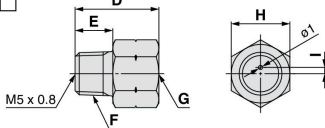


\*1 The unconnected terminals are used in SMC, so please do not connect them.

Part no.	Description
ZS-37-A	Straight type 3 m
ZS-37-B	Right angle type 3 m

## Adapter with restrictor

### ZS-31-X□□□

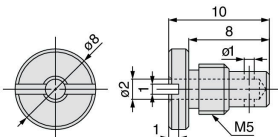


Part no.	D	E	F	G	H	I
ZS-31-X188	20	9	R1/8	Rc1/8	14	1.5
ZS-31-X175	29	13	R1/4	Rc1/4	17	1.6

[mm]

## Orifice

### ZS-48-A



\* If it is expected that the pressure, such as the water hammer or surge pressure will fluctuate rapidly, refer to the Precautions in the Operation Manual on the SMC website (<http://www.smccworld.com>).