

Related Products: Multi-tube Holder **TM Series**

RoHS

- Easy arrangement of tubing
Easy tube insertion and firm fixation
- Possible to separate options depending on number of connection tubes
- Use of flame resistant resin (Equivalent to UL-94 standard V-0)



Applicable Tubing

| | |
|-----------------|--|
| Tubing material | Nylon, Soft nylon, Polyurethane, other soft plastic tubing |
| Tubing O.D. | ø4, ø6, ø8, ø10, ø12 |

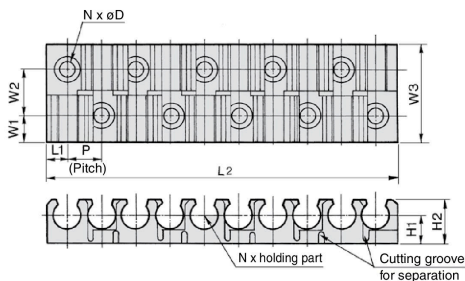
Model

| Applicable tubing O.D. (mm) | Model | No. of connecting tubes (Max.) | | |
|-----------------------------|-------|--------------------------------|---|----|
| | | 6 | 8 | 12 |
| 4 | TM-04 | | | ● |
| 6 | TM-06 | | ● | ● |
| 8 | TM-08 | | ● | |
| 10 | TM-10 | ● | | |
| 12 | TM-12 | ● | | |

Specifications

| | | |
|---------------------|--|----------------|
| Ambient temperature | -20 to 60°C | |
| Material | Flame resistant polypropylene (Equivalent to UL-94 standard V-0) | |
| Color | Black | |
| Accessory | For mounting Cross recessed head countersunk tapping screw (Zinc chromated) | |
| | Model | No. of tubings |
| | TM-04 | 4 |
| | TM-06 | 4 |
| | TM-08 | 4 |
| | TM-10 | 4 |

Dimensions: Multi-tube Holder



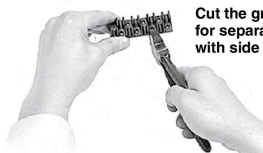
| Applicable tubing O.D. (mm) | Model | N (No. of holding parts) | P | L ₁ | L ₂ | W ₁ | W ₂ | W ₃ | H ₁ | H ₂ | øD | Mounting screw (Nominal x Length) |
|-----------------------------|-------|--------------------------|------|----------------|----------------|----------------|----------------|----------------|----------------|----------------|-----|-----------------------------------|
| 4 | TM-04 | 12 | 6 | 3.25 | 72.5 | 4.5 | 8 | 17 | 5 | 7.5 | 2.2 | 2 x 6 |
| 6 | TM-06 | 12 | 7.5 | 4.5 | 91.5 | 5.5 | 10 | 21 | 6.5 | 10 | 2.8 | 2.6 x 8 |
| 8 | TM-08 | 8 | 9.5 | 5.5 | 77.5 | 6 | 11 | 23 | 7.5 | 12 | 2.8 | 2.6 x 8 |
| 10 | TM-10 | 6 | 12.5 | 7.5 | 77.5 | 6.5 | 12 | 25 | 8.8 | 14.3 | 3.2 | 3 x 8 |
| 12 | TM-12 | 6 | 15 | 9 | 93 | 6.5 | 12 | 25 | 9.8 | 16.3 | 3.2 | 3 x 8 |

How to Use

⚠ Caution

1. Cut the multi-tube holder depending on number of tubes to be connected.

<Cutting method>



Cut the groove for separation with side cutters.

2. Install the multi-tube holder to the equipment with cross-recessed head, counter-sunk tapping screw.
3. Lay the tube across the gripper and push on the tube.
4. For removing the tubes, pull up the tubes from the gripper.