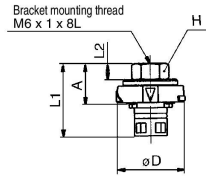


4 Plug / Cap

Plug: KBP



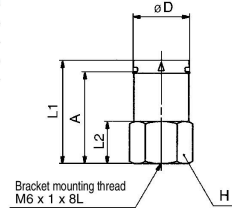
Model	H width across flats	D	L1	L2	A	Weight (g)
KBP1	8	16.8	29.5	11.5	19.0	5.6
KBP2	10	21.0	23.0	5.0	12.5	6.8
KBP3	14	28.6	25.5		14.0	13.4
KBP4	19	30.4	27.0		15.0	24.0



Cap: KBC



Model	H width across flats	D	L1	L2	A	Weight (g)
KBC1	14	13.6	30.0	13.0	26.5	23.4
KBC2	17	17.6	32.5		28.5	37.0
KBC3	19	25.2	35.5	14.0	31.5	46.7
KBC4	24	27.0	34.0	15.0	29.5	74.4



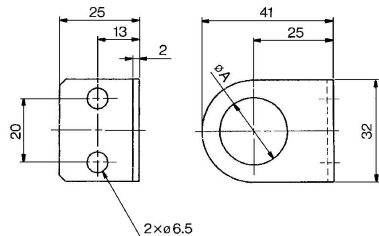
5 Bracket

Bracket: KBX



Model	A	Applicable model	Weight (g)
KBX6	7	KBP, KBC	27.5
KBX12	13	KBE1-04	26.1
KBX14	15	KBE1-06, KBE2-06	25.4
KBX16	17	KBE2-08, KBE3-08	24.4
KBX20	21	KBE2-10, KBE3-10	22.6
KBX22	23	KBE3-12, KBE4-12	21.6

* In the case of KBX6, use the enclosed mounting screws designed for KBP (plug) and KBC (cap).
Screw size: Cross recessed round head screw (M6 x 1 x 8L)
Screw color: Black



KQ2

KQB2

KS
KX

KM

KF

M

H/DL
L/LL

KC

KK

KK130

DM

KDM

KB

KR

KA

KQG2

KG

KFG2

MS

KKA

KP

LQ

MQR

T

IDK