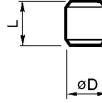


Plug: DP



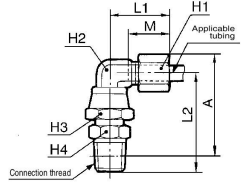
Applicable fitting (mm)	Model	L	øD	Weight (g)
4	DP-04	8	5.6	0.2
6	DP-06		7.6	0.5
8	DP-08		9.6	0.8
10	DP-10		11.6	1.2
12	DP-12		13.6	1.6



Swivel Elbow: L



Applicable tubing O.D. (mm)	Connection thread R	Model	H1 (width across flats)	H2 (width across flats)	H3 (width across flats)	H4 (width across flats)	L1	L2	M	A*	Effective area (mm ²)	Weight (g)
4	1/8	L04-01	10	10	14	10	21.8	30	15	32.7	3.5	33
	1/4	L04-02				14		34.4		34.7		40
6	1/8	L06-01	12	10	14	10	21.8	30	16	33.8	9	36
	1/4	L06-02				14		34.4		35.8		43
	3/8	L06-03				17		35.8		37.5		55
	1/2	L06-04				22		37.5		39.2		67
8	1/8	L08-01	14	12	17	12	23.3	31	16	36	19	46
	1/4	L08-02				14		35.4		37.8		52
	3/8	L08-03				17		36.8		39.7		61
	1/2	L08-04				22		38.4		41.7		76
10	1/4	L10-02	17	14	19	17	23.3	37.8	17	42.4	31	78
	3/8	L10-03				22		39.8		43.5		96
	1/2	L10-04				27		41		44.9		118
	3/4	L10-05				32		43		46.7		141
12	1/4	L12-02	19	17	22	17	24.3	39.8	17	45.6	43	86
	3/8	L12-03				22		43		46.7		94
	1/2	L12-04				27		44.9		48.5		118
	3/4	L12-05				32		46.7		50.3		141

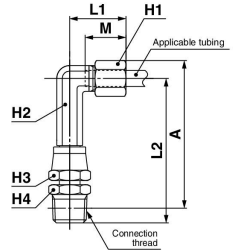


* Reference dimensions after R thread installation.

Swivel Extended Elbow: LL



Applicable tubing O.D. (mm)	Connection thread R	Model	H1 (width across flats)	H2 (width across flats)	H3 (width across flats)	H4 (width across flats)	L1	L2	M	A*	Effective area (mm ²)	Weight (g)
4	1/8	LL04-01	10	10	14	10	21.8	50	15	52.7	3.5	45
	1/4	LL04-02				14		54.4		54.7		53
6	1/8	LL06-01	12	10	14	10	21.8	51	16	54.8	9	47
	1/4	LL06-02				14		55.4		56.8		44
	3/8	LL06-03				17		56.8		58.5		66
	1/2	LL06-04				22		58.4		60.7		89
8	1/8	LL08-01	14	12	17	12	23.3	52	16	57	19	63
	1/4	LL08-02				14		56.4		59.8		68
	3/8	LL08-03				17		57.8		60.7		77
	1/2	LL08-04				22		59.8		62.7		98
10	3/8	LL10-03	17	14	19	17	23.3	59.8	17	64.4	31	98
	1/2	LL10-04				22		63		65.5		117
	3/4	LL10-05				27		65.4		67.8		141
	1/2	LL10-06				27		67.8		70.0		165
12	3/8	LL12-03	19	17	22	17	24.3	62.8	17	68.5	43	129
	1/2	LL12-04				22		66		69.7		153
	3/4	LL12-05				27		68.8		71.0		177
	1/2	LL12-06				27		71.0		73.2		201



* Reference dimensions after R thread installation.

- KQ2
- KQB2
- KS
- KX
- KM
- KF
- M
- H/DL
- L/LL
- KC
- KK
- KK130
- DM
- KDM
- KB
- KR
- KA
- KQG2
- KG
- KFG2
- MS
- KKA
- KP
- LQ
- MQR
- T
- IDK