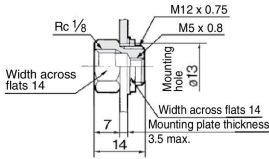


**M5 Series**

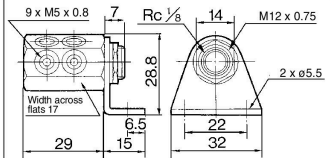
**Bulkhead Reducer: M-5ER**



For the plate thickness 3.5 to 6 mm, give the plate tapping M12 x 0.75, and then screw-in.

Weight: 12 g

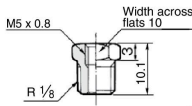
**Manifold: M-5M**



Panel mounting plate thickness max. 3.5 mm  
For the plate thickness 3.5 to 6 mm, give the plate tapping M12 x 0.75, and then screw-in.

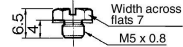
Weight: 59 g

**Bushing: M-5B**



Weight: 5.8 g

**Plug: M-5P**



Weight: 1.3 g

**⚠ Precautions**

- Be sure to read this before handling the products.
- Refer to back page 50 for Safety Instructions and pages 13 to 17 for Fittings and Tubing Precautions.

**Tightening of M3/M5 Threads**

**⚠ Caution**

1. Tighten by hand, and give it an additional turn with a wrench.  
Please check the number of tightening revolutions using the table below.  
If tightened excessively, thread portion may be damaged and gasket may be deformed. This will cause air leakage. On the contrary, if tightened insufficiently, thread may loosen causing air leakage.

Thread	Model	Number of tightening rotations
M3	M-3AU-□	Approx. 1/4 rotations
	M-3N	
	M-3P	
	M-3ALU-□	Approx. 1/2 rotations
	M-3UL	
M-3UT		
M5	M-5AN-□	Approx. 1/6 to 1/4 rotations (Note)
	M-5AU-□	
	M-5H-□	
	M-5J	
	M-5N	
	M-5UN	
	M-5P	
	M-5ALN-6	Approx. 1/2 rotations (Note)
	M-5ALU-6	
	M-5ALHN-6	
	M-5ALHU-6	
	M-5HL-□	
	M-5HLH-□	
	M-5ALN-4	
	M-5ALU-3,4	
	M-5ALHN-4	
	M-5ALHU-3,4	
M-5UL		
M-5UT		

(Note) As a guideline, the tightening torque should be 1 to 1.5 N·m.

**Use of Tube with Hose Nipple**

**⚠ Caution**

1. Cut the tube perpendicularly to the tube axis to a little longer than required length. (Use tube cutter "TK-1", "TK-2" or "TK-3".)
2. Pass the tube through the cap nut.
3. Push the tube until it comes to the end of the barb portion, or it may cause air leakage or hose releasing.
4. Tighten the cap nut firmly by hand on the fitting.

**Use of Tube with Barb Fitting**

**⚠ Caution**

1. Cut the tube perpendicularly to the tube axis to a little longer than required length. (Use tube cutter "TK-1", "TK-2" or "TK-3".)
2. Push the tube until it comes to the end of the barb portion, or it may cause air leakage or release hose.

KQ2

KQB2

KS  
KX

KM

KF

M

H/DL  
L/LL

KC

KK

KK130

DM

KDM

KB

KR

KA

KQG2

KG

KFG2

MS

KKA

KP

LQ

MQR

T

IDK