

# Metric Size One-touch Fittings **KQ2 Series**

Applicable Tubing: Metric Size, Connection Thread: M, R, Rc

## Dimensions

### Double Branch "Y": KQ2UD (Sealant)

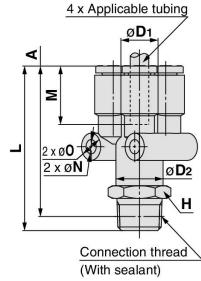
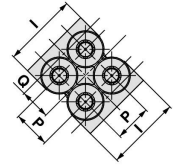


Applicable tubing O.D. (mm)	Connection thread R	Model	H (Width across flats)	Note)													Effective area (mm <sup>2</sup> )	Min. port size	Weight (g)
				øD1	øD2	L	I	A*	M	P	Q	øO	øN	Nylon	Urethane				
ø4	1/8	KQ2UD04-01-S	12	8.2	10.4	36.7	16.6	33.6	13.3	8.2	6.8	6	3.2	4.2	4.2	5.4	11.7		
	1/4	KQ2UD04-02-S	14	8.2	10.4	41.1	16.6	36.4	13.3	8.2	6.8	6	3.2	4.2	4.2	5.4	20.6		
ø6	1/8	KQ2UD06-01-S	14	10.4	13.2	39.5	21	36.4	13.3	10.4	8.2	6	3.2	13.4	10.6	6	16.4		
	1/4	KQ2UD06-02-S	14	10.4	13.2	43.9	21	39.2	13.3	10.4	8.2	6	3.2	13.4	10.6	7.3	21.6		

□/A: Brass, N: Brass + Electroless nickel plated

\* Reference dimensions after installation of R thread

Note) øD1 is maximum diameter.

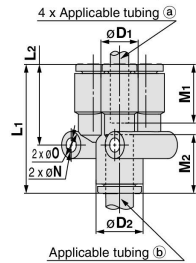
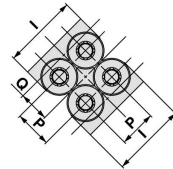


### Different Diameter Double Union "Y": KQ2UD



Applicable tubing O.D. (mm)		Model	Note)		L <sub>1</sub>	L <sub>2</sub>	P	I	M <sub>1</sub>	M <sub>2</sub>	Q	øO	øN	Effective area (mm <sup>2</sup> )	Min. port size	Weight (g)	
(a)	(b)		øD1	øD2													
ø4	ø6	KQ2UD04-06A	8.2	10.4	29.2	18.2	8.2	16.6	13.3	13.3	6.8	6	3.2	4.2	4.2	3	5.4
ø6	ø8	KQ2UD06-08A	10.4	13.2	32	20.5	10.4	21	13.3	14.2	8.2	6	3.2	13.4	10.6	4.5	8.1

Note) øD1, øD2 are maximum diameters.



KQ2

KQB2

KS  
KX

KM

KF

M

H/DL  
L/LL

KC

KK

KK130

DM

KDM

KB

KR

KA

KQG2

KG

KFG2

MS

KKA

KP

LQ

MQR

T

IDK