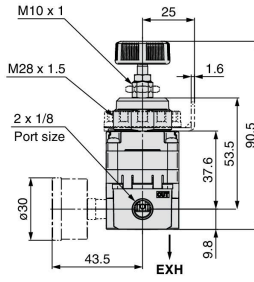
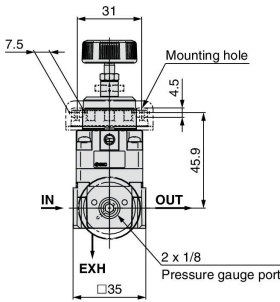
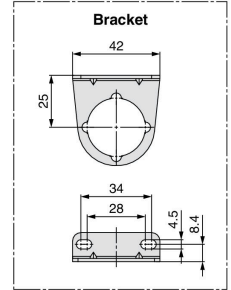
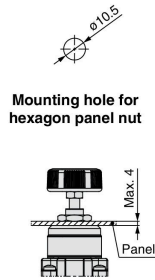
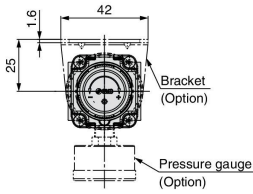


# Regulator *IR1200-A/2200-A/3200-A Series*



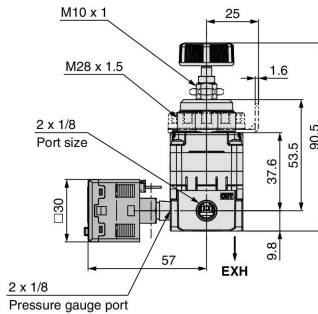
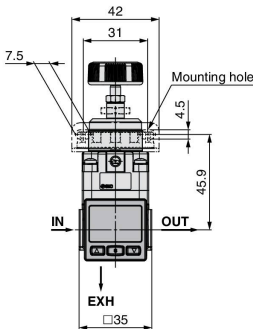
## Dimensions

### Basic type (Knob): IR12□0-01□-A



When connecting to the EXH port, contact your SMC sales representative separately.

### With digital pressure switch: IR12□0-01□E□-A



ARJ
AR425 to 935
ARX
AMR
ARM
ARP
IR□-A
IR
IRV
VEV
SRH
SRP
SRF
ITV
IC
ITVH
ITVX
PVQ
VY1
VBA
VBAT
AP100