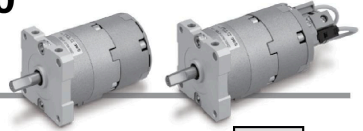


Free Mount Type Rotary Actuator With Angle Adjuster/Vane Type

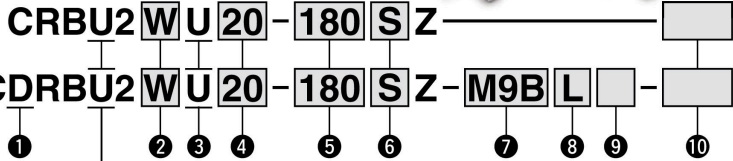
RoHS

CRBU2WU Series

Size: 10, 15, 20, 30, 40



How to Order



Free mount type*

① With auto switch

(With auto switch unit and built-in magnet)
* Refer to page 99 when the auto switch unit is needed separately.

② Shaft type

Symbol	Shaft-end shape
W	Single flat*
J**	Round shaft

* A key is used for size 40.
** J is made to order.

③ With angle adjuster unit

* Refer to page 99 when the angle adjuster unit is needed separately.

④ Size

10
15
20
30
40

⑤ Rotating angle

Single vane	90	90°
	180	180°
Double vane	90	90°
	100	100°

⑥ Vane type

S	Single vane
D	Double vane

⑦ Number of auto switches

S	1 pc.*
Nil	2 pcs.**

* S: A right-hand auto switch is shipped.
** Nil: A right-hand switch and a left-hand switch are shipped.

⑧ Auto switch

Nil	Without auto switch (Built-in magnet)
M	Without M9 type auto switch (Built-in magnet)

* For applicable auto switch model, refer to the table below.
** The operating range and hysteresis of the D-M9□ are different from those of the other auto switches. For details, refer to page 102.

⑨ Electrical entry/Lead wire length

Nil	Grommet/Lead wire: 0.5 m
M	Grommet/Lead wire: 1 m
L	Grommet/Lead wire: 3 m
CN	Connector/Without lead wire
C	Connector/Lead wire: 0.5 m
CL	Connector/Lead wire: 3 m

* Connectors are available only for the R73, R80, T79.
** Lead wire with connector part nos.
D-LC05: Lead wire 0.5 m
D-LC30: Lead wire 3 m
D-LC50: Lead wire 5 m

Refer to pages 102 to 106 for actuators with auto switches.

- Operating range and hysteresis
- How to change the auto switch detecting position
- Auto switch mounting
- Auto switch adjustment

⑩ Made to Order

For details, refer to the table below.



Made to Order

(For details, refer to pages 84 to 98.)

Applicable Auto Switches/Refer to pages 797 to 850 for further information on auto switches.

Applicable size	Type	Special function	Electrical entry	Indicator light	Wiring (Output)	Load voltage		Auto switch model		Lead wire type	Lead wire length [m]					Pre-wired connector	Applicable load	
						DC	AC	Perpendicular	In-line		0.5 (Nil)	1 (M)	3 (L)	5 (Z)	None (Nil)			
For 10, 15	Solid state auto switch	—	Grommet	Yes	3-wire (NPV) 3-wire (PNP) 2-wire	5 V, 12 V	—	M9NV M9N M9PV M9P	Oilproof heavy-duty cord	●	●	●	○	○	○	IC circuit	Relay, PLC	
					12 V	—	M9BV M9B S99V S99	●		●	●	○	○	○				
					5 V, 12 V	—	S9PV S9P	●		●	●	○	○	○				
	Reed auto switch	—	Grommet	No	2-wire	5 V, 12 V	5 V, 12 V, 24 V	—	90	Vinyl coated cord 3-wire/heavy-duty cord	●	●	●	○	○	○	IC circuit	Relay, PLC
					5 V, 12 V, 100 V	5 V, 12 V, 24 V, 100 V	—	90A	●		●	●	○	○	○			
					—	—	—	97	●		●	●	○	○	○			
For 20, 30, 40	Solid state auto switch	—	Grommet	Yes	3-wire (NPV) 3-wire (PNP) 2-wire	5 V, 12 V	—	M9NV M9N M9PV M9P	Oilproof heavy-duty cord	●	●	●	○	○	○	IC circuit	Relay, PLC	
					12 V	—	M9BV M9B	●		●	●	○	○	○				
					5 V, 12 V	—	S79	●		●	●	○	○	○				
	Reed auto switch	—	Connector	Yes	2-wire	12 V	—	S7P	Oilproof heavy-duty cord	●	●	●	○	○	○	IC circuit	Relay, PLC	
					—	100 V	—	T79		●	●	●	○	○	○			
					—	100 V	—	T79C		●	●	●	○	○	○			
Reed auto switch	—	Connector	No	2-wire	—	—	R73	—	●	●	●	○	○	○	IC circuit	Relay, PLC		
				—	100 V	—	R73C		●	●	●	○	○	○				
				48 V, 100 V	100 V	—	R80		●	●	●	○	○	○				
—	—	—	—	—	—	—	R80C	●	●	●	○	○	○	—	—			

* Lead wire length symbols: 0.5 m Nil (Example) R73C
3 m L (Example) R73CL
5 m Z (Example) R73CZ
None N (Example) R73CN

* Auto switches are shipped together, (but not assembled).
* Solid state auto switches marked with "○" are produced upon receipt of order.

The above may not be selected when the product comes with an auto switch or angle adjuster unit. For details, refer to pages 84, 85, 90, 91, 96.