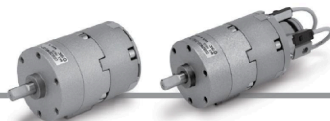


Rotary Actuator With Angle Adjuster/Vane Type

RoHS

CRB2□WU Series

Size: 10, 15, 20, 30, 40



How to Order

CRB2 **B** **W** **U** **20** - **180** **S** **Z** - □

With auto switch CDRB2 **B** **W** **U** **20** - **180** **S** **Z** - **M9B** **L** □ - □



1 With auto switch

(With auto switch unit and built-in magnet)
* Refer to page 99 when the auto switch unit is needed separately.

2 Mounting

Symbol	Mounting
B	Basic type
F *	Flange type

* F: Except size 40

3 Shaft type

Symbol	Shaft-end shape
W	Single flat*
J **	Round shaft

* A key is used for size 40.

** J is made to order.

4 With angle adjuster unit

* Refer to page 99 when the angle adjuster unit is needed separately.

5 Size

10
15
20
30
40

6 Rotating angle

Single vane	90	90°
	180	180°
Double vane	270	270°
	90	90°
	100	100°

7 Vane type

S	Single vane
D	Double vane

8 Auto switch

Nil	Without auto switch (Built-in magnet)
M	Without M9 type auto switch (Built-in magnet)

* For applicable auto switch model, refer to the table below.

** The operating range and hysteresis of the D-M9□ are different from those of the other auto switches. For details, refer to page 102.

9 Electrical entry/Lead wire length

Nil	Grommet/Lead wire: 0.5 m
M	Grommet/Lead wire: 1 m
L	Grommet/Lead wire: 3 m
CN	Connector/Without lead wire
C	Connector/Lead wire: 0.5 m
CL	Connector/Lead wire: 3 m

* Connectors are available only for the R73, R80, T79.

** Lead wire with connector part nos.
D-LC05: Lead wire 0.5 m
D-LC30: Lead wire 3 m
D-LC50: Lead wire 5 m

Refer to pages 102 to 106 for actuators with auto switches.

- Operating range and hysteresis
- How to change the auto switch detecting position
- Auto switch mounting
- Auto switch adjustment

10 Number of auto switches

S	1 pc.*
Nil	2 pcs.**

* S: A right-hand auto switch is shipped.

** Nil: A right-hand switch and a left-hand switch are shipped.

11 Made to Order

For details, refer to the table below.



Made to Order
(For details, refer to pages 84 to 98.)

Applicable Auto Switches/Refer to pages 797 to 850 for further information on auto switches.

Applicable size	Type	Special function	Electrical entry	Indication light	Wiring (Output)	Load voltage		Auto switch model		Lead wire type	Lead wire length [m]					Pre-wired connector	Applicable load
						DC	AC	Perpendicular	In-line		0.5 (Nil)	1 (M)	3 (L)	5 (Z)	None (Nil)		
For 10, 15	Solid state auto switch	—	Grommet	Yes	3-wire (NPV)	5 V, 12 V	—	M9NV	M9N	Oilproof heavy-duty cord	●	●	○	—	○	IC circuit	
					3-wire (PNP)			M9PV	M9P		●	●	○	—	○		
	Reed auto switch	—	Grommet	No	2-wire	12 V	—	M9BV	M9B	Oilproof heavy-duty cord	●	●	○	—	○	IC circuit	
					3-wire (NPV)	5 V, 12 V	—	S9NV	S9N		●	●	○	—	○		
For 20, 30, 40	Solid state auto switch	—	Grommet	Yes	3-wire (NPV)	5 V, 12 V	—	M9NV	M9N	Oilproof heavy-duty cord	●	●	○	—	○	IC circuit	
					3-wire (PNP)			M9PV	M9P		●	●	○	—	○		
					2-wire			M9BV	M9B		●	●	○	—	○		
					3-wire (NPV)			5 V, 12 V	—		S9NV	S9N	●	●	○		—
	Reed auto switch	—	Grommet	No	2-wire	12 V	—	S9PV	S9P	Oilproof heavy-duty cord	●	●	○	—	○	IC circuit	
					3-wire (PNP)	5 V, 12 V, 24 V, 100 V	—	T99V	T99		●	●	○	—	○		
					2-wire	100 V	—	93A	—		●	●	○	—	○		
					3-wire (NPV)	5 V, 12 V	—	93A	—		●	●	○	—	○		
	Solid state auto switch	—	Connector	Yes	3-wire (NPV)	5 V, 12 V	—	M9NV	M9N	Oilproof heavy-duty cord	●	●	○	—	○	IC circuit	
					3-wire (PNP)			M9PV	M9P		●	●	○	—	○		
					2-wire			M9BV	M9B		●	●	○	—	○		
					3-wire (NPV)			5 V, 12 V	—		S79	—	●	●	○		—
Reed auto switch	—	Connector	No	2-wire	12 V	—	S7P	—	Oilproof heavy-duty cord	●	●	○	—	○	IC circuit		
				3-wire (PNP)	5 V, 12 V	—	T79	—		●	●	○	—	○			
				2-wire	100 V	—	T79C	—		●	●	○	—	○			
				3-wire (NPV)	5 V, 12 V	—	R73	—		●	●	○	—	○			
Reed auto switch	—	Connector	Yes	2-wire	100 V	—	R73C	—	Oilproof heavy-duty cord	●	●	○	—	○	IC circuit		
				3-wire (PNP)	5 V, 12 V, 24 V, 100 V	—	R73C	—		●	●	○	—	○			
				2-wire	48 V, 100 V	100 V	R80	—		●	●	○	—	○			
				3-wire (NPV)	24 V or less	—	R80C	—		●	●	○	—	○			

* Lead wire length symbols: 0.5 m Nil (Example) R73C
3 m L (Example) R73CL
5 m Z (Example) R73CZ
None N (Example) R73CN

* Auto switches are shipped together, (but not assembled).
* Solid state auto switches marked with "○" are produced upon receipt of order.

The above may not be selected when the product comes with an auto switch or angle adjuster unit. For details, refer to pages 84, 85, 90, 91, 96.