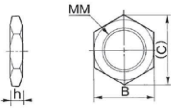


RB Series

Hexagon Nut

(2 pcs. standard equipment)



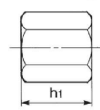
Material: Special steel
Treatment: Zinc trivalent chromated

Part no.	Dimensions			
	MM	h	B	C
RB06J	M6 x 0.75	3	8	9.2
RB08J	M8 x 1.0	4	12	13.9
RB10J	M10 x 1.0	4	14	16.2
RB14J	M14 x 1.5	6	19	21.9
RB20J	M20 x 1.5	6	27	31.2
RB27J	M27 x 1.5	6	36	41.6

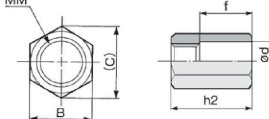
Option

Stopper nut

For basic type



For cap type

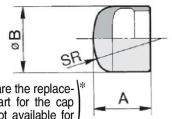


Material: Carbon steel
Treatment: Zinc trivalent chromated

Part no.	Dimensions								
	Basic type	With cap	B	C	h1	h2	MM	d	f
RB06S	—	8	9.3	5	—	M6 x 0.75	—	—	—
RB08S	RBC08S	12	13.9	6.5	23	M8 x 1.0	9	15	—
RB10S	RBC10S	14	16.2	8	23	M10 x 1.0	11	15	—
RB14S	RBC14S	19	21.9	11	31	M14 x 1.5	15	20	—
RB20S	RBC20S	27	31.2	16	40	M20 x 1.5	23	25	—
RB27S	RBC27S	36	41.6	22	51	M27 x 1.5	32	33	—

Replacement Parts

Cap



These are the replacement part for the cap type. Not available for the basic type.

Material: Polyurethane

Part no.	Dimensions		
	A	B	SR
RBC08C	6.5	6.8	6
RBC10C	9	8.7	7.5
RBC14C	12.5	12	10
RBC20C	16	18	20
RBC27C	21	25	25

Foot Bracket for Shock Absorber

Available for the foot mounting bracket of the RB series.

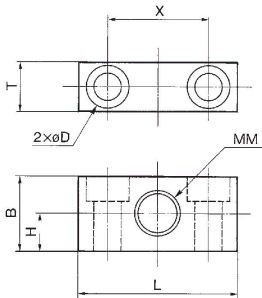
Material: Aluminum alloy
Treatment: Black hard anodized



Part no.	Applicable absorber
RB08-X331	RB□0805, 0806
RB10-X331	RB□1006, 1007
RB14-X331	RB□1411, 1412
RB20-X331	RB□2015
RB27-X331	RB□2725

* Order foot brackets separately.

Dimensions



Part no.	B	D	H	L	MM	T	X	Mounting bolt
RB08-X331	15	4.5 drill, 8 counterbore depth 4.4	7.5	32	M8 x 1.0	10	20	M4
RB10-X331	19	5.5 drill, 9.5 counterbore depth 5.4	9.5	40	M10 x 1.0	12	25	M5
RB14-X331	25	9 drill, 14 counterbore depth 8.6	12.5	54	M14 x 1.5	16	34	M8
RB20-X331	38	11 drill, 17.5 counterbore depth 10.8	19	70	M20 x 1.5	22	44	M10
RB27-X331	50	13.5 drill, 20 counterbore depth 13	25	80	M27 x 1.5	34	52	M12