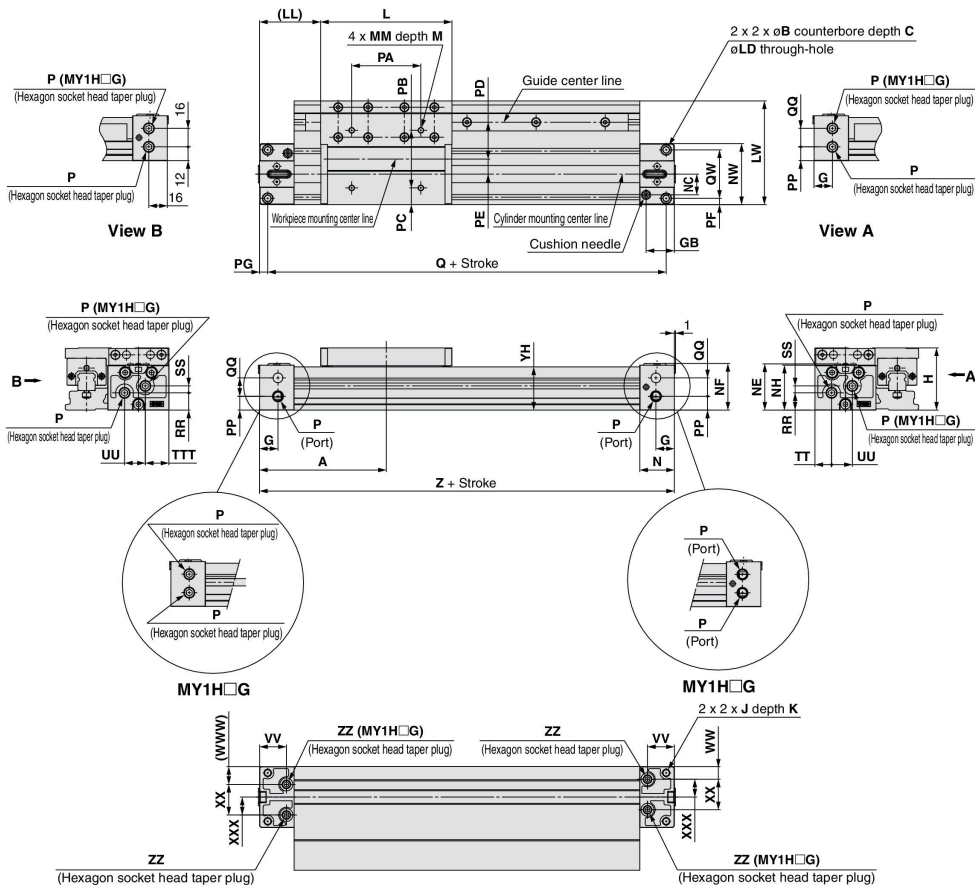


Mechanically Jointed Rodless Cylinder Linear Guide Type **MY1H Series**

Standard Type/Centralized Piping Type

Regarding centralized piping port variations, refer to page 1222.

MY1H25 □ /32 □ /40 □ - Stroke Z



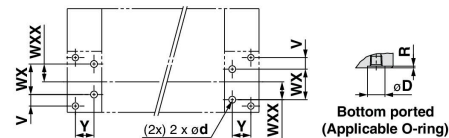
Standard piping/Centralized piping

Model	A	B	C	G	GB	H	J	K	L	LD	LL	LW	M	MM	N	NC	NE	NF	NH	NW	P	PA	PB	PC
MY1H25	110	9	5.5	16	24.5	54	M6 x 1	9.5	114	5.6	53	90	9	M5 x 0.8	30	18	40.2	40.5	39	53	Rc1/8	60	50	14.5
MY1H32	140	11	6.6	19	28.5	68	M8 x 1.25	16	140	6.8	70	110	13	M6 x 1	37	22	50.2	50	49	64	Rc1/8	80	60	15
MY1H40	170	14	8.5	23	35	84	M10 x 1.5	15	170	8.6	85	121	13	M6 x 1	45	26.5	62.7	62	61.5	75	Rc1/4	100	80	20.5

Model	PD	PE	PF	PG	PP	Q	QW	RR	TT	TTT	VV	WW	WWW	XXX	YH	Z	ZZ
MY1H25	32	13	5.5	7	12	206	42	15	14.5	20.5	23.3	11	15.5	15.5	37.5	220	Rc1/16
MY1H32	42	13	6.5	8	16	264	51	16	16	16	28.5	12	12	20	47	280	Rc1/16
MY1H40	37.5	23	8	9	18.5	322	59	23.5	20	20	35	14	14	23.5	59.5	340	Rc1/8

Centralized piping (mm)

Model	QQ	SS	UU	XX
MY1H25	16	6	18	26.5
MY1H32	16	11	32	40
MY1H40	24	12	35	47



* This figure shows the recommended machining dimensions of the mounting surface when viewed from the cylinder side.
* Values inside the parentheses are those for MY1H□G.

Hole Size for Centralized Piping on the Bottom (Machine the mounting side to the dimensions below.)

Standard piping/Centralized piping (mm)						Centralized piping (mm)		
Model	WXX	Y	d	D	R	Model	WX	V
MY1H25	15.5	16.2	6	11.4	1.1	MY1H25	26.5	10
MY1H32	20	20.4	6	11.4	1.1	MY1H32	40	5.5
MY1H40	23.5	25.9	8	13.4	1.1	MY1H40	47	6

MY1B
MY1H
MY1B
MY1M
MY1C
MY1H
MY1HT
MY1W
MY2C
MY2H/HT
MY3A
MY3B
MY3M

D-□
X-□
Technical Data