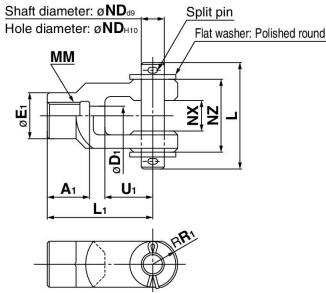


CA2 Series

Dimensions of Accessories

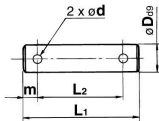
Y Type Double Knuckle Joint



Material: Cast iron													(mm)	
Part no.	Applicable bore size	A1	E1	D1	L1	MM	R1	U1	ND	NX	NZ	L	Split pin size	Flat washer size
Y-04D	40	22	24	10	55	M14 x 1.5	13	25	12	16 ^{+0.3} / _{+0.1}	38	55.5	ø3 x 18 L	Polished round 12
Y-05D	50, 63	27	28	14	60	M18 x 1.5	15	27	12	16 ^{+0.3} / _{+0.1}	38	55.5	ø3 x 18 L	Polished round 12
Y-08D	80	37	36	18	71	M22 x 1.5	19	28	18	28 ^{+0.3} / _{+0.1}	55	76.5	ø4 x 25 L	Polished round 18
Y-10D	100	37	40	21	83	M26 x 1.5	21	38	20	30 ^{+0.3} / _{+0.1}	61	83	ø4 x 30 L	Polished round 20

* A knuckle pin, split pins and flat washers are included.

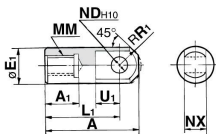
Clevis Pin/Knuckle Pin



Material: Carbon steel													(mm)	
Part no.	Applicable bore size		Dd9	L1	L2	m	d	Included split pin	Included flat washer					
	Clevis	Knuckle												
CDP-2A	40	—	10 ^{-0.040} / _{-0.076}	46	38	4	3	ø3 x 18 L	Polished round 10					
CDP-3A	50	40, 50, 63	12 ^{-0.050} / _{-0.099}	55.5	47.5	4	3	ø3 x 18 L	Polished round 12					
CDP-4A	63	—	16 ^{-0.050} / _{-0.093}	71	61	5	4	ø4 x 25 L	Polished round 16					
CDP-5A	—	80	18 ^{-0.050} / _{-0.093}	76.5	66.5	5	4	ø4 x 25 L	Polished round 18					
CDP-6A	80	100	20 ^{-0.065} / _{-0.117}	83	73	5	4	ø4 x 30 L	Polished round 20					
CDP-7A	100	—	25 ^{-0.065} / _{-0.117}	88	78	5	4	ø4 x 36 L	Polished round 24					

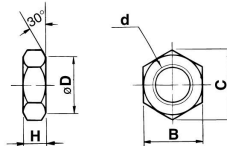
* Split pins and flat washers are included.

I Type Single Knuckle Joint



Material: Free cutting sulfur steel													(mm)	
Part no.	Applicable bore size	A	A1	E1	L1	MM	R1	U1	ND _{H10}	NX				
I-04A	40	69	22	24	55	M14 x 1.5	15.5	20	12 ^{+0.070} / ₀	16 ^{-0.1} / _{-0.3}				
I-05A	50, 63	74	27	28	60	M18 x 1.5	15.5	20	12 ^{+0.070} / ₀	16 ^{-0.1} / _{-0.3}				
I-08A	80	91	37	36	71	M22 x 1.5	22.5	26	18 ^{+0.070} / ₀	28 ^{-0.1} / _{-0.3}				
I-10A	100	105	37	40	83	M26 x 1.5	24.5	28	20 ^{+0.084} / ₀	30 ^{-0.1} / _{-0.3}				

Rod End Nut (Standard)



Material: Rolled steel						(mm)				
Part no.	Applicable bore size	d	H	B	C	D				
							NT-04	40	M14 x 1.5	8
NT-05	50, 63	M18 x 1.5	11	27	31.2	26				
NT-08	80	M22 x 1.5	13	32	37.0	31				
NT-10	100	M26 x 1.5	16	41	47.3	39				

CJ1

CJP

CJ2

JCM

CM2

CM3

CG1

CG3

JMB

MB

MB1

CA2

CS1

CS2

D-□

-X□

Technical Data