

# 3 Port Mechanical Valve: Heavy Duty Type

# VM800 Series



**Sturdy construction.**

**Either N.C. or N.O. is available.**

**Piping possible to any port.**

Proper countermeasures can be taken for applications in which the noise of the exhaust could cause problems to the surroundings.

**Many actuator positions and orientation options.**



## Specifications

Fluid	Air			
Operating pressure	-100 kPa to 1.0 MPa			
Ambient and fluid temperature	-5 to 60°C (No freezing)			
Flow rate characteristics	C [dm <sup>3</sup> /(s·bar)]	b	Cv	
	1 (NC) ↔ 2 (OUT)	1.4	0.2	0.29
	2 (NO) ↔ 3 (OUT)	1.4	0.15	0.29
Lubrication	Not required (Use turbine oil Class 1 ISO VG32, if lubricated.)			
Port size	1/8			

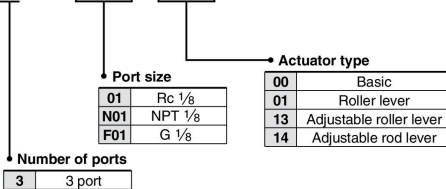
## Model

Actuator	Model	Actuator part no.	Weight (g)
Basic	VM830-01-00	—	180
Roller lever	VM830-01-01	VM-01F	280
Adjustable roller lever	VM830-01-13	VM-13F	300
Adjustable rod lever	VM830-01-14	VM-14F	276

• Actuator replacement is available.

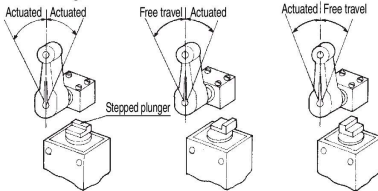
## How to Order

VM830 - 01 - 01

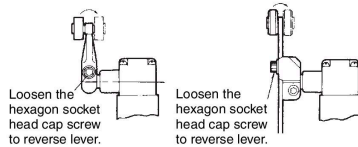


## Application

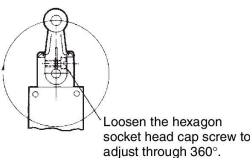
● Movement is changeable.



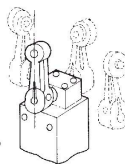
● Roller can be mounted to inside of lever.



● Lever location can be changed.



● Head direction can be changed.



● Lever length adjustment.

