

3 Port Solenoid Valve Direct Operated Poppet Type VT325 Series

Rubber Seal



(Note) CE-compliant: Electorical entry is applicable only for the DIN terminal.

Compact yet provides a large flow capacity

Dimensions (W x H x D)---55 x 118 x 53 (Grommet)

C: 0.61 dm³/(s·bar)
{Rc 3/8 (Passage 2 → 3)}

A single valve with 6 valve functions

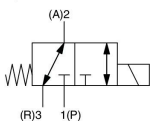
(Universal porting type)
Six valve functions can be attained by selecting the piping ports. (Enabling the N.C. valve, N.O. valve, divider valve, selector valve, etc. to be used as desired.)

Suitable for use in vacuum applications

-101.2 kPa
(For vacuum specifications type: VT/VO325V)



Symbol



How to Order

VT325 - **02** **1** **G** - - -

For manifold:
Enter "VO".

Valve option

NII	Standard
V	For vacuum

Port size

02	1/4
03	3/8
00	Without connection port (For manifold)

Rated voltage

1	100 VAC, 50/60 Hz
2	200 VAC, 50/60 Hz
3	110 VAC, 50/60 Hz
4	220 VAC, 50/60 Hz
5	24 VDC
6	12 VDC
7	240 VAC, 50/60 Hz

Manual override

NII	Non-locking type
M	Locking type (Tool required)

Thread type

NII	Rc
F	G
N	NPT
T	NPTF

Surge voltage suppressor (CE-compliant)

NII	None
S	With surge voltage suppressor

(AC: Can be attached to Grommet, Conduit, Conduit terminal.
DC: Can be attached to Grommet, Conduit, Conduit terminal.)

CE-compliant

NII	—
Q	CE-compliant

* CE-compliant: Electorical entry is applicable only for the DIN terminal.

Electrical entry (CE-compliant)

G	Grommet, Lead wire length 200 mm	—
C	Conduit	—
D	DIN terminal	●
T	Conduit terminal	—
TL	Terminal with indicator light	—
DL	DIN terminal with indicator light	●

Note1) CE-compliant: Electorical entry is applicable only for the DIN terminal.
Note2) For other rated voltages, please consult with SMC.
** For the coil rated voltage (Semi-Standard*), please contact SMC.

Manifold

Model	Applicable manifold	Accessory
VO325-00□□(-Q)	B mount common exhaust type	Gasket (DXT083-13-1) Bolts (DXT083-19-1, 2 pcs.)

Specifications

Type of actuation	Direct operated type 2 position single solenoid
Fluid	Air
Operating pressure range	0 to 1.0 MPa
Ambient and fluid temperature	5 to 50°C
Max. operating frequency	5 Hz
Response time ⁽¹⁾	30 ms or less (at the pressure of 0.5 MPa)
Lubrication	Not required (Use turbine oil Class 1 ISO VG32, if lubricated.)
Manual override	Non-locking push type
Impact/Vibration resistance ⁽²⁾	150/50 m/s ²
Enclosure	Dustproof

Note 1) Based on dynamic performance test, JIS B 8419: 2010. (Coil temperature: 20°C, at rated voltage, without surge suppressor)

Note 2) Impact resistance: No malfunction occurred when it is tested with a drop tester in the axial direction and at the right angles to the main valve and armature in both energized and de-energized states every once for each condition. (Values at the initial period)

Vibration resistance: No malfunction occurred in a one-sweep test between 45 and 1000 Hz. Test was performed at both energized and de-energized states in the axial direction and at the right angles to the main valve and armature. (Values at the initial period)

Solenoid Specifications

Electrical entry	Grommet, Conduit, DIN terminal, Conduit terminal		
Coil rated voltage	100, 200 VAC, 50/60 Hz, 24 VDC		
Allowable voltage fluctuation	-15 to +10% of rated voltage		
Apparent power ⁽³⁾	AC	Inrush	50 Hz: 75 VA 60 Hz: 60 VA
		Holding	50 Hz: 27 VA 60 Hz: 17 VA
			DC

Note 3) At rated voltage

