



Type of actuation

1	2 position single solenoid
2	2 position double solenoid
3	3 position closed center
4	3 position exhaust center
5	3 position pressure center

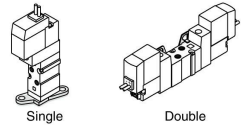
Light/Surge voltage suppressor

Nil	Without light/surge voltage suppressor
S	With surge voltage suppressor
Z	With light/surge voltage suppressor
R	With surge voltage suppressor (Non-polar type)
U	With light/surge voltage suppressor (Non-polar type)

* For AC voltage valves there is no "S" option. It is already built-in to the rectifier circuit.
* For type "R" and "U", DC voltage is only available.
* Power saving circuit is only available in the "Z" type.

Bracket

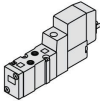
Nil: Without bracket
F: With bracket



* Brackets cannot be retrofitted.

Note) • The double solenoid mounting bracket is supplied unattached.
• To order the double solenoid bracket for use with a single solenoid valve, order the single solenoid valve without a bracket and order the bracket (VJ3000-13-1) separately.
(Example) SYJ3120-5M-M3 VJ3000-13-1

5 port



(Type 20 Manifold)

Rated voltage

DC	CE-compliant	AC (50/60 Hz)	CE-compliant
5	24 VDC ●	1	100 VAC —
6	12 VDC ●	2	200 VAC —
V	6 VDC ●	3	110 VAC [115 VAC] —
S	5 VDC ●	4	220 VAC [230 VAC] —
R	3 VDC ●		

* For type W□, DC voltage is only available.
Note) CE-compliant: For DC only.

Body ported

SYJ3 **1** **2** **0** □ - **5** **M** □ □ - **M3** - □ - □

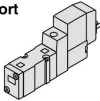
Base mounted (4 port)

SYJ3 **2** **3** **0** □ - **5** **M** □ □ - □ (Manifold use only)

Base mounted (5 port)

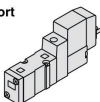
SYJ3 **2** **4** **0** □ - **5** **M** □ □ - □ - □

4 port



(For manifold type 31, S31, 32, S32)

5 port



(For sub-plate, manifold type 41, S41, 46, S46)

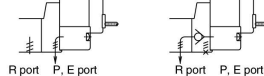
Coil specifications

Nil	Standard
T	With power saving circuit (24, 12 VDC only)

* Power saving circuit is not available in the case of W□ type.

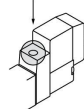
Body option

0: Pilot valve individual exhaust for the pilot valve
3: Common exhaust type for main and pilot valve

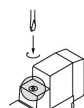


Manual override

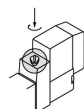
Nil: Non-locking push type



D: Push-turn locking slotted type

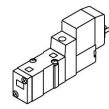


E: Push-turn locking lever type



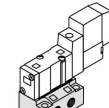
Port size

Nil: Without sub-plate



(With gasket and screws)

M5: With M5 port sub-plate



Electrical entry

24, 12, 6, 5, 3 VDC 100, 110, 200, 220 VAC			24, 12, 6, 5, 3 VDC	
Grommet	L plug connector	M plug connector	M8 connector	
G: Lead wire length 300 mm	L: With lead wire (Length 300 mm)	M: With lead wire (Length 300 mm)	MN: Without lead wire	
H: Lead wire length 600 mm	LN: Without lead wire	LO: Without connector	MO: Without connector	
			W□: With connector cable (Note 1)	

* LN, MN type: with 2 sockets.
* Refer to page 241 for the lead wire length of L and M plug connectors.
* Refer to page 244 for the connector assembly with cover for L and M plug connectors.
* For connector cable of M8 connector, refer to page 244.
* M8 thread conforming to IEC60947-5-2 standard is also available. Refer to page 239 for details.
Note 1) Enter the cable length symbols in □. Please be sure to fill in the blank referring to page 244.

Note) When placing an order for body ported solenoid valve as a single unit, mounting screws for manifold and gasket are not attached. Order them separately, if necessary. (For details, refer to page 168.)