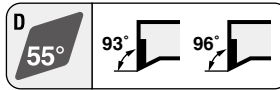
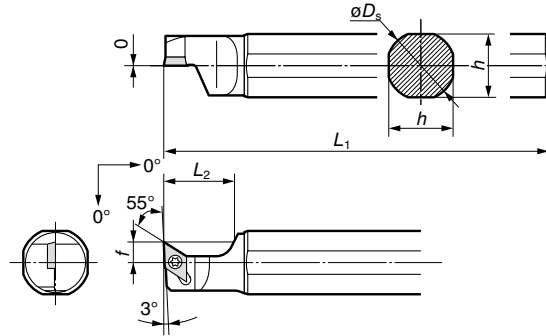
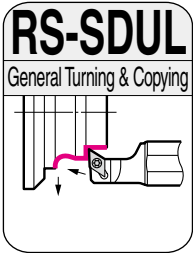


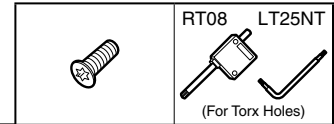
# RS-SDUL/RS-SDXL Type



## General Turning



### Parts

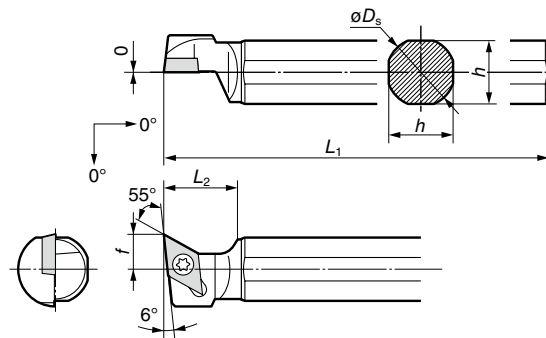
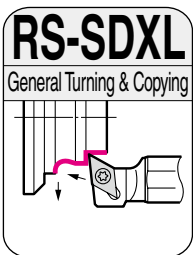


### Holder

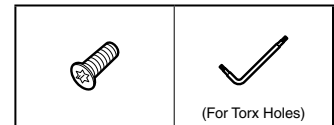
Above figures show left hand tools.

| Cat. No.      | Stock | Dimensions (mm) |     |       |      |       |          | Applicable Insert | Screw  | Wrench |
|---------------|-------|-----------------|-----|-------|------|-------|----------|-------------------|--------|--------|
|               |       | $\phi D_s$      | $h$ | $L_1$ | $f$  | $L_2$ |          |                   |        |        |
| RS14F-SDUL07  | ●     | 14              | 13  | 80    | 6.0  | 20    | DC□□0702 | BFTX02507NT       | RT08   |        |
| RS15H-SDUL07  | ●     | 15.875          | 15  | 100   | 6.0  | 20    |          |                   |        |        |
| RS16F-SDUL07  | ●     | 16              | 15  | 80    | 6.0  | 20    |          |                   |        |        |
| RS16X-SDUL07  | ●     | 16              | 15  | 120   | 6.0  | 20    |          |                   |        |        |
| RS19X-SDUL07  | ●     | 19.05           | 18  | 120   | 6.0  | 20    |          |                   |        |        |
| RS20X-SDUL07S | ●     | 20              | 19  | 95    | 6.0  | 20    |          |                   |        |        |
| RS20X-SDUL07  | ●     | 20              | 19  | 120   | 6.0  | 20    |          |                   |        |        |
| RS22X-SDUL07  | ●     | 22              | 21  | 120   | 6.0  | 20    | DC□□11T3 | BFTX0410NT        | LT25NT |        |
| RS19X-SDUL11  | ●     | 19.05           | 18  | 120   | 10.0 | 20    |          |                   |        |        |
| RS20X-SDUL11S | ●     | 20              | 19  | 95    | 10.0 | 20    |          |                   |        |        |
| RS20X-SDUL11  | ●     | 20              | 19  | 120   | 10.0 | 20    |          |                   |        |        |
| RS22X-SDUL11  | ●     | 22              | 21  | 120   | 10.0 | 20    |          |                   |        |        |
| RS25X-SDUL11  | ●     | 25              | 24  | 120   | 10.0 | 20    |          |                   |        |        |
| RS25M-SDUL11  | ●     | 25.4            | 24  | 150   | 10.0 | 20    |          |                   |        |        |

\* Right handed or neutral handed inserts are applicable. [Insert selection](#) From D20



### Parts



### Holder

Above figures show left hand tools.

| Cat. No.      | Stock | Dimensions (mm) |     |       |      |       |          | Applicable Insert | Screw  | Wrench |
|---------------|-------|-----------------|-----|-------|------|-------|----------|-------------------|--------|--------|
|               |       | $\phi D_s$      | $h$ | $L_1$ | $f$  | $L_2$ |          |                   |        |        |
| RS19X-SDXL11  | ●     | 19.05           | 18  | 120   | 10.0 | 20    | DC□□11T3 | BFTX0410NT        | LT25NT |        |
| RS20X-SDXL11S | ●     | 20              | 19  | 95    | 10.0 | 20    |          |                   |        |        |
| RS20X-SDXL11  | ●     | 20              | 19  | 120   | 10.0 | 20    |          |                   |        |        |
| RS25X-SDXL11  | ●     | 25              | 24  | 120   | 10.0 | 20    |          |                   |        |        |

\* Right handed or neutral handed inserts are applicable. [Insert selection](#) From D20