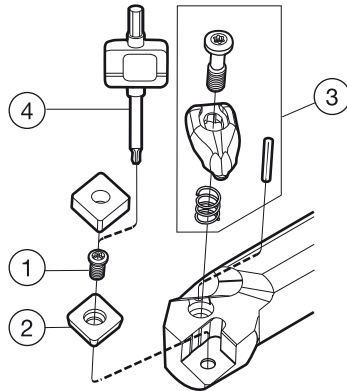


T-Max® P boring bar for turning

Rigid clamp design

**Metric version**

	Spare parts			Included parts
	1	2	3	4
Ordering code	Shim screw	Shim	Clamp set	Key
A25T-DCLNR/L 09	5513 020-04	5322 236-04	5412 028-011	5680 051-03
A25T-DCLNR/L 12	5513 020-02	5322 236-03	5412 028-021	5680 049-01
A32T-DCLNR/L 12	5513 020-02	5322 236-03	5412 028-021	5680 049-01
A40T-DCLNR/L 12	5513 020-02	5322 234-01	5412 028-021	5680 049-01
A50U-DCLNR/L 16	5513 020-07	5322 234-03	5412 028-031	5680 043-14
A25T-DDUNR/L 11	5513 020-04	5322 267-01	5412 028-011	5680 051-03
A32T-DDUNR/L 11	5513 020-04	5322 267-01	5412 028-011	5680 051-03
A40T-DDUNR/L 15	5513 020-02	5322 266-02	5412 028-021	5680 049-01
A50U-DDUNR/L 15	5513 020-02	5322 266-02	5412 028-021	5680 049-01
A25T-DSKNR/L 12	5513 020-02	5322 426-02	5412 028-021	5680 049-01
A25T-DSKNR/L 09	5513 020-04	5322 426-01	5412 028-011	5680 051-03
A32T-DSKNR/L 12	5513 020-02	5322 426-02	5412 028-021	5680 049-01
A40T-DSKNR/L 12	5513 020-02	5322 425-01	5412 028-021	5680 049-01
A25T-DTFNR/L 16	5513 020-04	5322 316-01	5412 028-011	5680 051-03
A32T-DTFNR/L 16	5513 020-04	5322 316-01	5412 028-011	5680 051-03
A40T-DTFNR/L 16	5513 020-04	5322 316-01	5412 028-011	5680 051-03
A40T-DTFNR/L 22	5513 020-02	5322 315-04	5412 028-021	5680 049-01
A50U-DTFNR/L 22	5513 020-02	5322 315-04	5412 028-021	5680 049-01
A40T-DVUNR/L 16	5513 020-09	5322 269-01	5412 028-061	5680 049-01
A25T-DWLNR/L 06	5513 020-04	5322 328-01	5412 028-011	5680 051-03
A25T-DWLNR/L 08	5513 020-02	5322 328-02	5412 028-021	5680 049-01
A32T-DWLNR/L 06	5513 020-04	5322 328-01	5412 028-011	5680 051-03
A32T-DWLNR/L 08	5513 020-02	5322 328-02	5412 028-021	5680 049-01
A40T-DWLNR/L 06	5513 020-04	5322 328-01	5412 028-011	5680 051-03
A40T-DWLNR/L 08	5513 020-02	5322 331-12	5412 028-021	5680 049-01
A50U-DWLNR/L 08	5513 020-02	5322 331-12	5412 028-021	5680 049-01

Keys (mm/Torx Plus) sizes, see page P4

For optional shims, see page A130.

For optional clamp sets, see page A129