

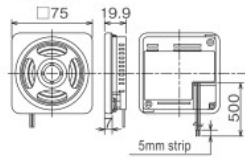
Speaker



SPB-2E-W(Off-white)
2W 8Ω

RoHS 10

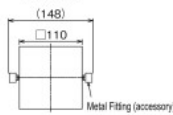
■ Mounting dimensions
(Unit: mm)



SPB-5E(Light Gray)
5W 8Ω

RoHS 10

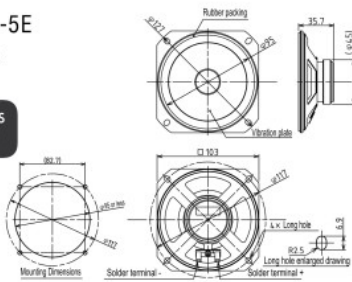
■ Mounting dimensions
(Unit: mm)



SPL-5E
5W 8Ω

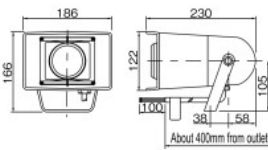
RoHS 10

■ Mounting dimensions
(Unit: mm)



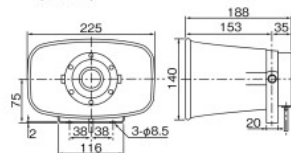
SPW-5E(Light Gray)
5W 8Ω

■ Mounting dimensions
(Unit: mm)



SPH-10EA
10W 8Ω

■ Mounting dimensions
(Unit: mm)



Cable Gland



REL-001

Compatible products
REL / EDLR

RoHS 10

Materials:
Copper alloy, nickel plating

SD Card



SDV-2GP

Compatible products
Various voice annunciator alarms

RoHS 10

Mounting Bracket

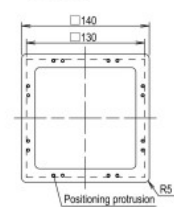


BK-001

Compatible products
BK / BKV / SPB-5E
BK-001
Can be used to install older
products with □130mm mounting
holes.

RoHS 10

■ Mounting dimensions
(Unit: mm)



BK-002-J (Light gray)
BK-002-K (Dark gray)

Compatible products
BK / BKV / SPB-5E

RoHS 10

■ Mounting dimensions
(Unit: mm)

