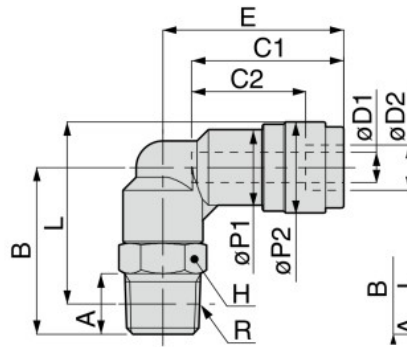


PL Elbow
V-0

RoHS compliant



Metric thread type

Unit : mm

Model code	Tube O.D. øD1	Tube O.D. øD2	R	A	B	L	øP1	øP2	Tube end C1	Tube end C2	E	Hex. H	Orifice bore (ømm)	Weight (g)	CAD file name
PL4-M5V-0	4	6	M5×0.8	2.8	16	19.2	10	12	20	15	22.8	8	2.8	6.2	PL4-M5V-0
PL4-M6V-0			M6×1	3.8	20	22.2					23.8	10		8.8	PL4-M6V-0
PL4-01V-0			R1/8	8	22	24					25.8	14		11	PL4-01V-0
PL4-02V-0			R1/4	11	29	29					25.4	14		19	PL4-02V-0
PL6-01V-0	6	8	R1/8	8	22.5	25.5	12.5	14	22.1	16.5	25.4	10	4.2	12	PL6-01V-0
PL6-02V-0			R1/4	11	28	29					26.9	14	4.3	20	PL6-02V-0
PL6-03V-0			R3/8	12	31.5	32.2					28.9	17	31	PL6-03V-0	
PL8-01V-0	8	10	R1/8	8	24	28	14.5	16	23.3	17.4	27.9	12	6	15	PL8-01V-0
PL8-02V-0			R1/4	11	28	30					28.9	14	6.7	21	PL8-02V-0
PL8-03V-0			R3/8	12	31	32.7					29.9	17	32	PL8-03V-0	
PL10-01V-0	10	12	R1/8	8	25	30.1	17.5	19	25.4	19.5	30.7	12	6	19	PL10-01V-0
PL10-02V-0			R1/4	11	28.5	32					31.2	14	8	25	PL10-02V-0
PL10-03V-0			R3/8	12	32	35.2					32.2	17	8.3	36	PL10-03V-0
PL10-04V-0			R1/2	15	36	37.3					32.7	21	59	PL10-04V-0	
PL12-02V-0	12	14	R1/4	11	29.8	34.8	21	22.2	28.4	23.4	34	14	8	29	PL12-02V-0
PL12-03V-0			R3/8	12	32.5	37.3					34.7	17	10	40	PL12-03V-0
PL12-04V-0			R1/2	15	36.5	39.4					35.7	21	10.3	64	PL12-04V-0

※ 1. "L" is a reference value for height dimension after tightening taper thread.

※ 2. Dimensions after redesign.

FITTING

CONTROLLER

VALVE

TUBE

MAKE-TO-ORDER PRODUCTS

210

Anti-sweater & Brass Series

De Temperature Control

Minimal Series

Stop Fitting Series

Rotary Series

Twist-Proof Fitting

Block and Connector

Coupling

Color Cap