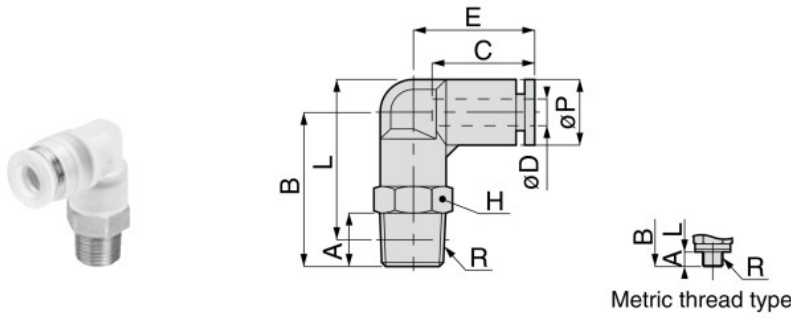


PPL-SUS Elbow
Thread material : SUS304
RoHS compliant



Unit : mm

Model code	Tube O.D. øD	R	A	B	L	øP	Tube end C	E	Hex. H	Weight (g)	Effective area (mm ²)	CAD file name		
PPL4-M5SUS ^{⑤⑥}	4	M5×0.8	3	20.3	22.3	10	15	18.1	10	7	1.5	PPL4-M5SUS		
PPL4-01SUS ^{⑤⑥⑦}		R1/8	8	23.3	24.3					10		PPL4-01SUS		
PPL4-02SUS ^{⑤⑥⑦}		R1/4	11	26.3	25.3					14		PPL4-02SUS		
PPL6-M5SUS ^{⑤⑥}	6	M5×0.8	3	22	25.3	12.5	16.9	19.9	12	11	1.5	PPL6-M5SUS		
PPL6-01SUS ^{⑤⑥⑦}		R1/8	8	25	27.3					12.5		PPL6-01SUS		
PPL6-02SUS ^{⑤⑥⑦}		R1/4	11	28	28.2					14		20	10	PPL6-02SUS
PPL6-03SUS ^{⑤⑥⑦}		R3/8	12	29.8	29.7					17		33	PPL6-03SUS	
PPL8-01SUS ^{⑤⑥⑦}	8	R1/8	8	28	31.3	14.5	18.1	22.7	14	16	16.5	PPL8-01SUS		
PPL8-02SUS ^{⑤⑥⑦}		R1/4	11	31	32.2					14		21.5	PPL8-02SUS	
PPL8-03SUS ^{⑤⑥⑦}		R3/8	12	32.8	33.7					17		35	PPL8-03SUS	
PPL10-02SUS ^{⑤⑥⑦}	10	R1/4	11	36	38.7	17.5	20.4	26.4	17	30.5	30	PPL10-02SUS		
PPL10-03SUS ^{⑤⑥⑦}		R3/8	12	37	39.4					38		PPL10-03SUS		
PPL12-03SUS ^{⑤⑥⑦}	12	R3/8	12	39	43.2	21	23.6	29.6	21	45.5	47	PPL12-03SUS		
PPL12-04SUS ^{⑤⑥⑦}		R1/2	15	42	44.3					60		PPL12-04SUS		

- ※ 1. "L" is a reference value for height dimension after tightening taper thread.
- ※ 2. ⑤ in Model code / Replaced with "F" (FKM), or "N" (NBR) for Seal rubber material change (No code: EPDM)
- ※ 3. ⑥ in Model code / Replaced with "S" for Sealock, or "TP" for Seal tape on thread.
- ※ 4. ⑦ in Model code / Replaced with "C" for Clean-room package

FITTING
 CONTROLLER
 VALVE
 TUBE
 MAKE-TO-ORDER PRODUCTS
 192
 PP Series
 EG Series
 Anti-sweater & Brass Series
 De Temperature Control
 Minimal Series
 Stop Fitting Series
 Rotary Series
 Twist-Proof Fitting
 Block and Connector
 Coupling
 Color Cap