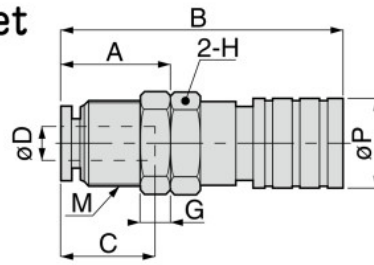


CPSE Bulkhead Tube Socket

RoHS compliant



CAD

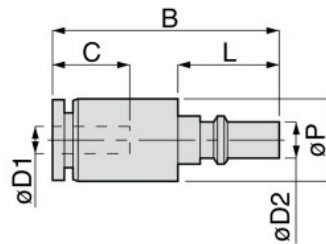
Unit : mm

Model code	Tube O.D. øD	M	A	B	øP	Tube end C	Hex. H	G	Weight (g)	Effective area (mm ²)	CAD file name
CPSE3M-4	4	M9×0.5	10.9	29.7	9.5	10.9	10	3	10	3.3	TFLC-001
CPSE7M-6	6	M12×1	12.4	32.2	11.5	11.7	14	4	18	7.7	

E3 / E7 series Plug

CPPE Straight Tube Plug

RoHS compliant



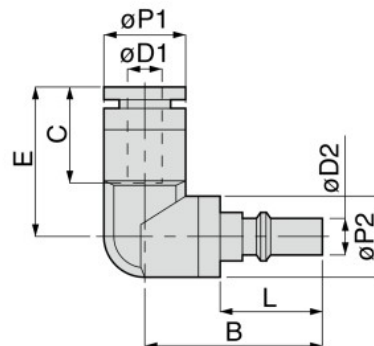
CAD

Unit : mm

Model code	Tube O.D. øD1	øD2	B	L	øP	Tube end C	Weight (g)	Effective area (mm ²)	CAD file name
CPPE3-4	4	3.5	21.1	9.2	8	10.9	4	4.2	TFLC-002
CPPE7-6	6	5.4	22.6	9.9	10	11.7	5	11.4	

CPPE Elbow Tube Plug

RoHS compliant



CAD

Unit : mm

Model code	Tube O.D. øD1	øD2	B	L	øP1	øP2	Tube end C	E	Weight (g)	Effective area (mm ²)	CAD file name
CPPE3L-4	4	3.5	16.2	9.2	8	8	11	15	4	3.5	TFLC-002
CPPE7L-6	6	5.4	19.1	9.9	10.5	10	11.6	16.4	6	8.8	