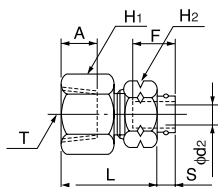


Internal connector

●Millimeter size type (Group 4)



Product number	Applicable tube outer diameter, inner diameter (mm)	T Thread size (Rc)	L (mm)	A (mm)	S (mm)	F Tube insertion length (mm)	H ₁ Width across flat (mm)	H ₂ Width across flat (mm)	d ₂ Min. inner diameter (mm)	Effective cross-sectional area (mm ²)	Weight (g)
FC4N4x2-PT1/8	4x2	Rc1/8	25.0	8.7	4.7	15	14.0	10.0	0.9	0.5	18.0
FC4N4x3-PT1/8	4x3	Rc1/8	25.0	8.7	4.7	15	14.0	10.0	2.0	3.0	18.0
FC4N6x4-PT1/8	6x4	Rc1/8	25.0	8.7	4.6	15	14.0	12.0	2.7	5.0	20.0
FC4N6x4-PT1/4	6x4	Rc1/4	29.0	13.0	4.6	15	17.0	12.0	2.7	5.0	29.0
FC4N6x4-PT3/8	6x4	Rc3/8	30.0	13.5	4.6	15	22.0	12.0	2.7	5.0	43.0
FC4N6x4.5-PT1/8	6x4.5	Rc1/8	25.0	8.7	4.6	15	14.0	12.0	3.2	7.5	20.0
FC4N6x4.5-PT1/4	6x4.5	Rc1/4	29.0	13.0	4.6	15	17.0	12.0	3.2	7.5	29.0
FC4N8x6-PT1/8	8x6	Rc1/8	24.9	8.7	4.6	16	14.0	14.0	4.7	16.0	22.0
FC4N8x6-PT1/4	8x6	Rc1/4	28.9	13.0	4.6	16	17.0	14.0	4.7	16.0	31.0
FC4N8x6-PT3/8	8x6	Rc3/8	29.9	13.5	4.6	16	22.0	14.0	4.7	16.0	48.0
FC4N10x7.5-PT1/4	10x7.5	Rc1/4	30.1	13.0	4.2	17	17.0	17.0	6.2	30.0	35.0
FC4N10x7.5-PT3/8	10x7.5	Rc3/8	31.1	13.5	4.2	17	22.0	17.0	6.2	30.0	51.0
FC4N10x7.5-PT1/2	10x7.5	Rc1/2	35.1	17.5	4.2	17	24.0	17.0	6.2	30.0	59.0
FC4N10x8-PT1/4	10x8	Rc1/4	30.1	13.0	4.2	17	17.0	17.0	6.7	32.0	35.0
FC4N10x8-PT3/8	10x8	Rc3/8	31.1	13.5	4.2	17	22.0	17.0	6.7	32.0	51.0
FC4N10x8-PT1/2	10x8	Rc1/2	35.1	17.5	4.2	17	24.0	17.0	6.7	32.0	58.0
FC4N12x9-PT3/8	12x9	Rc3/8	31.6	13.5	4.8	18	22.0	19.0	7.6	40.0	55.0
FC4N12x9-PT1/2	12x9	Rc1/2	35.6	17.5	4.8	18	24.0	19.0	7.6	40.0	62.0

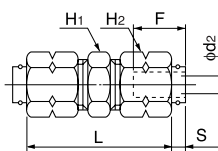
*Made to order

●Inch size type (Group 1)

Product number	Applicable tube outer diameter (inch)	T Thread size (Rc)	L (mm)	A (mm)	S (mm)	F Tube insertion length (mm)	H ₁ Width across flat (mm)	H ₂ Width across flat (mm)	d ₂ Min. inner diameter (mm)	Effective cross-sectional area (mm ²)	Weight (g)
FC1N3/16-PT1/8	3/16	Rc1/8	25.1	8.7	4.6	15	14.0	10.0	2.4	4.0	17.0
FC1N1/4-PT1/8	1/4	Rc1/8	25.0	8.7	4.6	15	14.0	12.0	3.4	8.5	19.0
FC1N1/4-PT1/4	1/4	Rc1/4	29.0	13.0	4.6	15	17.0	12.0	3.4	8.5	29.0
FC1N5/16-PT1/8	5/16	Rc1/8	24.8	8.7	4.6	16	14.0	14.0	4.7	16.0	22.0
FC1N5/16-PT1/4	5/16	Rc1/4	28.8	13.0	4.6	16	17.0	14.0	4.7	16.0	30.0
FC1N5/16-PT3/8	5/16	Rc3/8	29.8	13.5	4.6	16	22.0	14.0	4.7	16.0	45.0
FC1N3/8-PT1/4	3/8	Rc1/4	29.7	13.0	4.6	17	17.0	17.0	5.7	22.5	35.0
FC1N3/8-PT3/8	3/8	Rc3/8	30.7	13.5	4.6	17	22.0	17.0	5.7	22.5	52.0
FC1N3/8-PT1/2	3/8	Rc1/2	34.7	17.5	4.6	17	24.0	17.0	5.7	22.5	60.0
FC1N1/2-PT3/8	1/2	Rc3/8	31.8	13.5	4.6	18	22.0	19.0	8.2	45.0	54.0
FC1N1/2-PT1/2	1/2	Rc1/2	35.8	17.5	4.6	18	24.0	19.0	8.2	45.0	61.0

Union connector

●Millimeter size type (Group 4)



Product number	Applicable tube outer diameter (mm)	L (mm)	S (mm)	F Tube insertion length (mm)	H ₁ Width across flat (mm)	H ₂ Width across flat (mm)	d ₂ Min. inner diameter (mm)	Effective cross-sectional area (mm ²)	Weight (g)
UC4N4x2	4x2	32.9	4.7	15	10.0	10.0	0.9	0.5	16.0
UC4N4x2.5	4x2.5	32.9	4.7	15	10.0	10.0	1.3	1.5	16.0
UC4N4x3	4x3	32.9	4.7	15	10.0	10.0	2.0	3.0	16.0
UC4N6x4	6x4	33.0	4.6	15	10.0	12.0	2.7	5.0	20.0
UC4N6x4.5	6x4.5	33.0	4.6	15	10.0	12.0	3.2	7.5	20.0
UC4N8x5	8x5	32.8	4.6	16	12.0	14.0	3.7	10.0	28.0
UC4N8x6	8x6	32.8	4.6	16	12.0	14.0	4.7	16.0	25.0
UC4N10x6.5	10x6.5	36.2	4.2	17	17.0	17.0	5.2	20.5	44.0
UC4N10x7.5	10x7.5	36.2	4.2	17	17.0	17.0	6.2	30.0	45.0
UC4N10x8	10x8	36.2	4.2	17	17.0	17.0	6.7	32.0	44.0
UC4N12x8	12x8	37.3	4.8	18	17.0	19.0	6.6	32.0	49.0
UC4N12x9	12x9	37.3	4.8	18	17.0	19.0	7.6	40.0	51.0

●Inch size type (Group 1)

Product number	Applicable tube outer diameter (inch)	L (mm)	S (mm)	F Tube insertion length (mm)	H ₁ Width across flat (mm)	H ₂ Width across flat (mm)	d ₂ Min. inner diameter (mm)	Effective cross-sectional area (mm ²)	Weight (g)
UC1N1/8	1/8	33.1	4.6	15	10.0	8.0	1.4	1.5	13.0
UC1N3/16	3/16	33.1	4.6	15	10.0	10.0	2.4	4.0	16.0
UC1N1/4	1/4	33.1	4.6	15	10.0	12.0	3.4	8.5	20.0
UC1N5/16	5/16	32.7	4.6	16	12.0	14.0	4.7	16.0	25.0
UC1N3/8	3/8	35.4	4.6	17	14.0	17.0	5.7	22.5	40.0
UC1N1/2	1/2	37.6	4.6	18	17.0	19.0	8.2	45.0	47.0